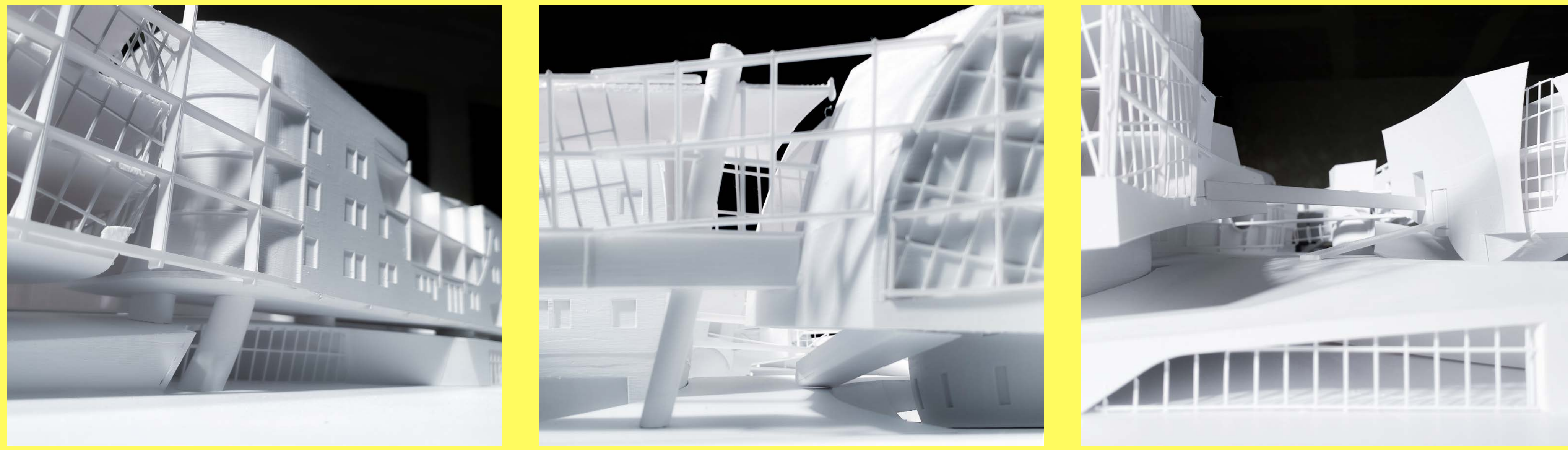
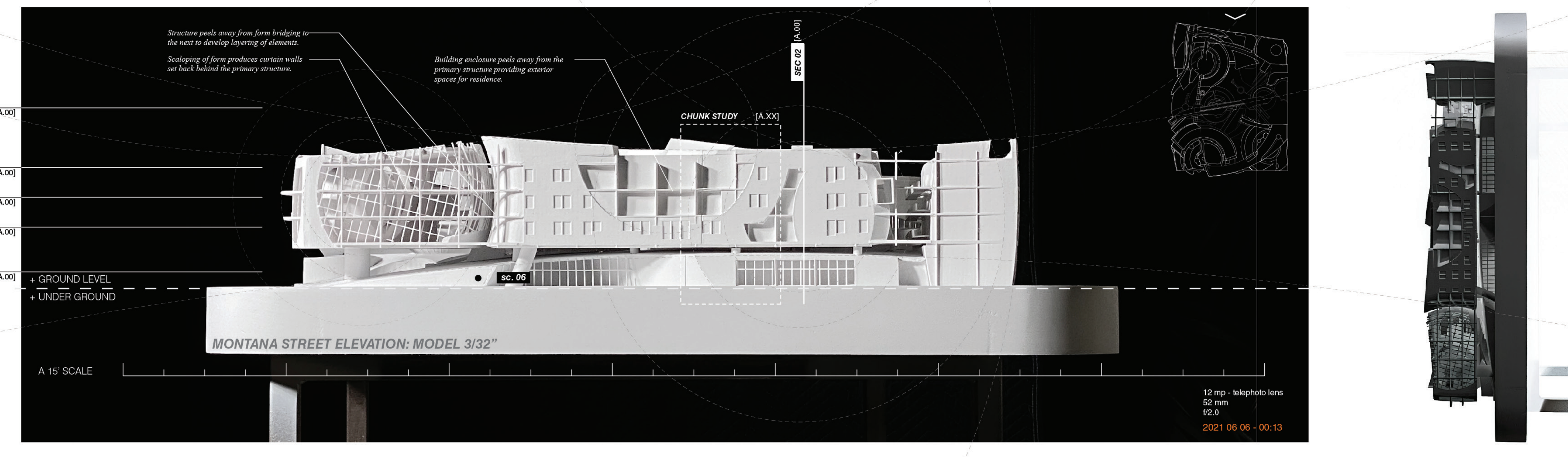
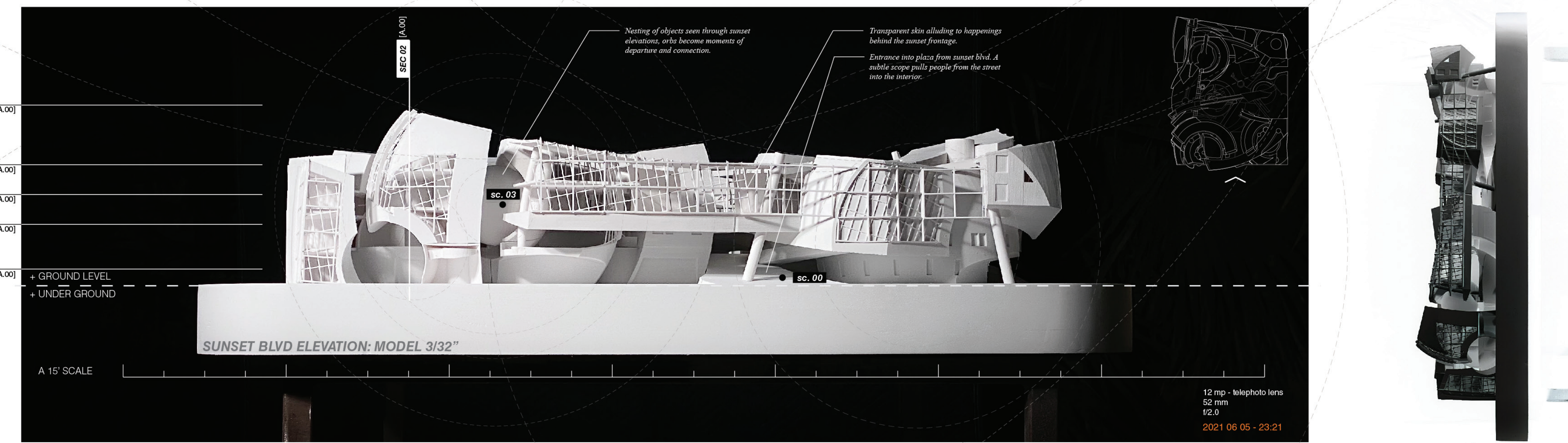
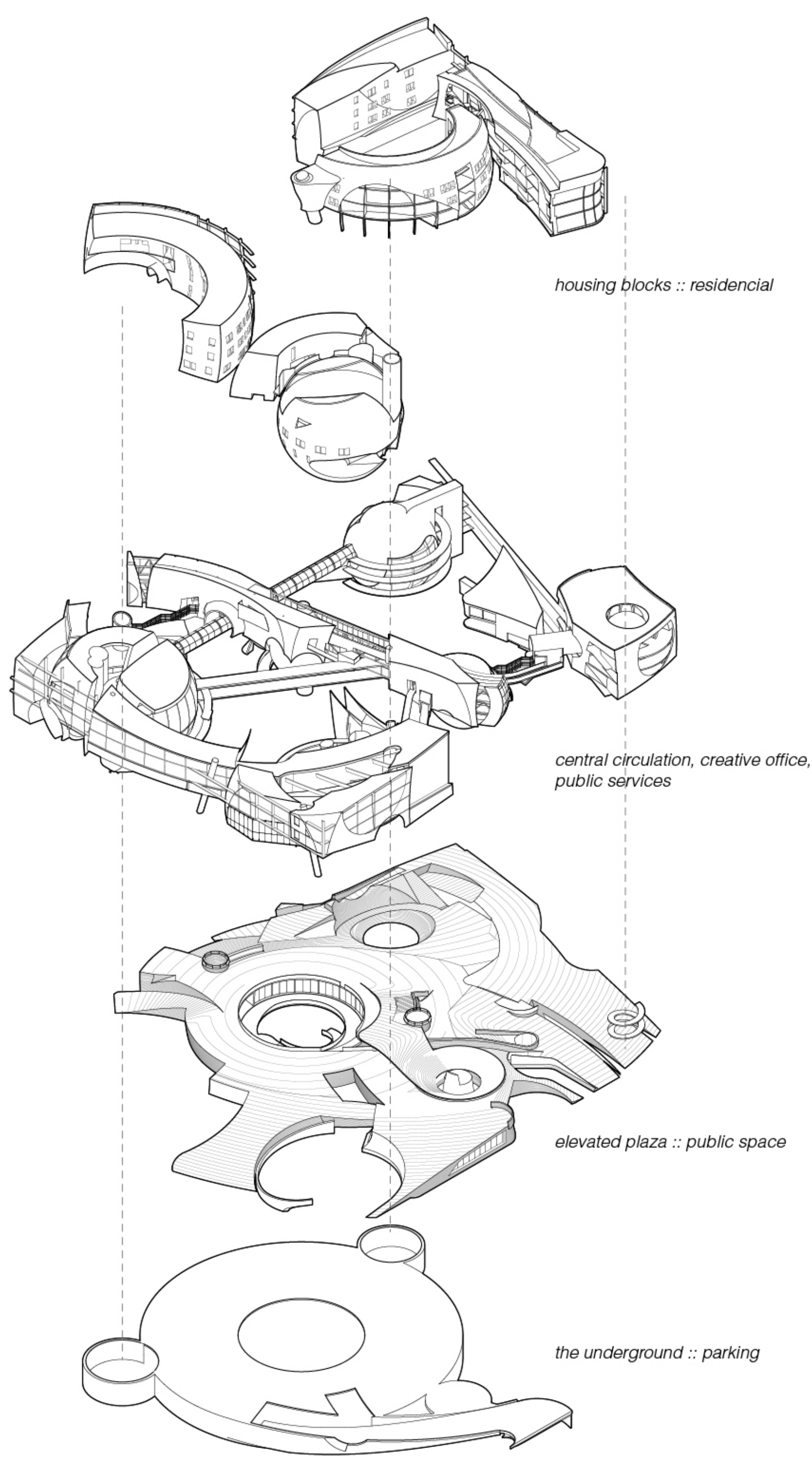


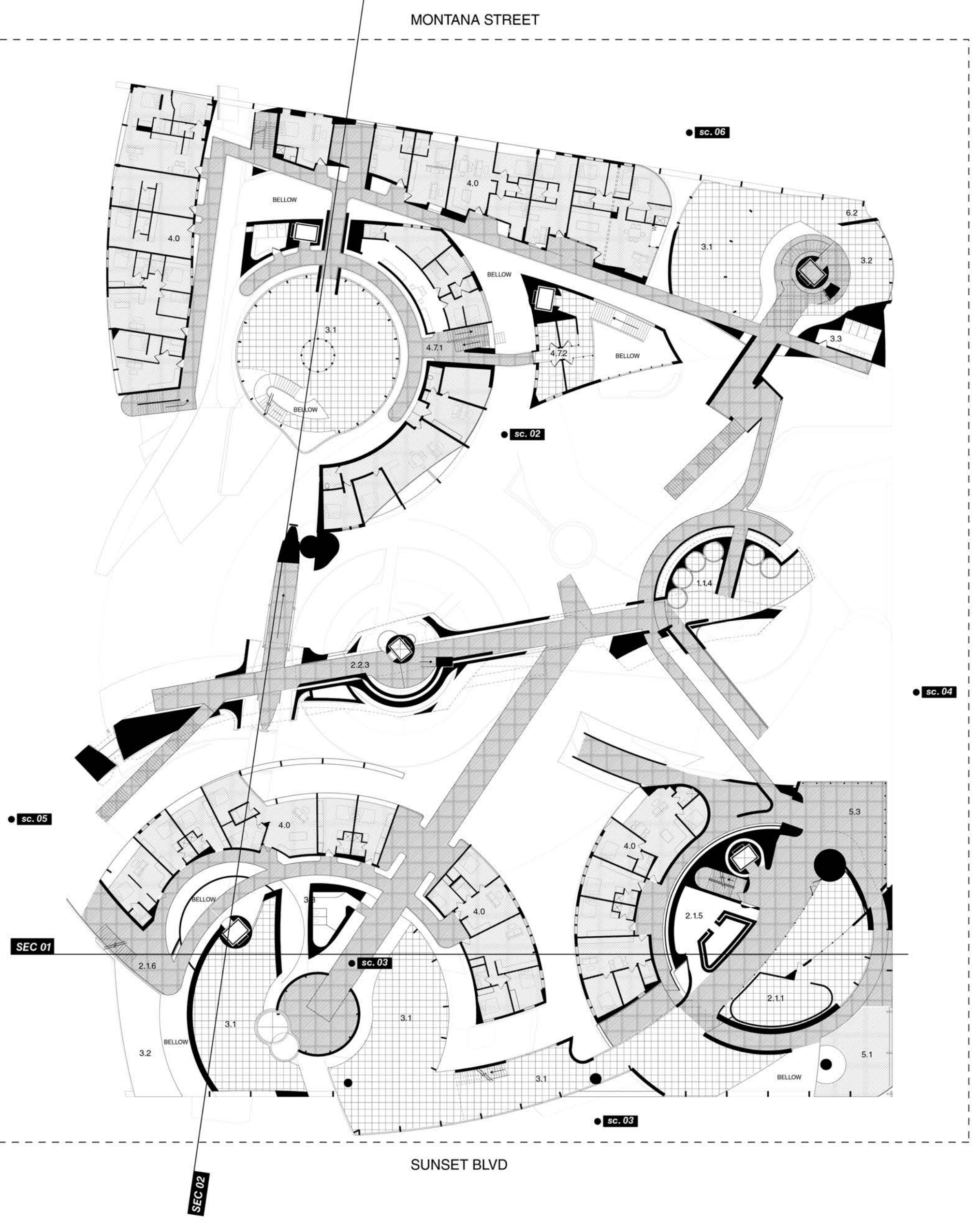
FRAGMENTED NESTING

Elliot Robinson
 STUDIO YEAR: 2021
 PROJECT SIZE: 210,000 SF
 LOCATION: SUNSET BLVD, ECHO PARK
 PROGRAM: MIXED USE: HOUSING, PUBLIC SERVICES, OFFICE, HOTEL, RETAIL



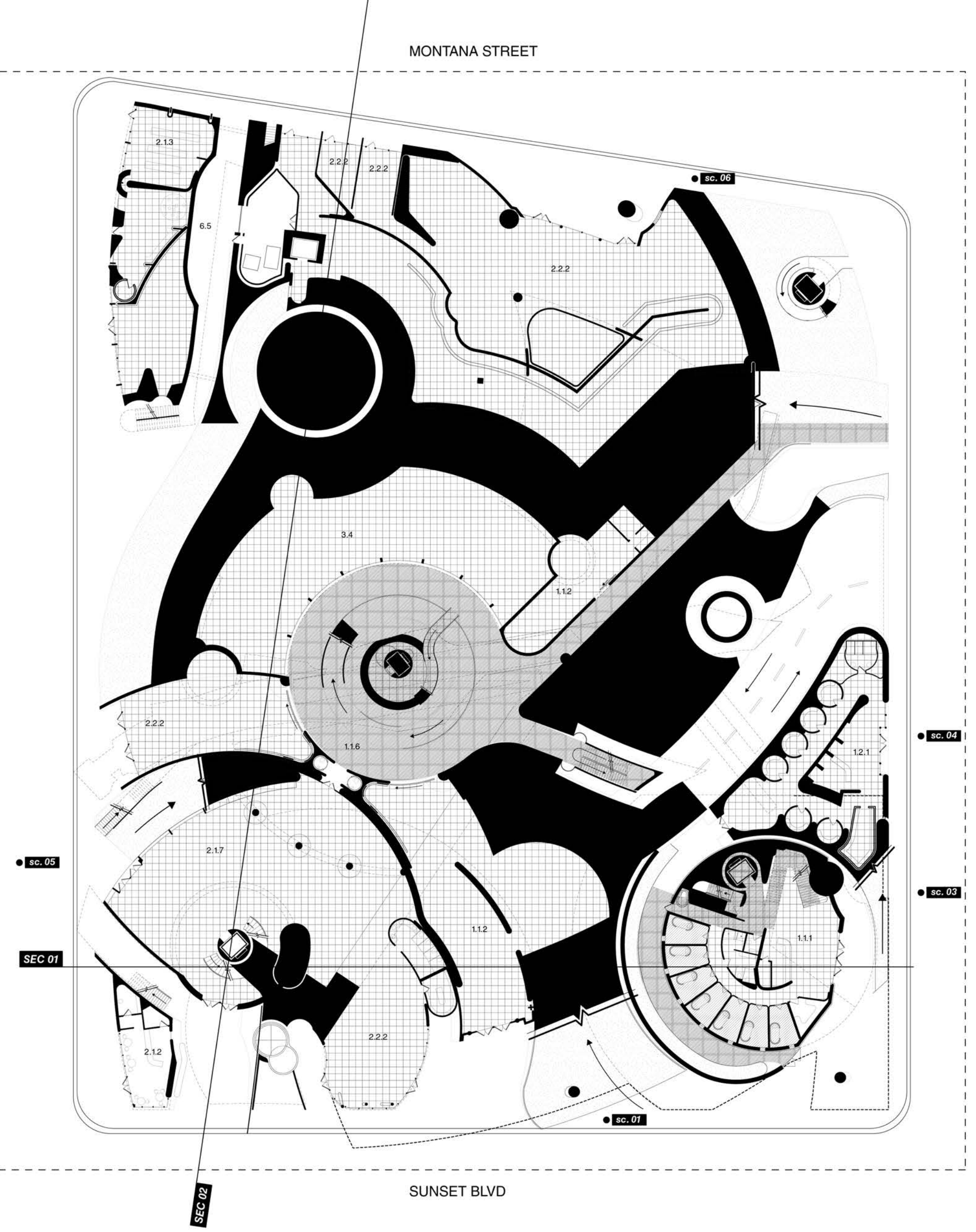
PLAN 03
 The third level shows the expansive circulation network at its highest densities, as it punctures exterior shells into central work zones, and through housing blocks creating interstitial zones of human interaction. Here the central bar holds programs helping to facilitate interaction.

- PROGRAM GUIDE**
- 1.0 Visitors and Services
 - 1.1 Visitors
 - 1.1.1 Lobby + Information Hub
 - 1.1.2 Exhibition Hall
 - 1.1.3 Exterior Amphitheatre
 - 1.1.4 Public Bath House
 - 1.1.5 Meeting Hall
 - 1.1.6 Public Restrooms
 - 1.1.7 Education Perch
 - 1.1.8 Flex Space
 - 1.2 Services
 - 1.2.1 Health Clinic + Pharmacy
 - 1.2.2 Public Services
 - 1.2.3 Public Support Spaces
 - 1.2.4 Daycare
 - 1.2.5 Social Services
 - 2.0 Consumerism and Leisure
 - 2.1 Leisure + Nutrients
 - 2.1.1 Restaurant
 - 2.1.2 Sunset Cafe
 - 2.1.3 The Corner Store
 - 2.1.4 The Cafeteria
 - 2.1.5 Rooftop Spa
 - 2.1.6 Star Talk
 - 2.1.7 Grocery
 - 2.2 Consumerism
 - 2.2.1 Gift Shop
 - 2.2.2 Kinetic Retail
 - 2.2.3 Mail Room
 - 3.0 Office
 - 3.1 Flexible Open Office
 - 3.2 Meeting Rooms
 - 3.3 Restrooms
 - 3.4 Non-Flexible Creative Office Studios
 - 3.5 Office Kitchen
 - 3.6 Isolation Pods
 - 3.7 Office Storage
 - 4.0 Residential
 - 4.1 Micro Housing
 - 4.2 Studio Apartment
 - 4.3 One Bedroom
 - 4.4 Two Bedroom
 - 4.5 Three Bedroom
 - 4.6 Public Laundry MATT
 - 4.7 Transient Family Housing
 - 4.7.2 Transient Family Communal Space
 - 5.0 Hotel
 - 5.1 Boutique Hotel
 - 5.2 Transient Hotel
 - 5.3 Event Hall
 - 6.0 Logistics
 - 6.1 Loading and Unloading Zone
 - 6.2 Custodial Storage*
 - 6.3 Parking Garage
 - 6.4 Residence Storage
 - 6.5 Loading Bay
 - 6.6 Mechanical Rooms*

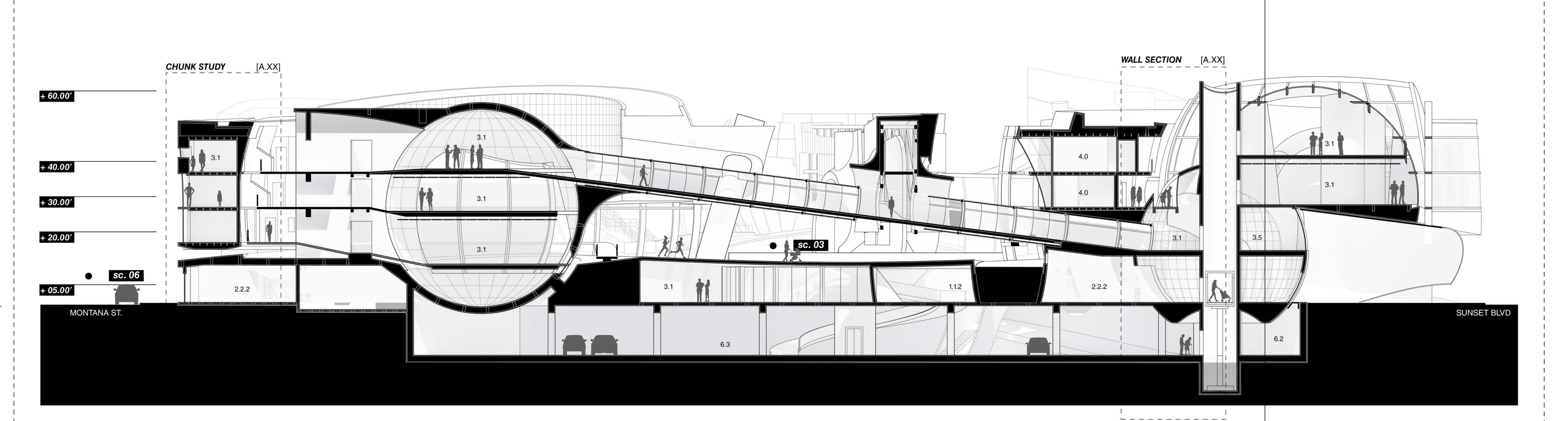


PLAN 01
 The first level plan had a strong relationship to the street. Businesses and retail outlets are located around the perimeter of the site allowing for easy access by pedestrians. Towards the center some areas become unoccupiable under the plaza but opening up to the central circulation and an office space.

- PROGRAM GUIDE**
- 1.0 Visitors and Services
 - 1.1 Visitors
 - 1.1.1 Lobby + Information Hub
 - 1.1.2 Exhibition Hall
 - 1.1.3 Exterior Amphitheatre
 - 1.1.4 Public Bath House
 - 1.1.5 Meeting Hall
 - 1.1.6 Public Restrooms
 - 1.1.7 Education Perch
 - 1.1.8 Flex Space
 - 1.2 Services
 - 1.2.1 Health Clinic + Pharmacy
 - 1.2.2 Public Services
 - 1.2.3 Public Support Spaces
 - 1.2.4 Daycare
 - 1.2.5 Social Services
 - 2.0 Consumerism and Leisure
 - 2.1 Leisure + Nutrients
 - 2.1.1 Restaurant
 - 2.1.2 Sunset Cafe
 - 2.1.3 The Corner Store
 - 2.1.4 The Cafeteria
 - 2.1.5 Rooftop Spa
 - 2.1.6 Star Talk
 - 2.1.7 Grocery
 - 2.2 Consumerism
 - 2.2.1 Gift Shop
 - 2.2.2 Kinetic Retail
 - 2.2.3 Mail Room
 - 3.0 Office
 - 3.1 Flexible Open Office
 - 3.2 Meeting Rooms
 - 3.3 Restrooms
 - 3.4 Non-Flexible Creative Office Studios
 - 3.5 Office Kitchen
 - 3.6 Isolation Pods
 - 3.7 Office Storage
 - 4.0 Residential
 - 4.1 Micro Housing
 - 4.2 Studio Apartment
 - 4.3 One Bedroom
 - 4.4 Two Bedroom
 - 4.5 Three Bedroom
 - 4.6 Public Laundry MATT
 - 4.7 Transient Family Housing
 - 4.7.2 Transient Family Communal Space
 - 5.0 Hotel
 - 5.1 Boutique Hotel
 - 5.2 Transient Hotel
 - 5.3 Event Hall
 - 6.0 Logistics
 - 6.1 Loading and Unloading Zone
 - 6.2 Custodial Storage*
 - 6.3 Parking Garage
 - 6.4 Residence Storage
 - 6.5 Loading Bay
 - 6.6 Mechanical Rooms*



NW Section 02 - Creative Office Connections



- PROGRAM GUIDE**
- | 1.0 Visitors and Services | 1.1 Visitors | 1.2 Services | 2.0 Consumerism and Leisure | 2.1 Leisure + Nutrients | 2.2 Consumerism | 3.0 Office | 4.0 Residential | 5.0 Hotel | 6.0 Logistics | | | | | | | | | | | | | | | | | | | | | | | | | | | | | | | | | | | | | | |
|-------------------------------|-----------------------|-----------------------------|-----------------------------|-------------------------|------------------------|-----------------------|------------------|--------------------------------|-----------------------|-----------------------------|---------------|-----------------------|------------------|-------------------|------------------------|---------------------|-------------------|-----------------|---------------|-----------------|----------------------|-----------------|--------------------------|-------------------|---------------|--|--------------------|--------------------|--------------------|-------------------|----------------------|-----------------|-----------------|-------------------|-------------------------|--------------------------------|---------------------------------------|--------------------|---------------------|----------------|-------------------------|--------------------------------|------------------------|--------------------|-----------------------|-----------------|-----------------------|
| 1.1.1 Lobby + Information Hub | 1.1.2 Exhibition Hall | 1.1.3 Exterior Amphitheatre | 1.1.4 Public Bath House | 1.1.5 Meeting Hall | 1.1.6 Public Restrooms | 1.1.7 Education Perch | 1.1.8 Flex Space | 1.2.1 Health Clinic + Pharmacy | 1.2.2 Public Services | 1.2.3 Public Support Spaces | 1.2.4 Daycare | 1.2.5 Social Services | 2.1.1 Restaurant | 2.1.2 Sunset Cafe | 2.1.3 The Corner Store | 2.1.4 The Cafeteria | 2.1.5 Rooftop Spa | 2.1.6 Star Talk | 2.1.7 Grocery | 2.2.1 Gift Shop | 2.2.2 Kinetic Retail | 2.2.3 Mail Room | 3.1 Flexible Open Office | 3.2 Meeting Rooms | 3.3 Restrooms | 3.4 Non-Flexible Creative Office Studios | 3.5 Office Kitchen | 3.6 Isolation Pods | 3.7 Office Storage | 4.1 Micro Housing | 4.2 Studio Apartment | 4.3 One Bedroom | 4.4 Two Bedroom | 4.5 Three Bedroom | 4.6 Public Laundry MATT | 4.7.1 Transient Family Housing | 4.7.2 Transient Family Communal Space | 5.1 Boutique Hotel | 5.2 Transient Hotel | 5.3 Event Hall | 5.4 Transient Courtyard | 6.1 Loading and Unloading Zone | 6.2 Custodial Storage* | 6.3 Parking Garage | 6.4 Residence Storage | 6.5 Loading Bay | 6.6 Mechanical Rooms* |

