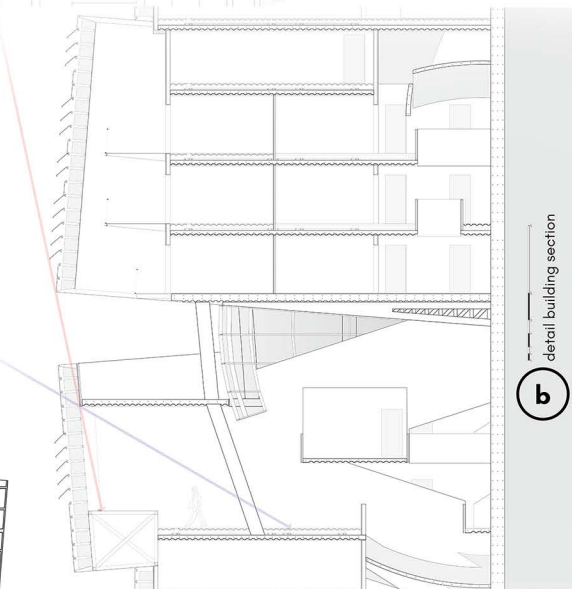
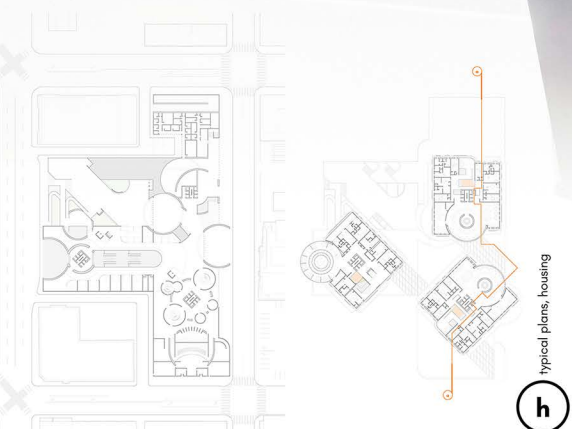
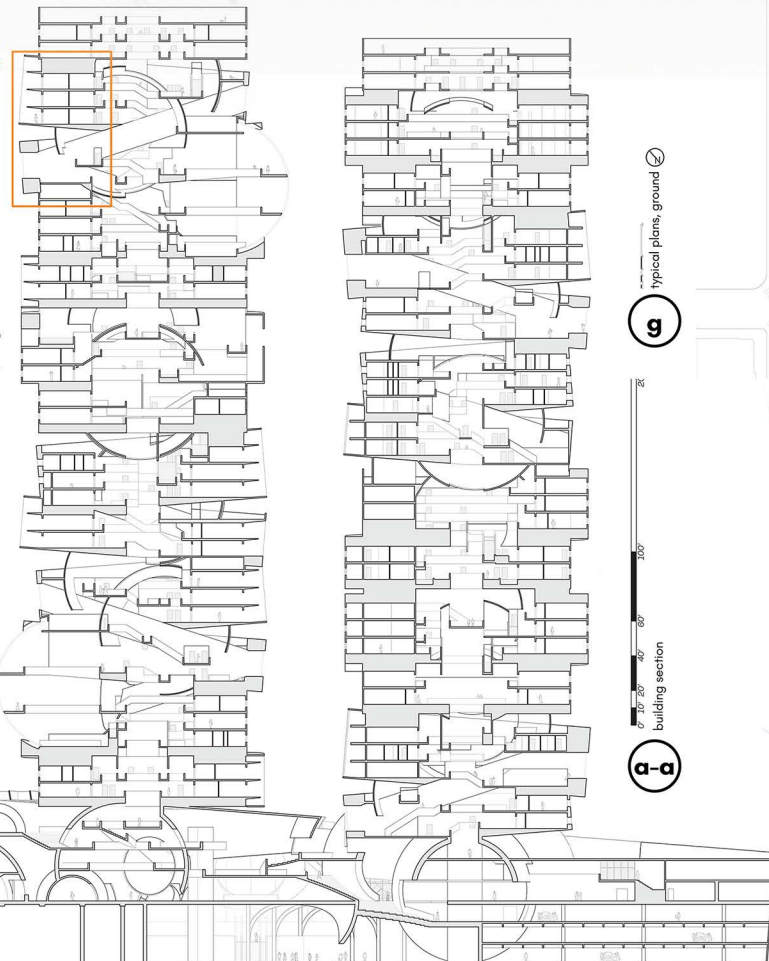
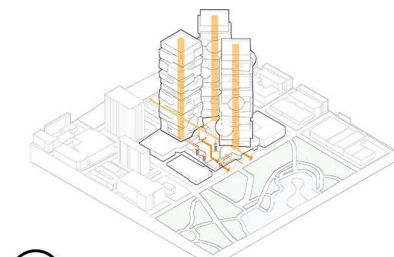
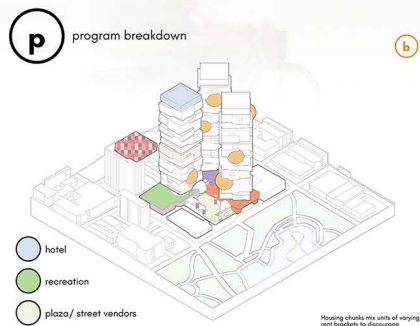
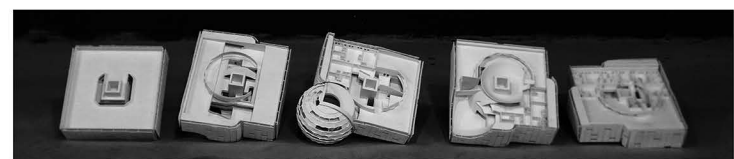
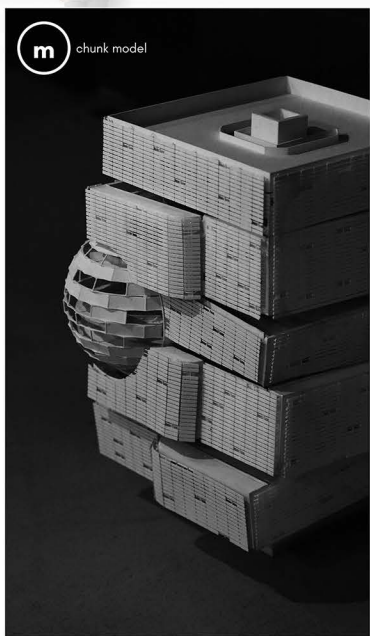
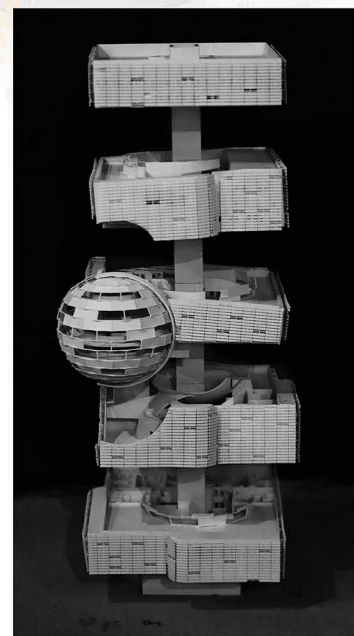


Spheres of Influence

As the housing crisis in Los Angeles is exacerbated, disparities between the quality and image of housing designed for citizens in need versus those who are financially secure must be minimized. To abolish the negative image of affordable housing and create a more equitable housing solution for people in need, "Spheres of Influence" organizes units not by wealth bracket but by lifestyle and interests, resulting in social circles of people with hugely varying social and economic backgrounds but similar interests. By putting emphasis on these features, the stigma of "affordable housing" is dismantled and replaced by mutual respect and opportunity for community engagement between residents.



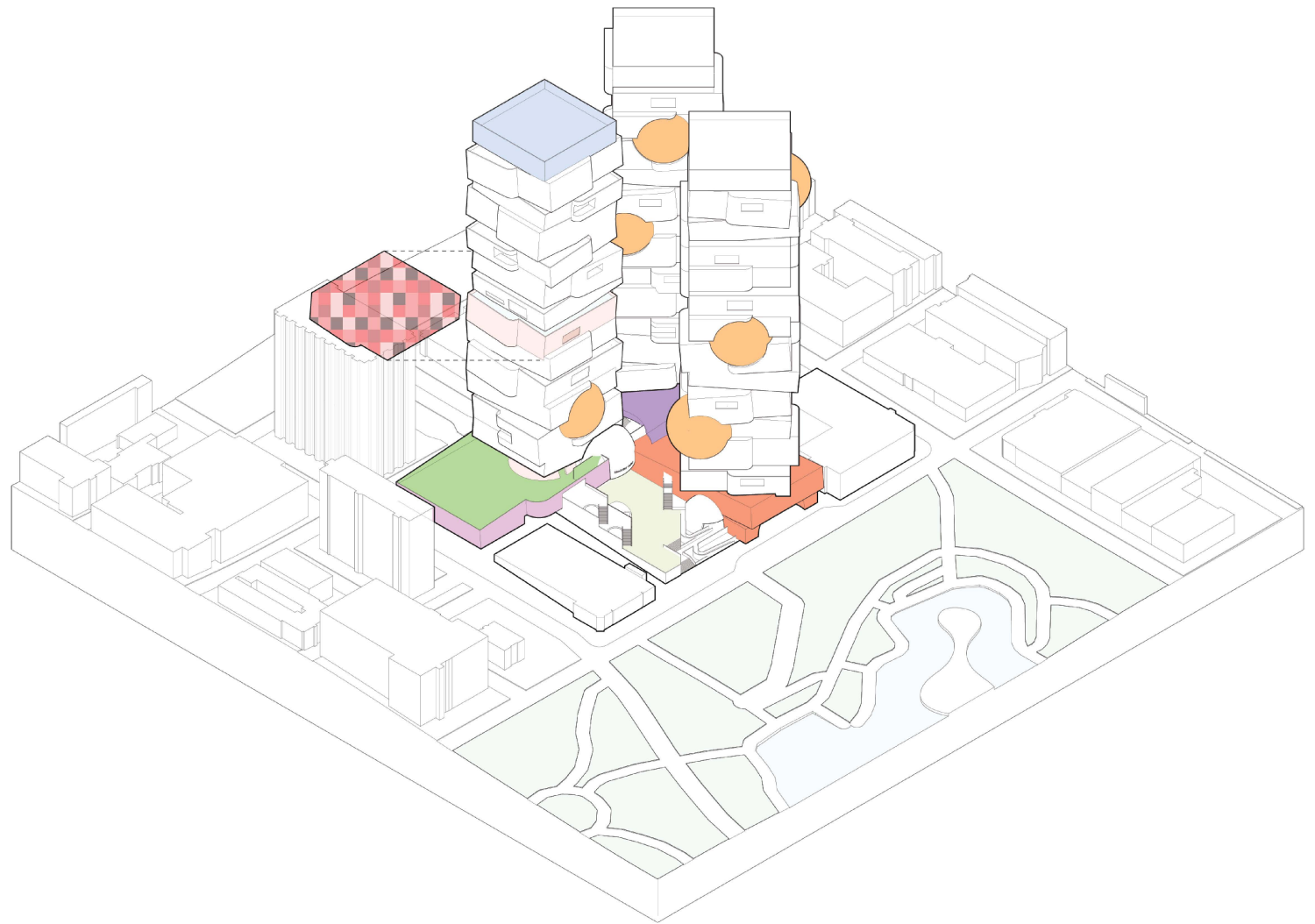
Spheres of Influence



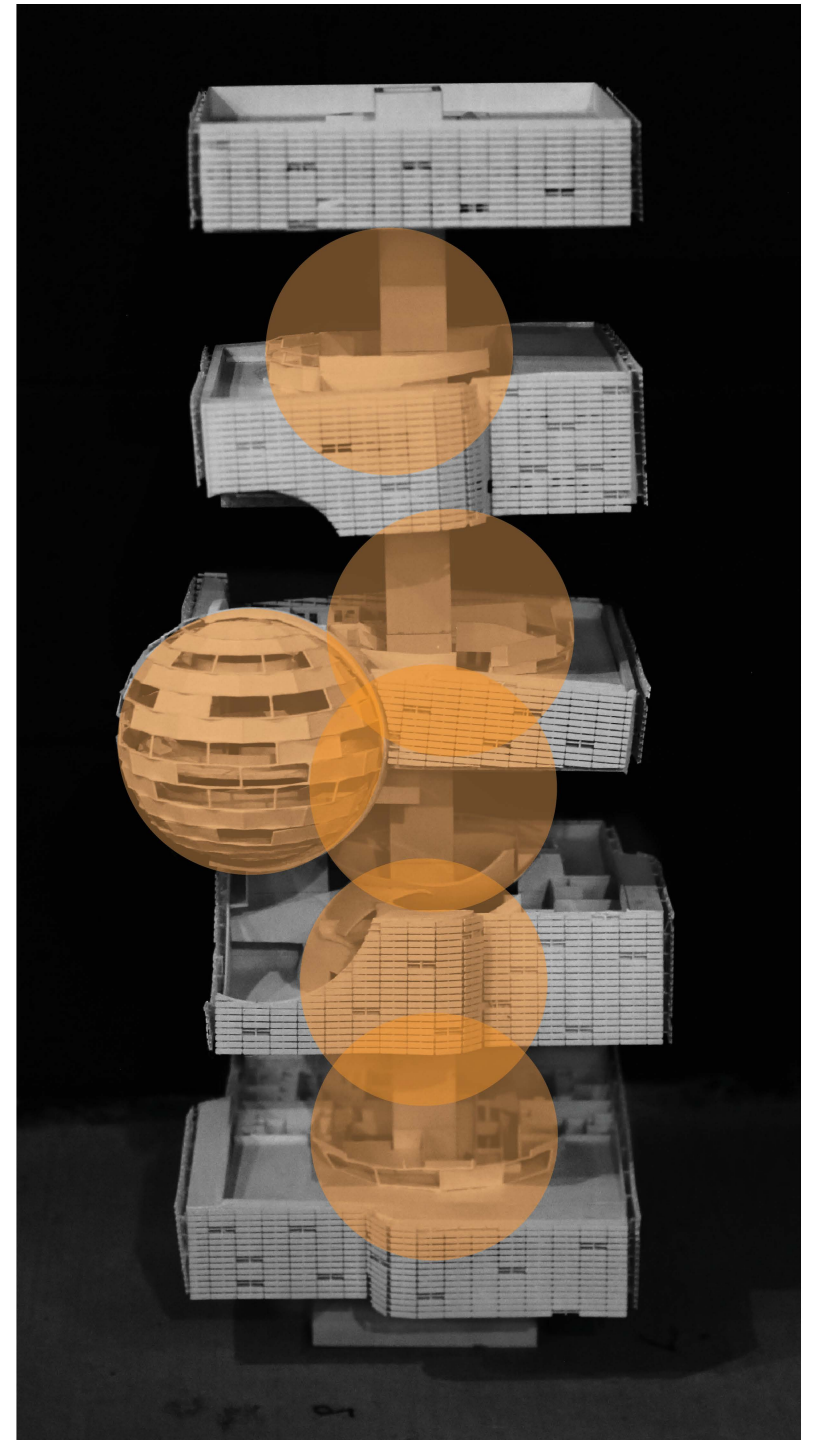
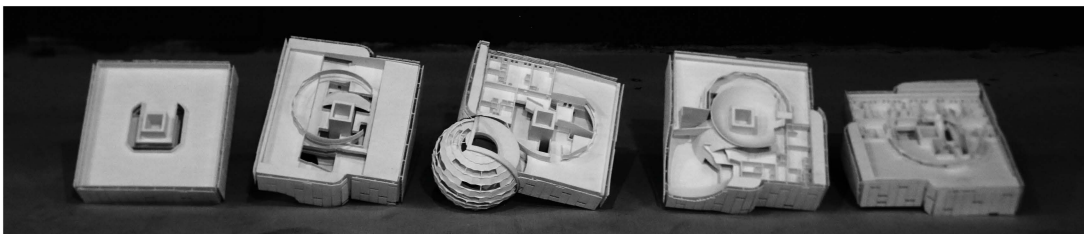
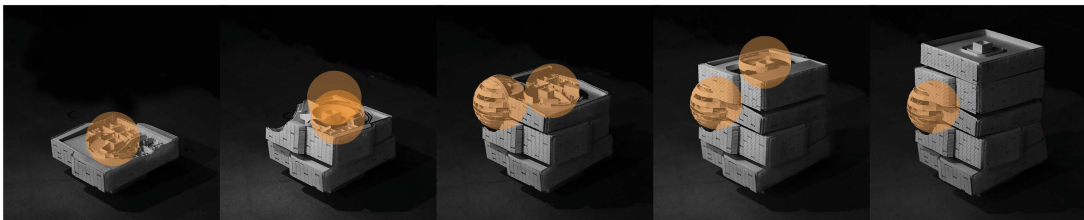
MacArthur Center

Program

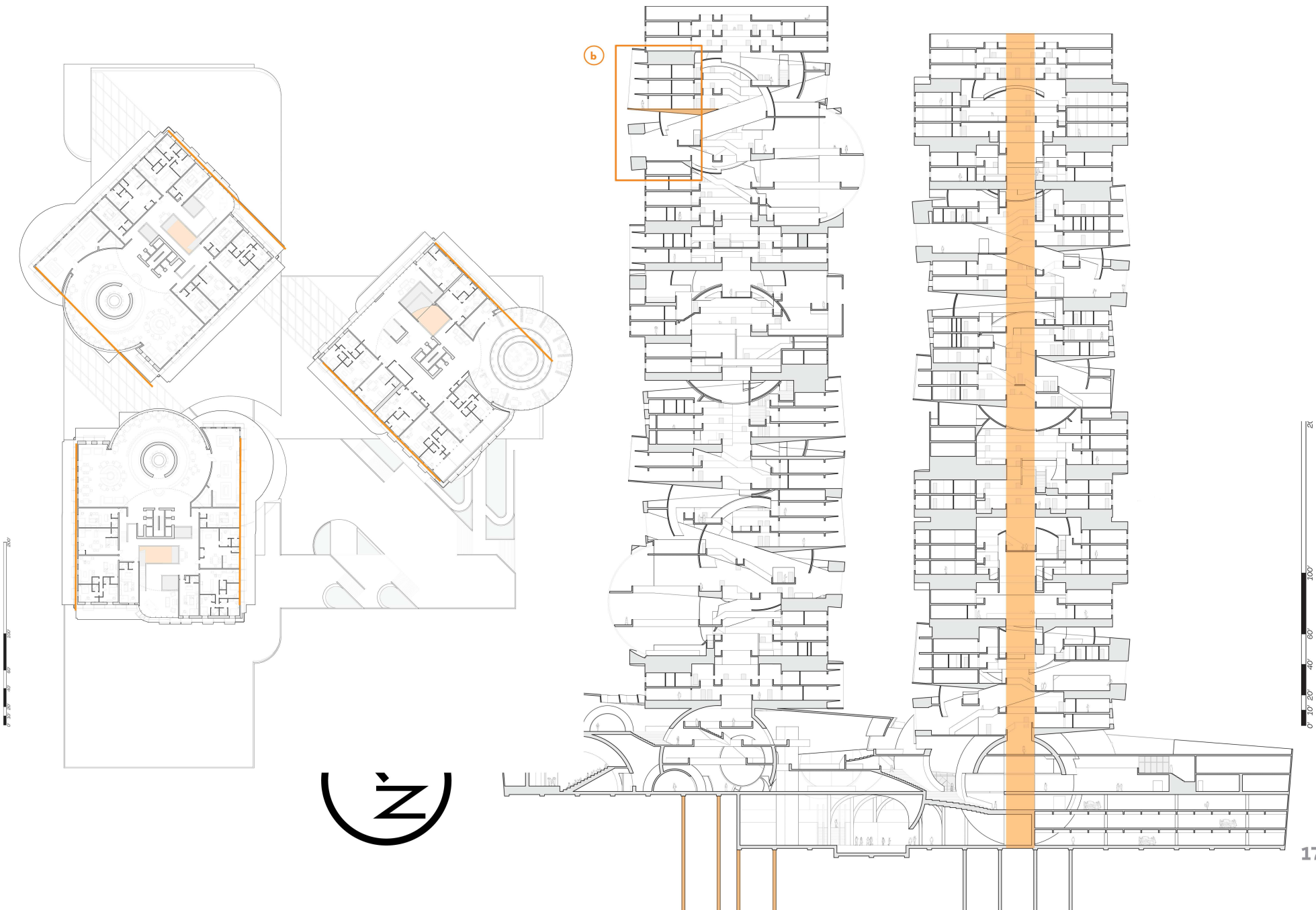
-  hotel
-  recreation
-  plaza/ street vendors
-  housing (general)
-  amenity bubble
-  medical/ social services
-  retail/ restaurants
-  galleries/ exhibition
-  Housing chunks mix units of varying rent brackets to discourage wealth-based occupation and encourage interaction and relationships between people of varying backgrounds and statuses.



Chunk model, space



Structure + sustainability



Structure + sustainability

