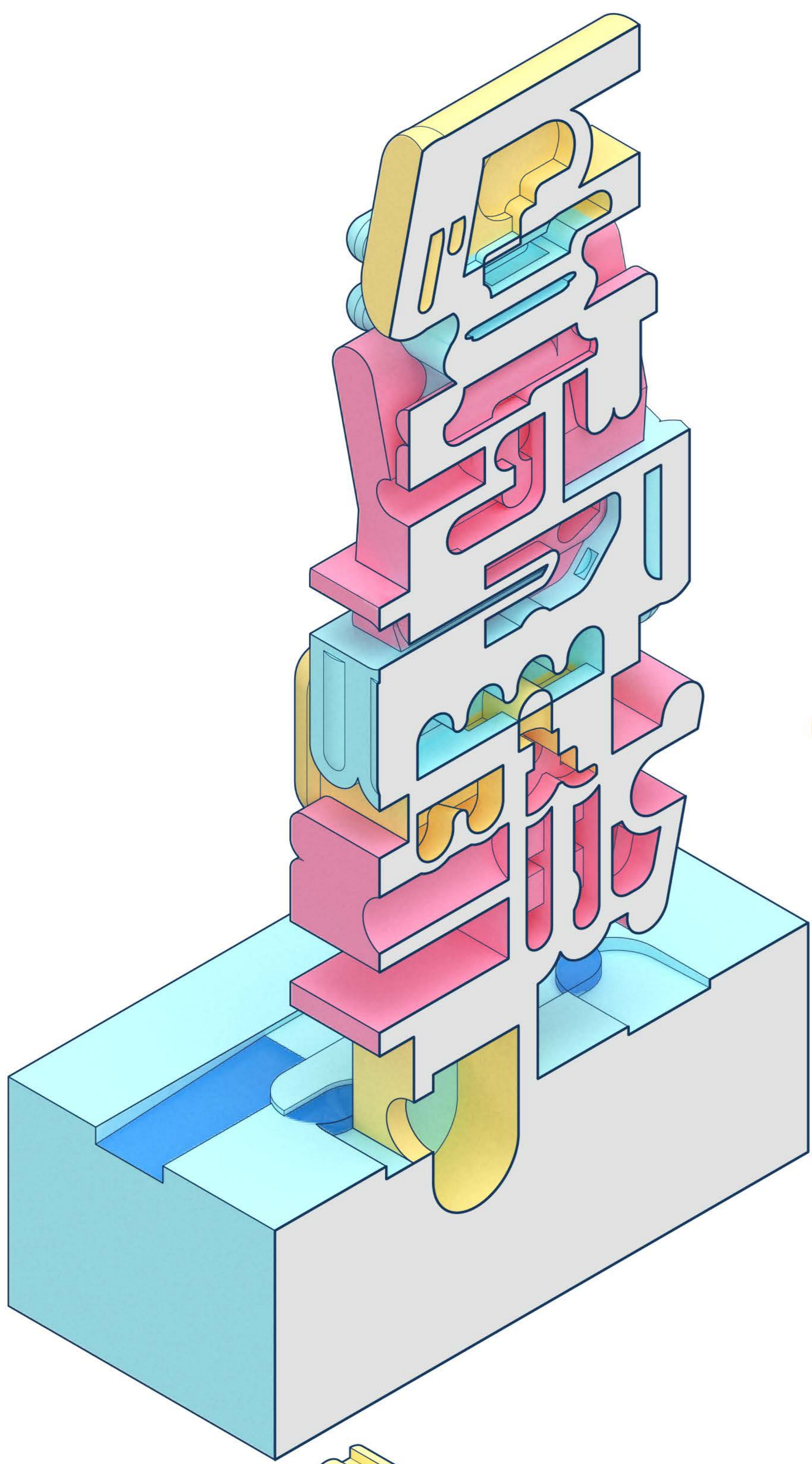
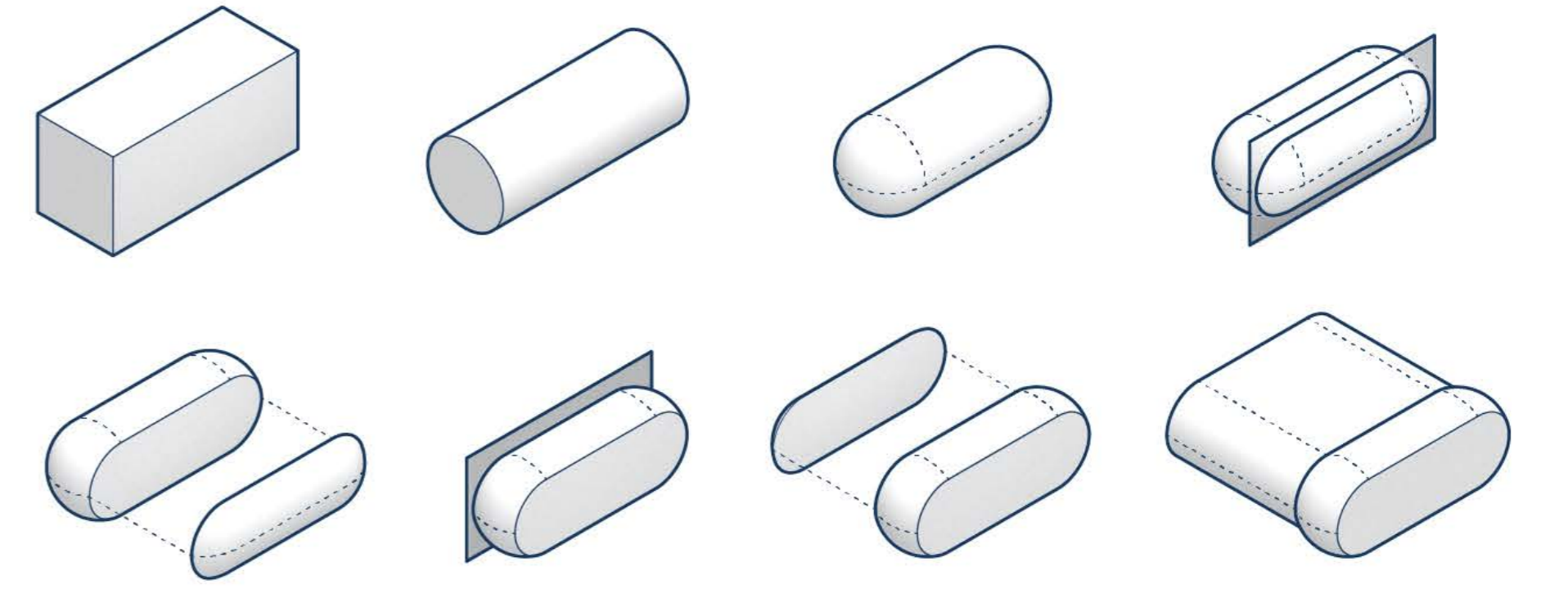
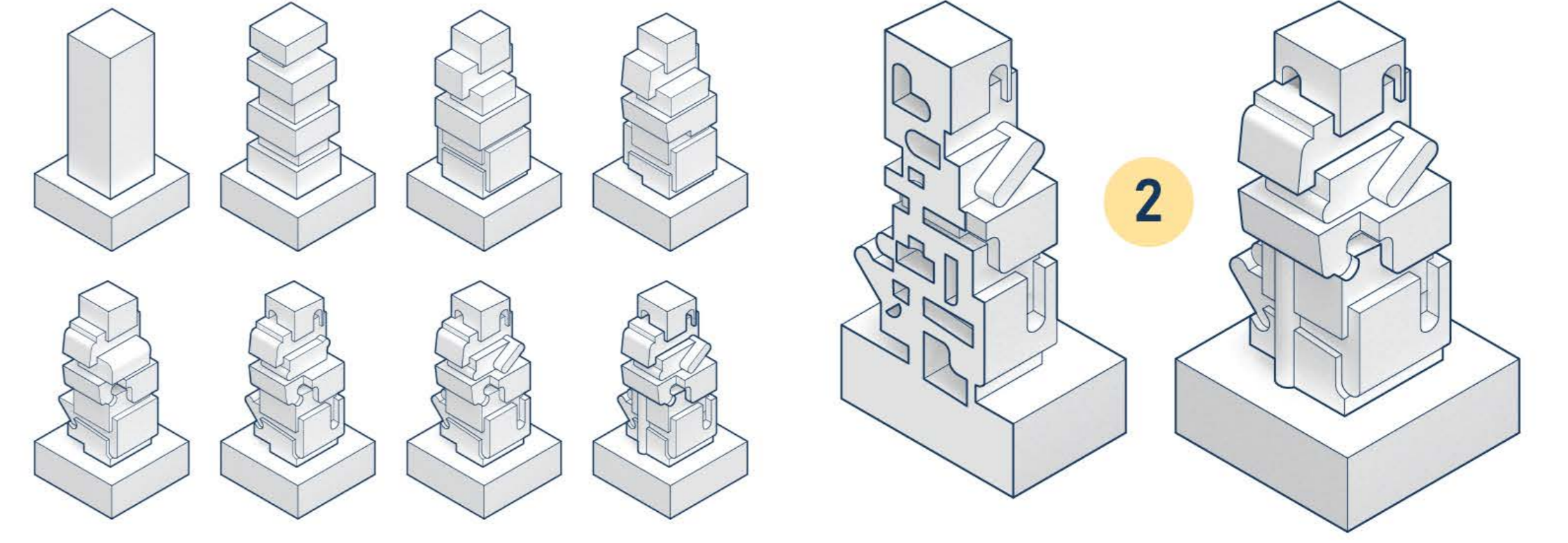
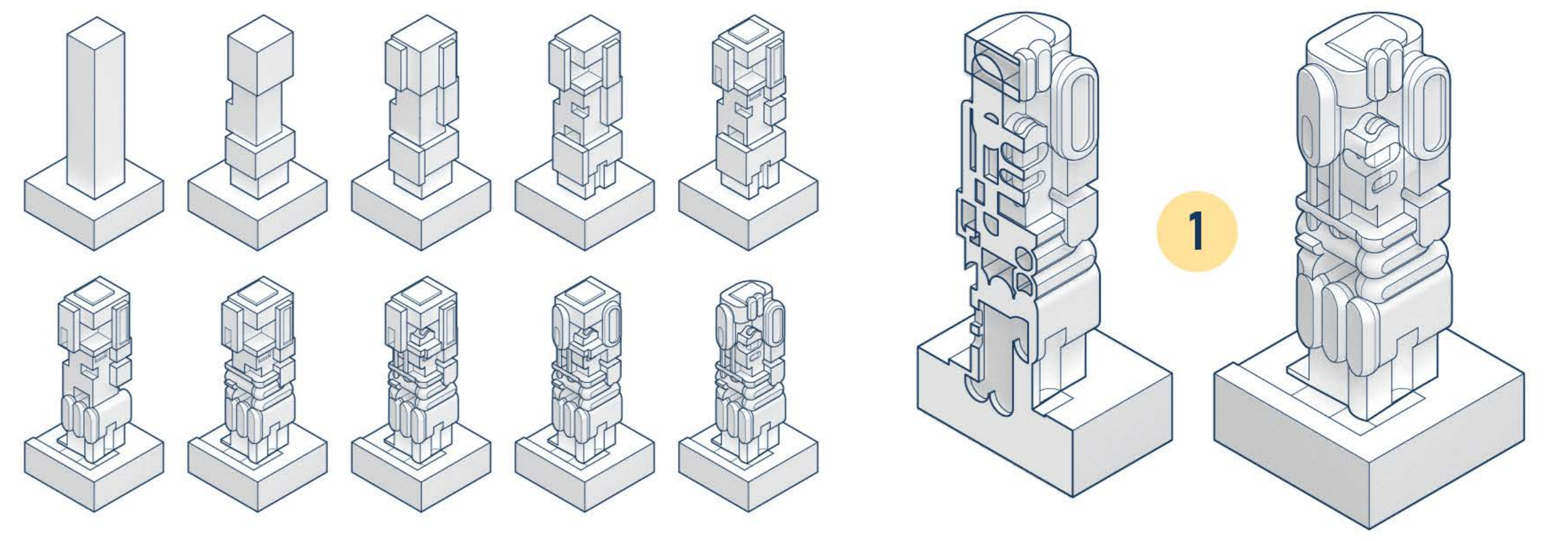
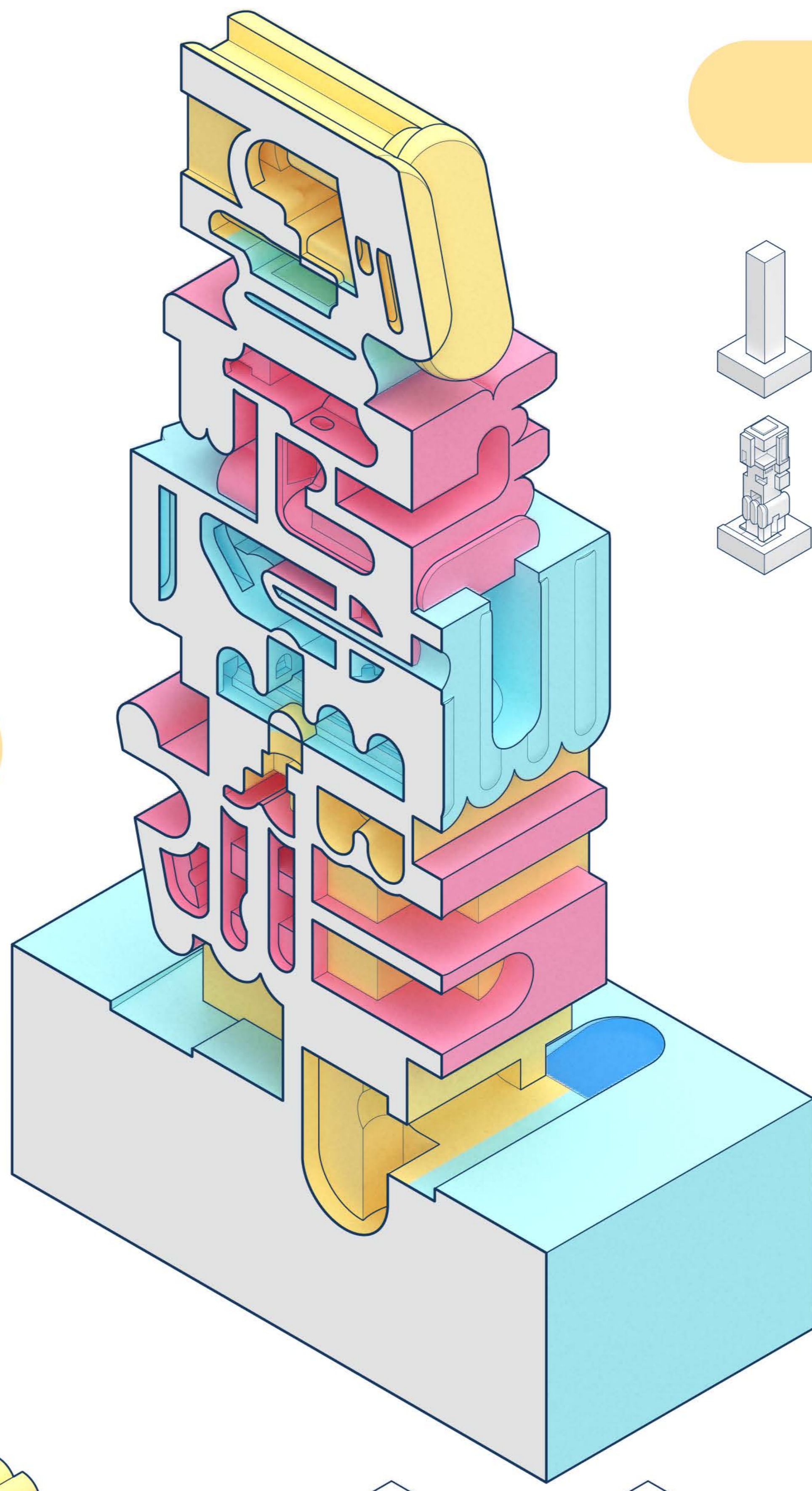


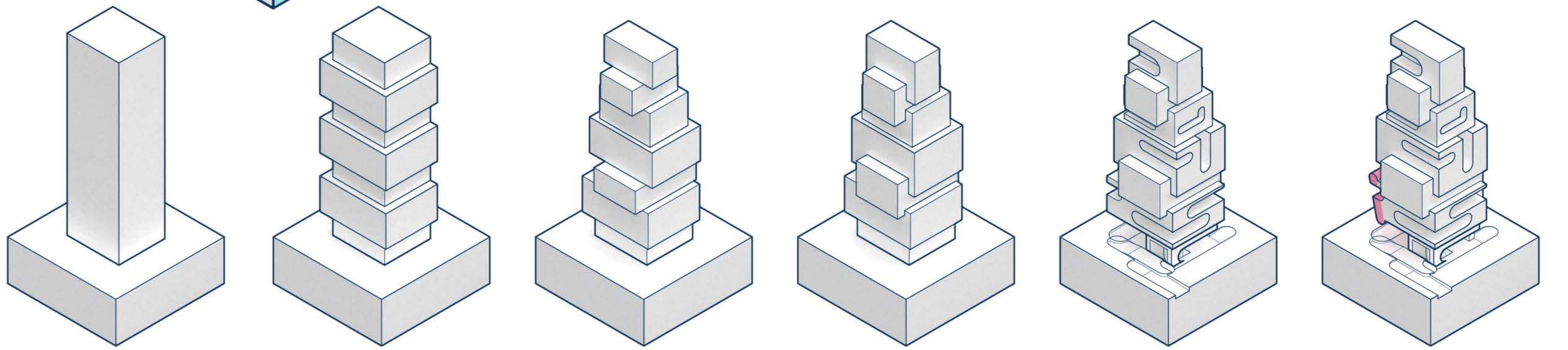
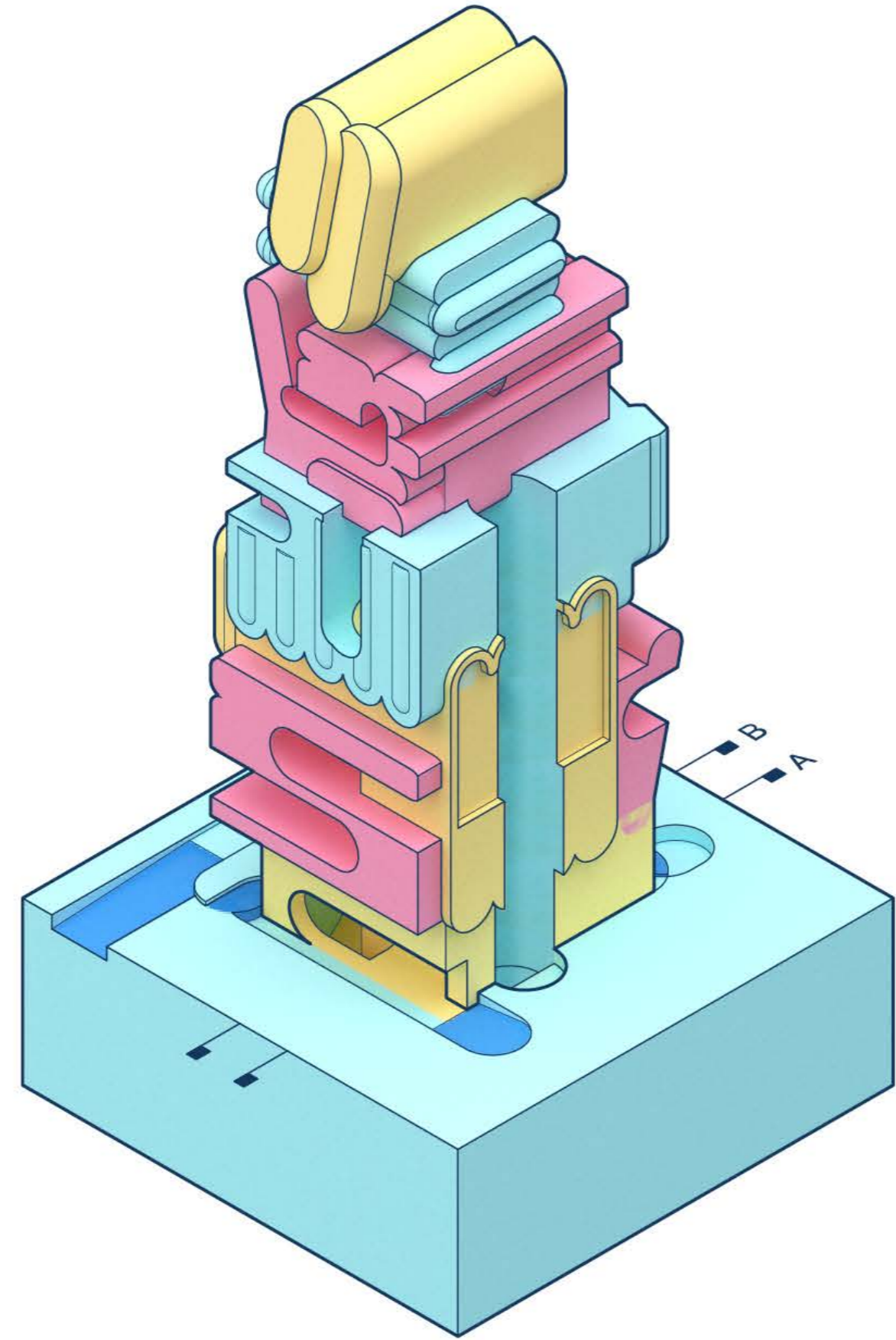
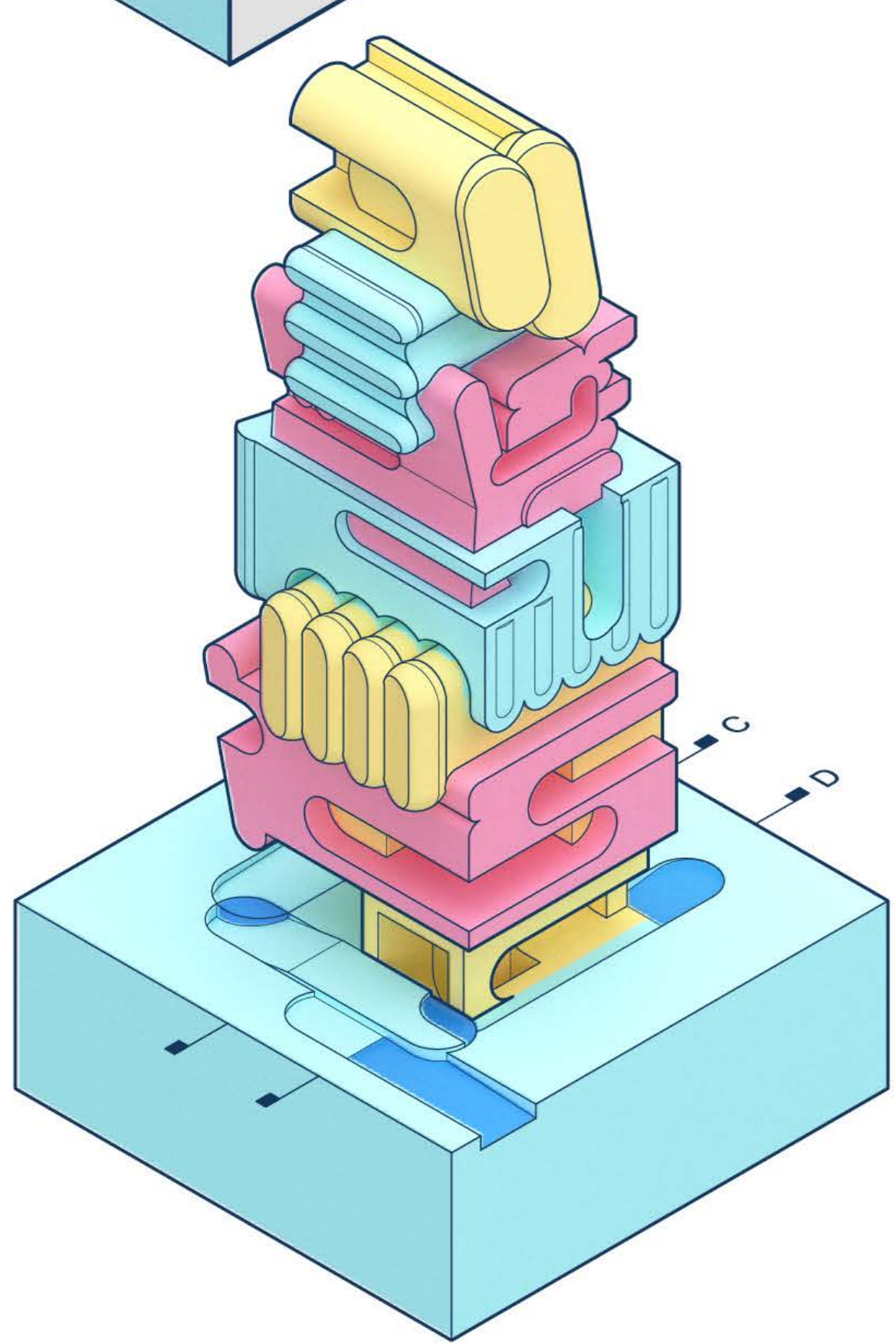
Dissimulation Study



3

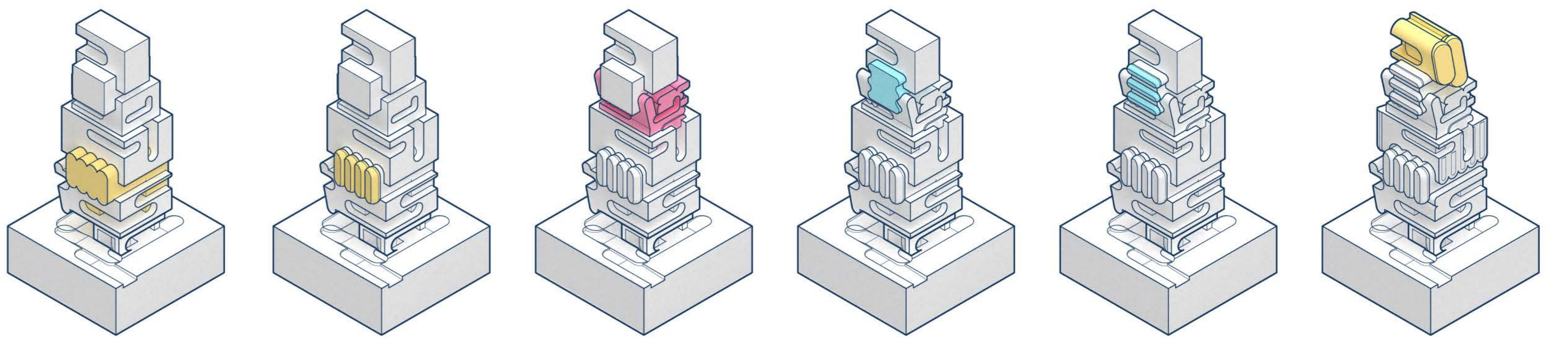


module study

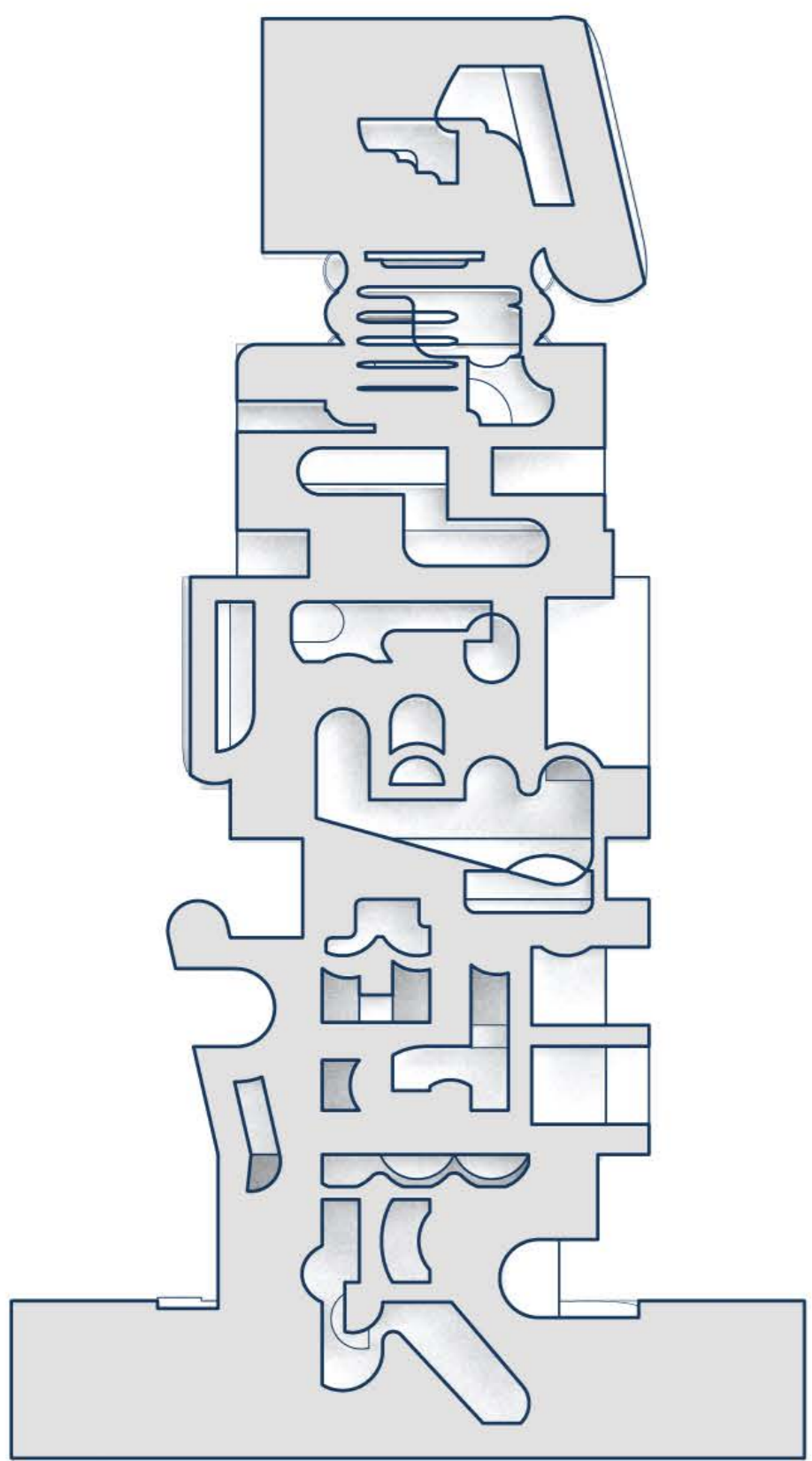


massing

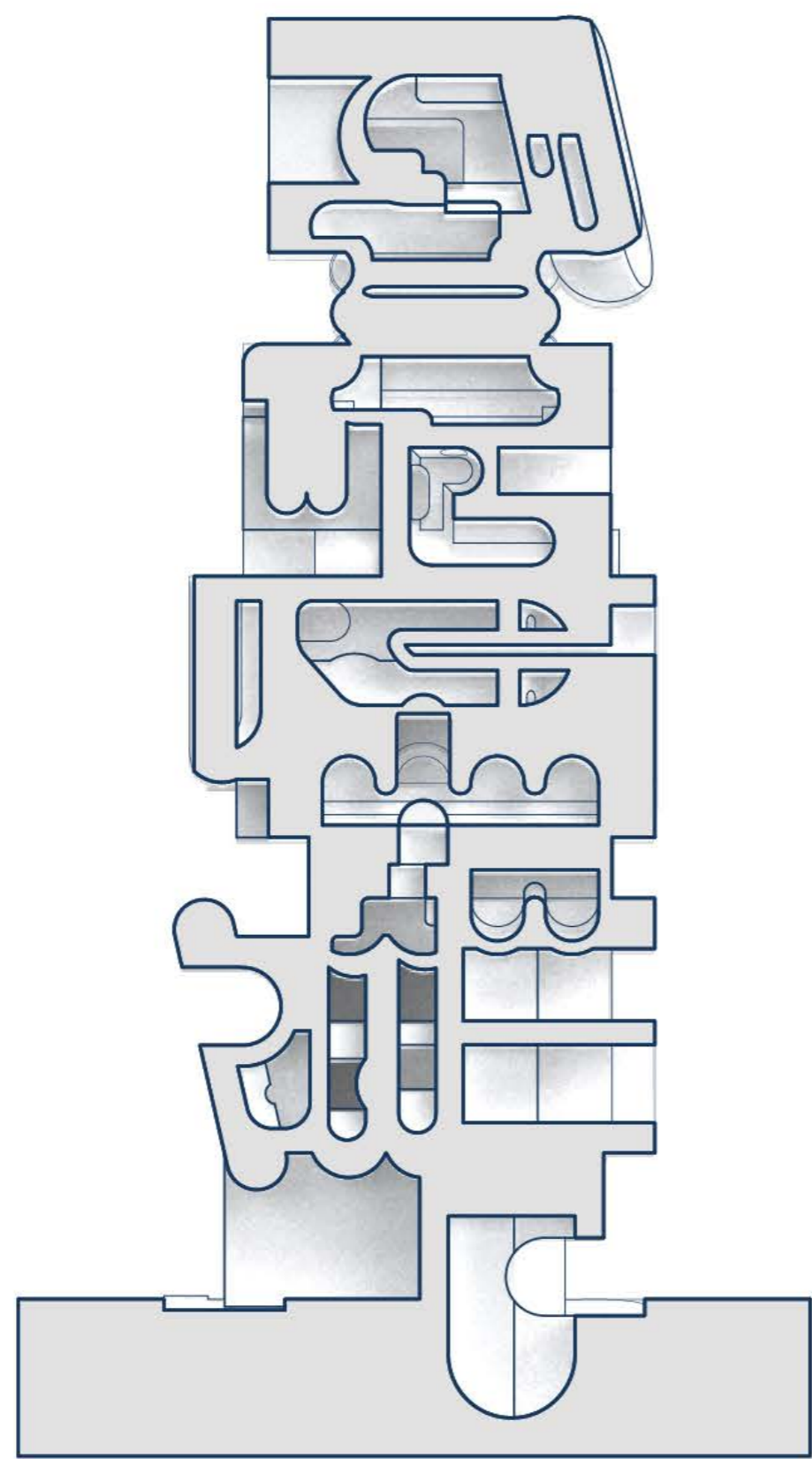
void space



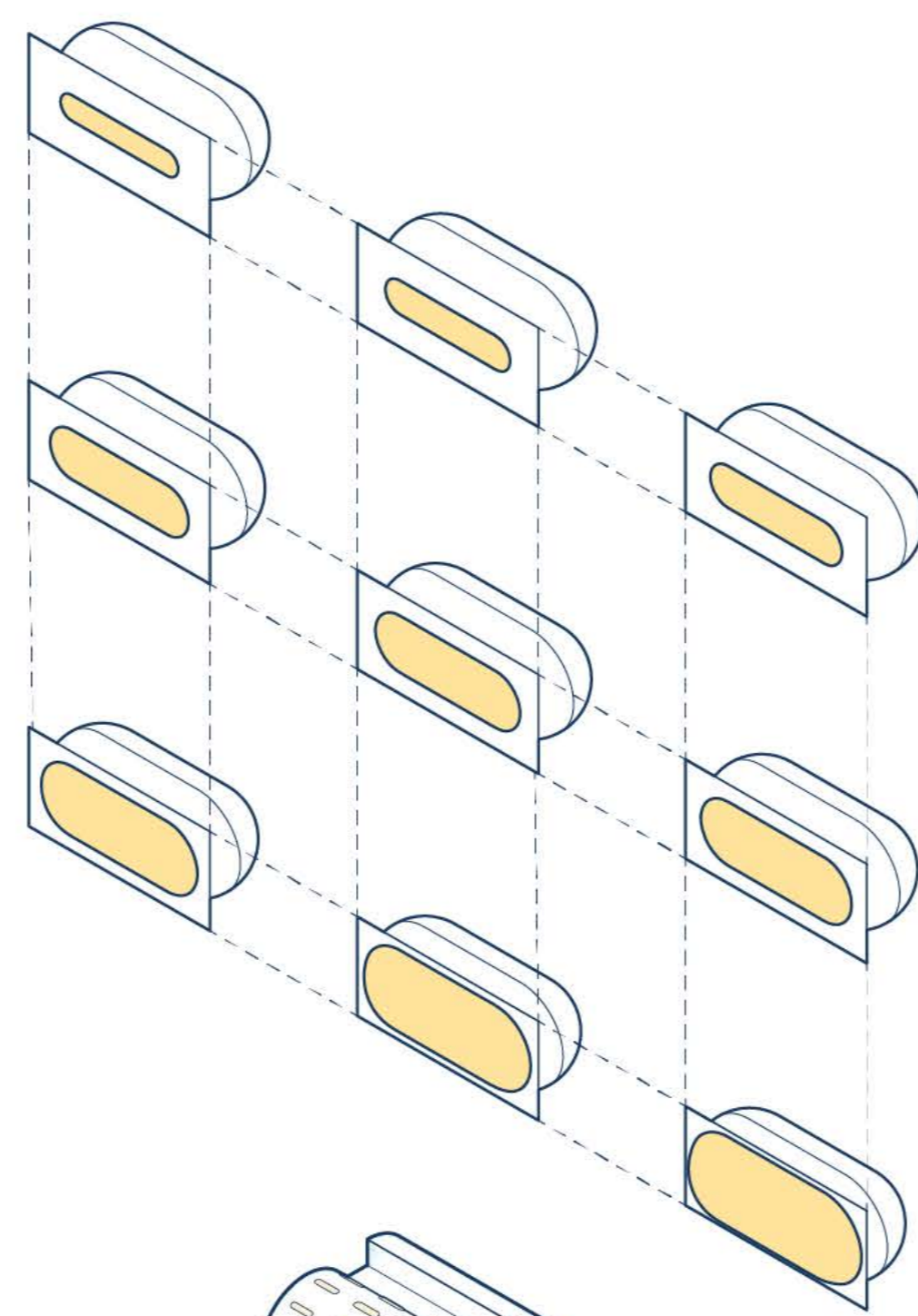
intervention



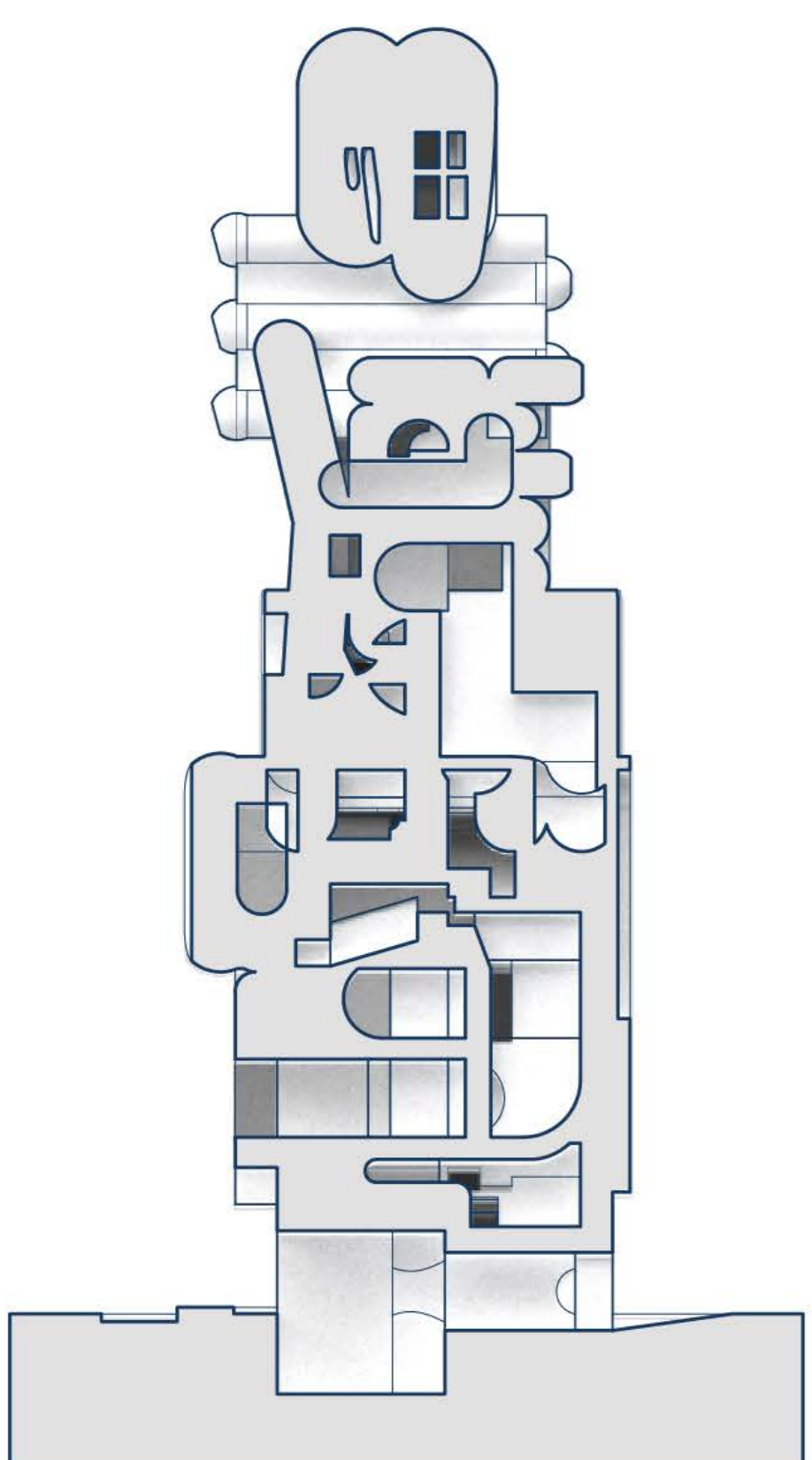
section A



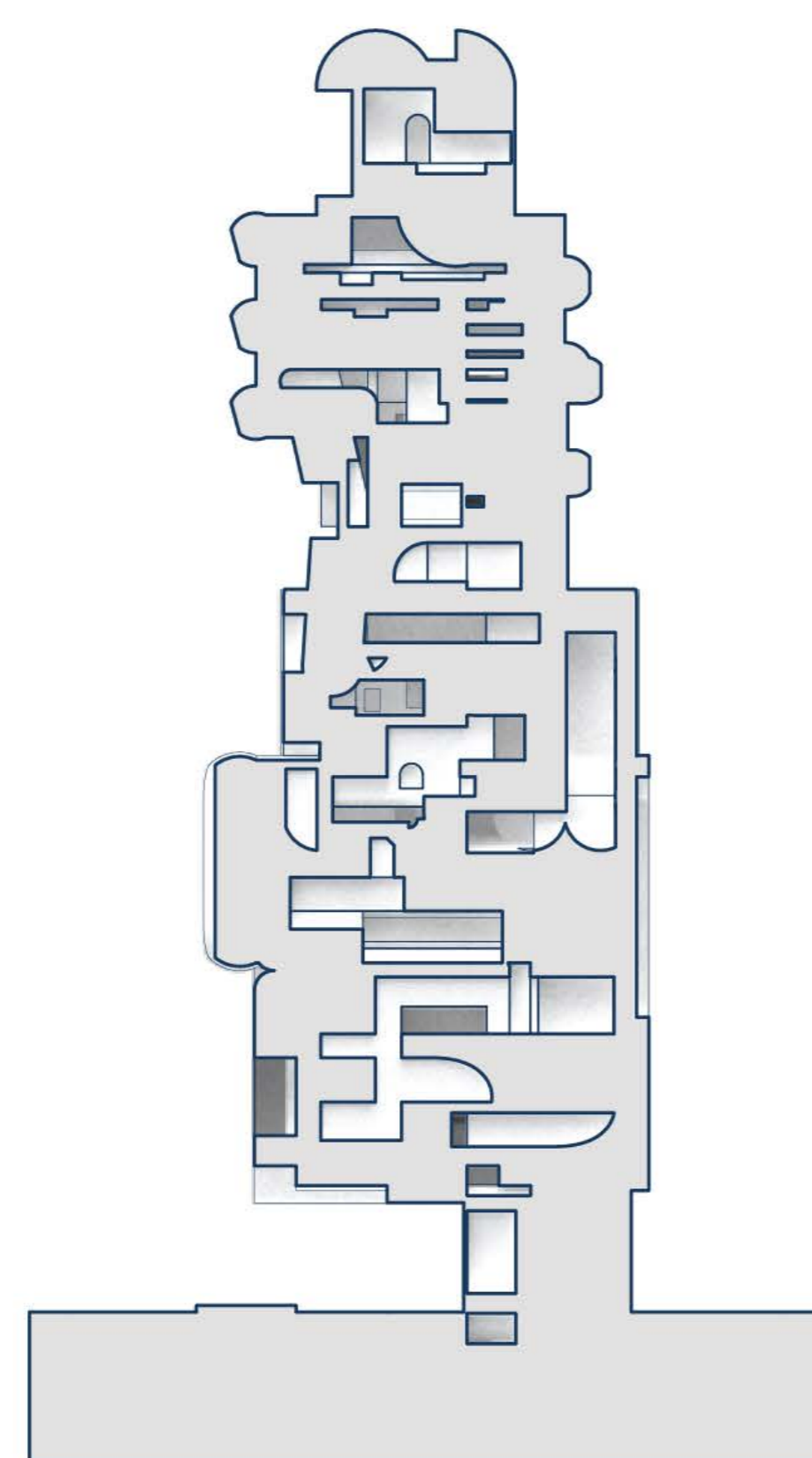
section B



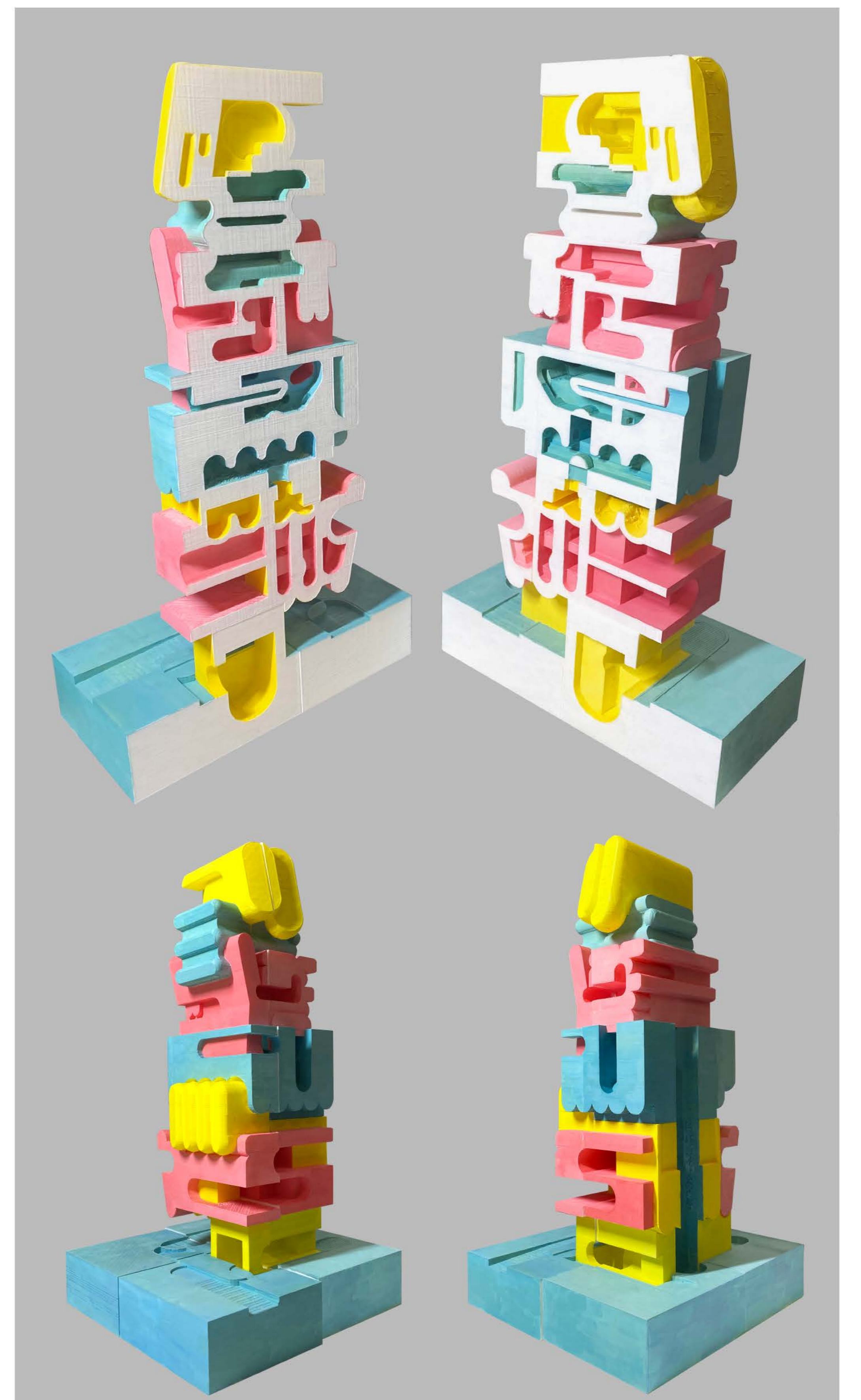
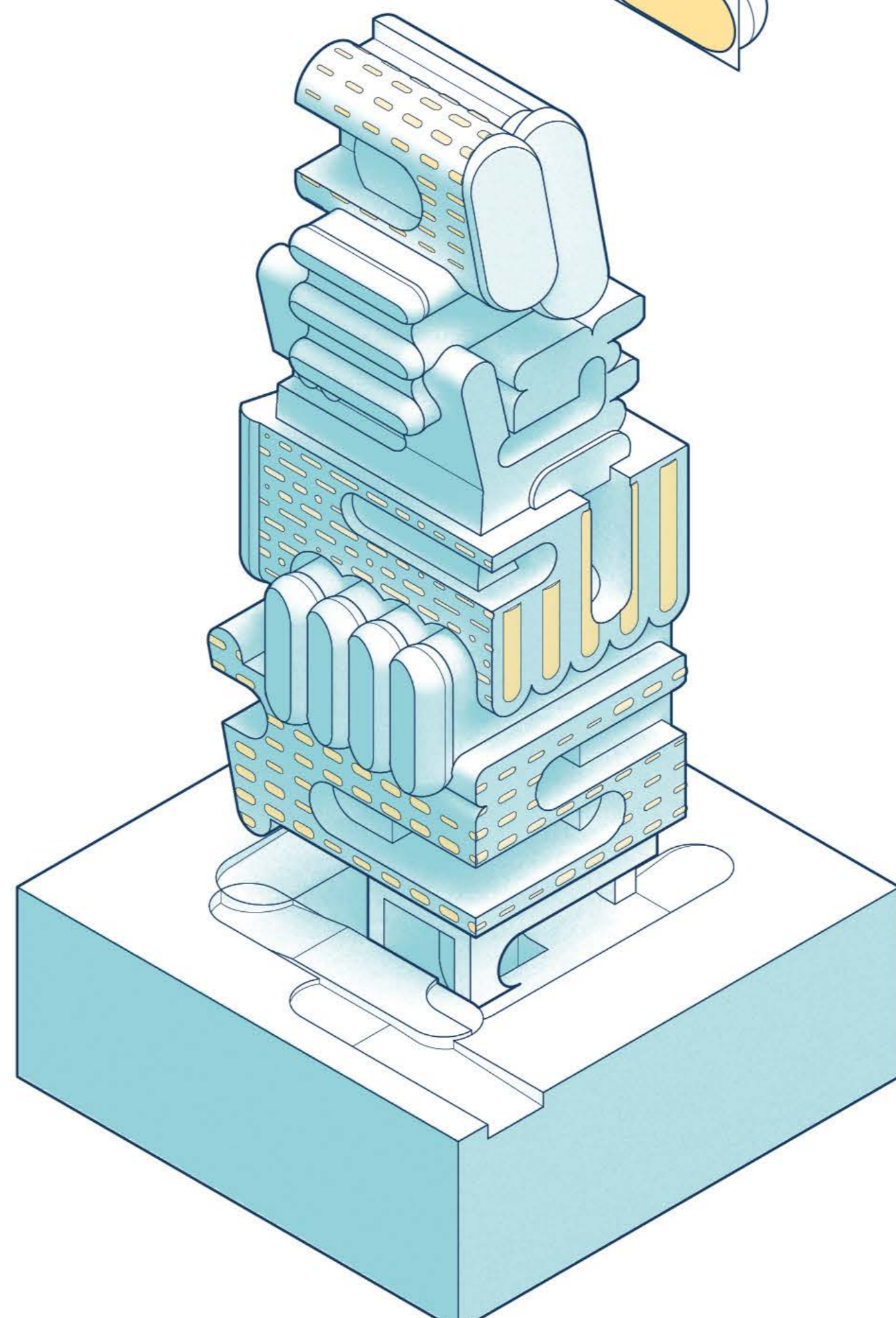
texture study



section C

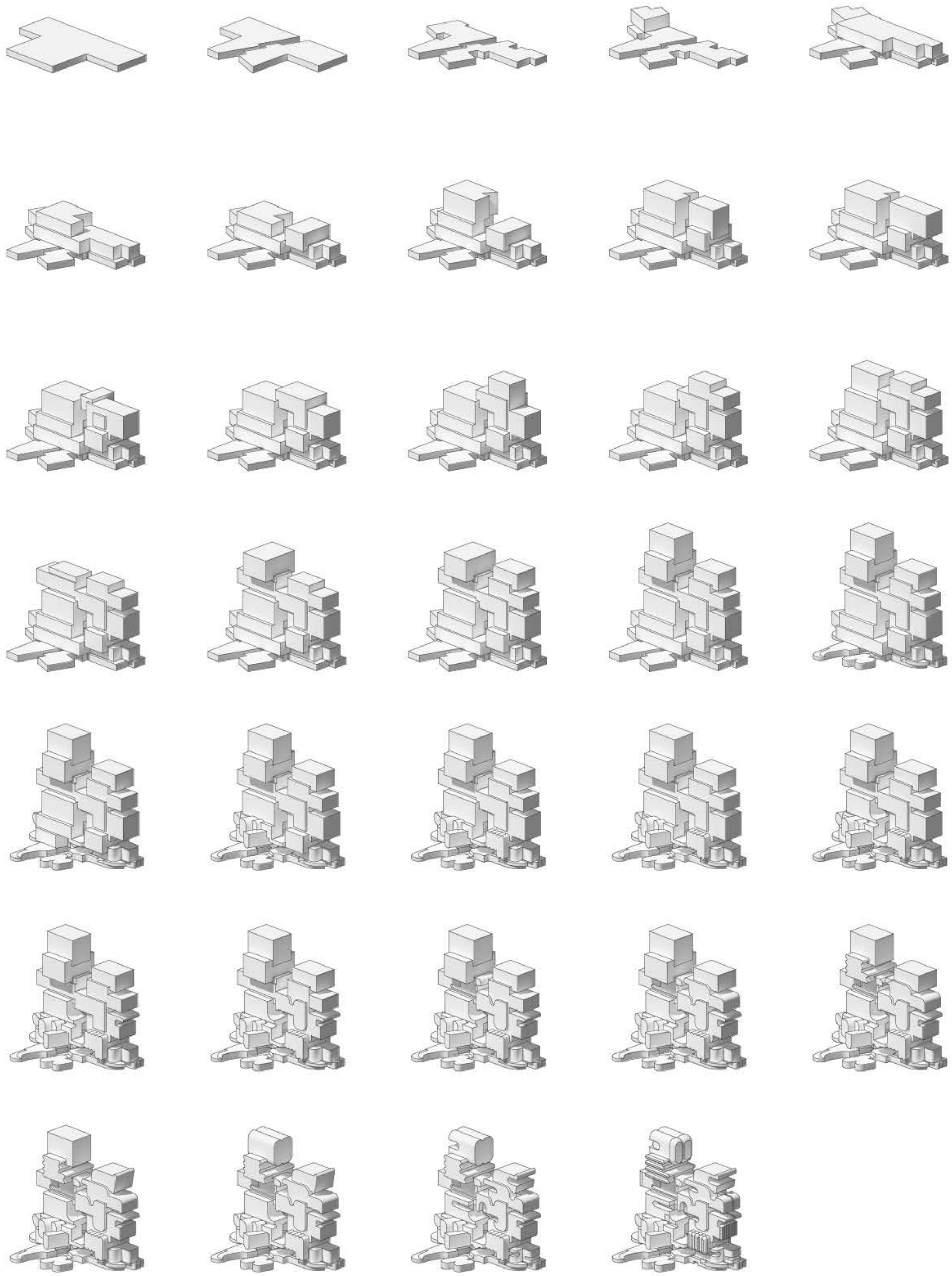


section D

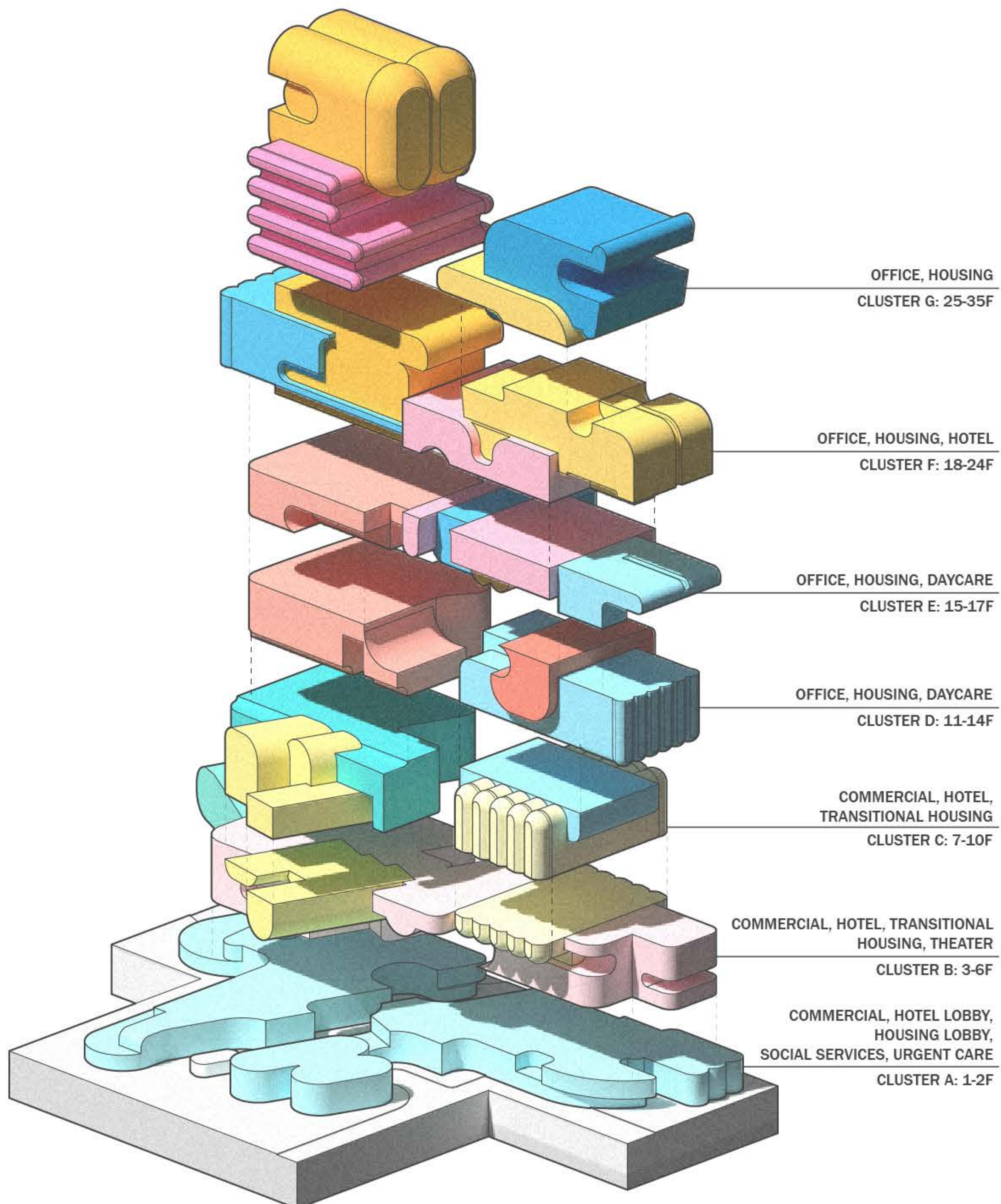


SOFT LANDING

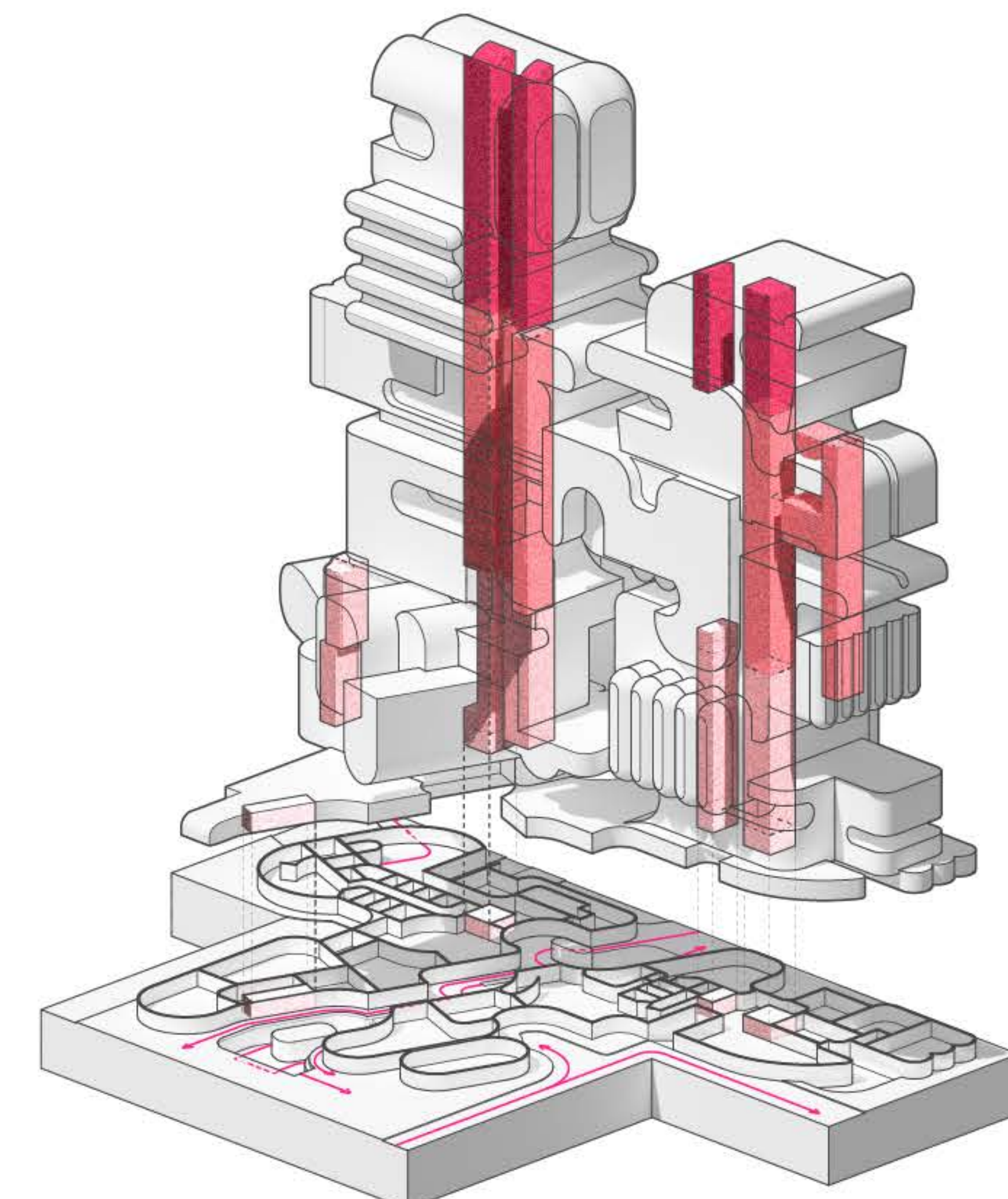
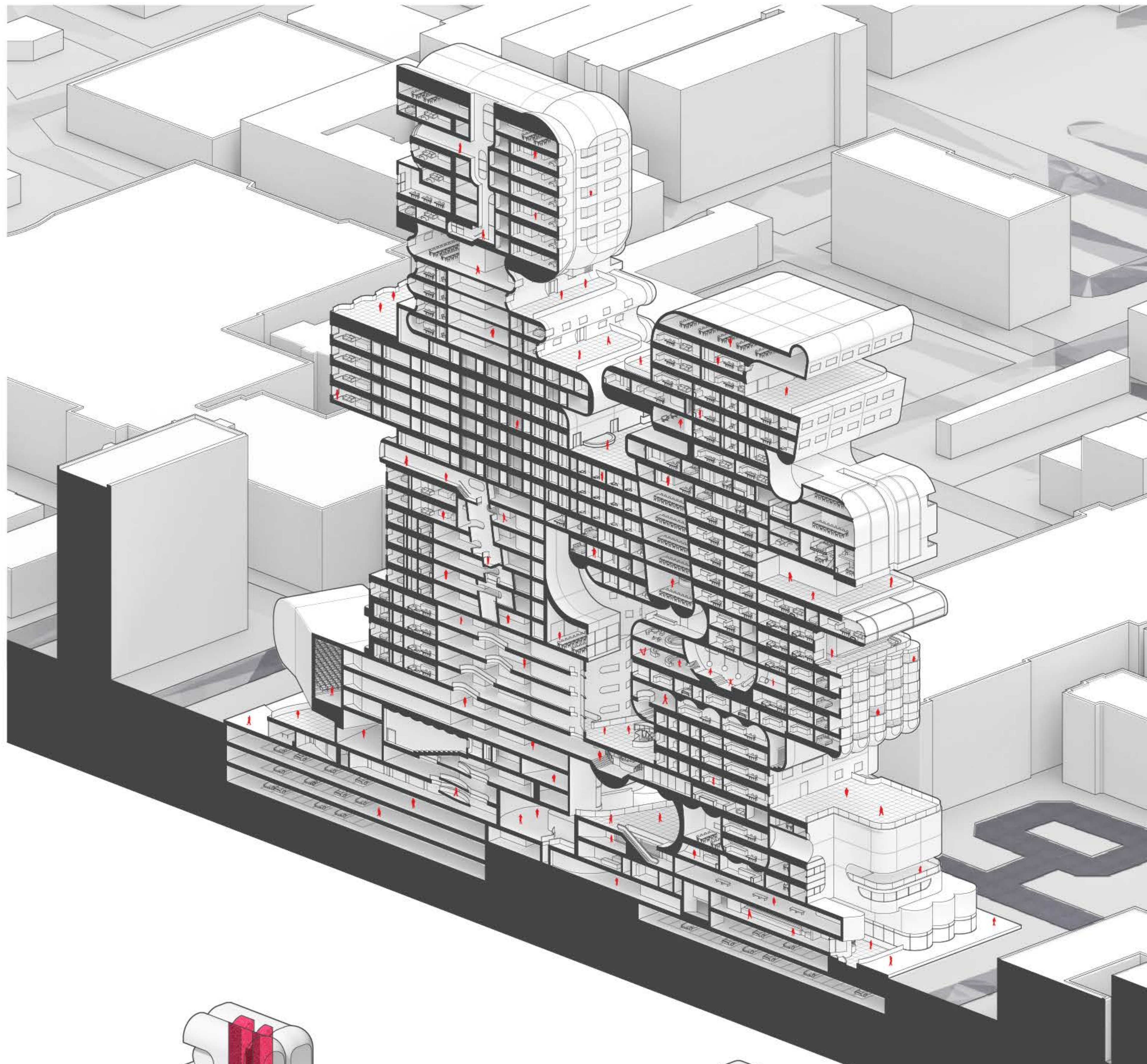
The Soft Landing is a multi-functional high-rise project that sits across MacArthur Park, Los Angeles, and connects itself with the existing underground Metro station. It strives to provide visual softness through its form and coloration, programmatic softness that eliminates boundaries, and social/economical softness through the transitional nature of the programs.



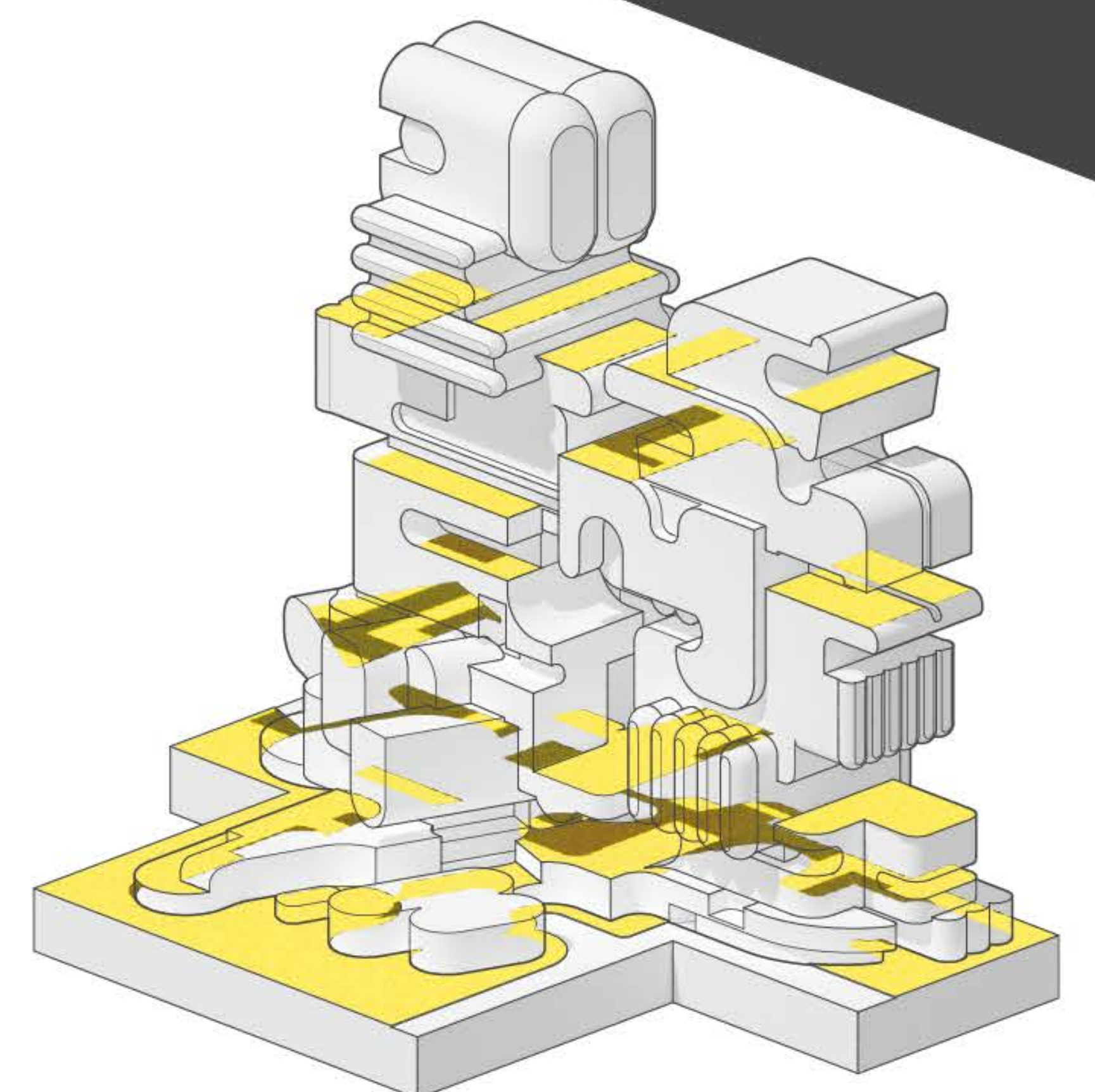
FORM DERIVATION



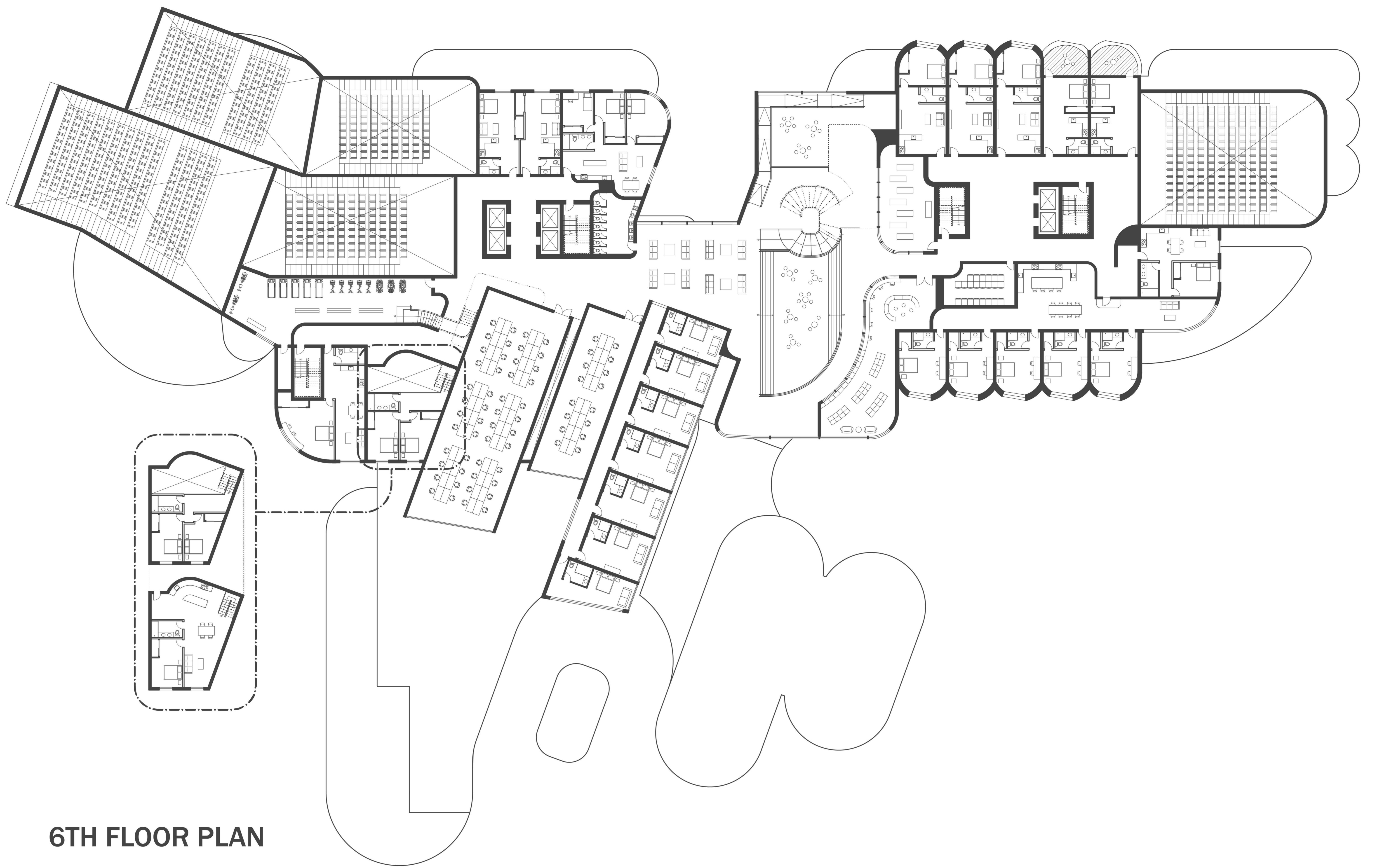
TYPES, CLUSTERS, PROGRAM



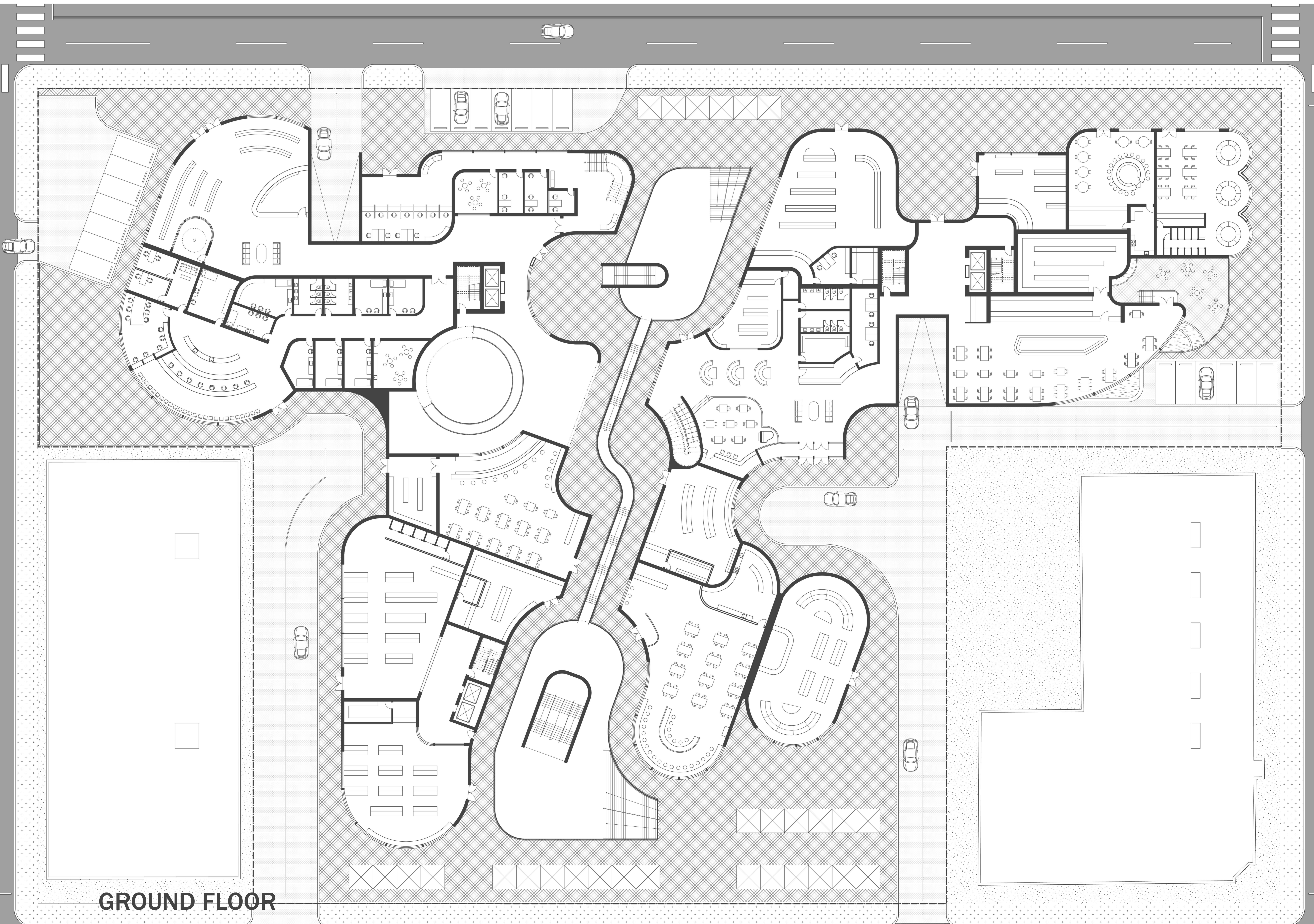
CIRCULATION & SITE ACCESS



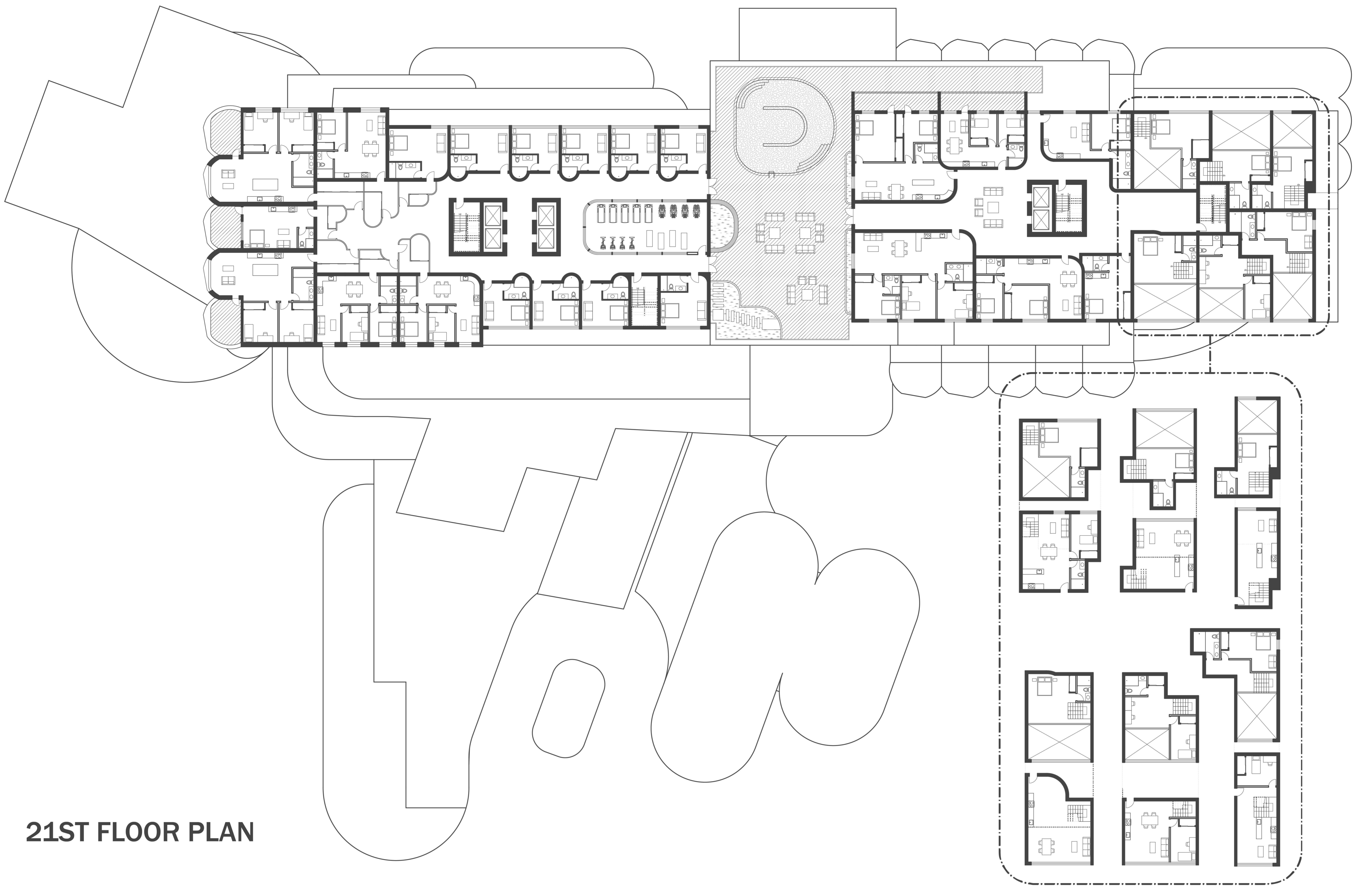
OPEN SPACE



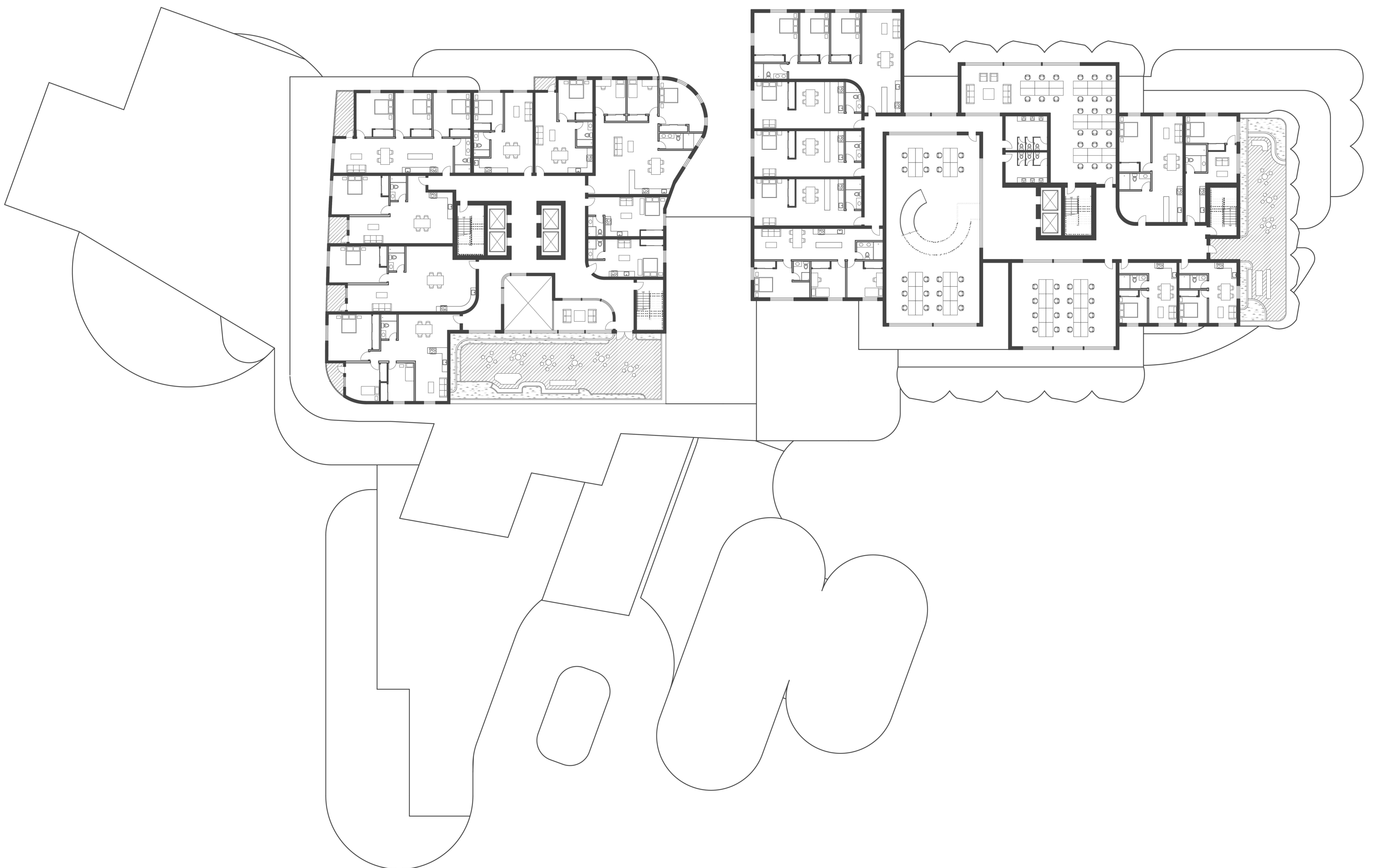
6TH FLOOR PLAN



GROUND FLOOR



21ST FLOOR PLAN



15TH FLOOR PLAN

