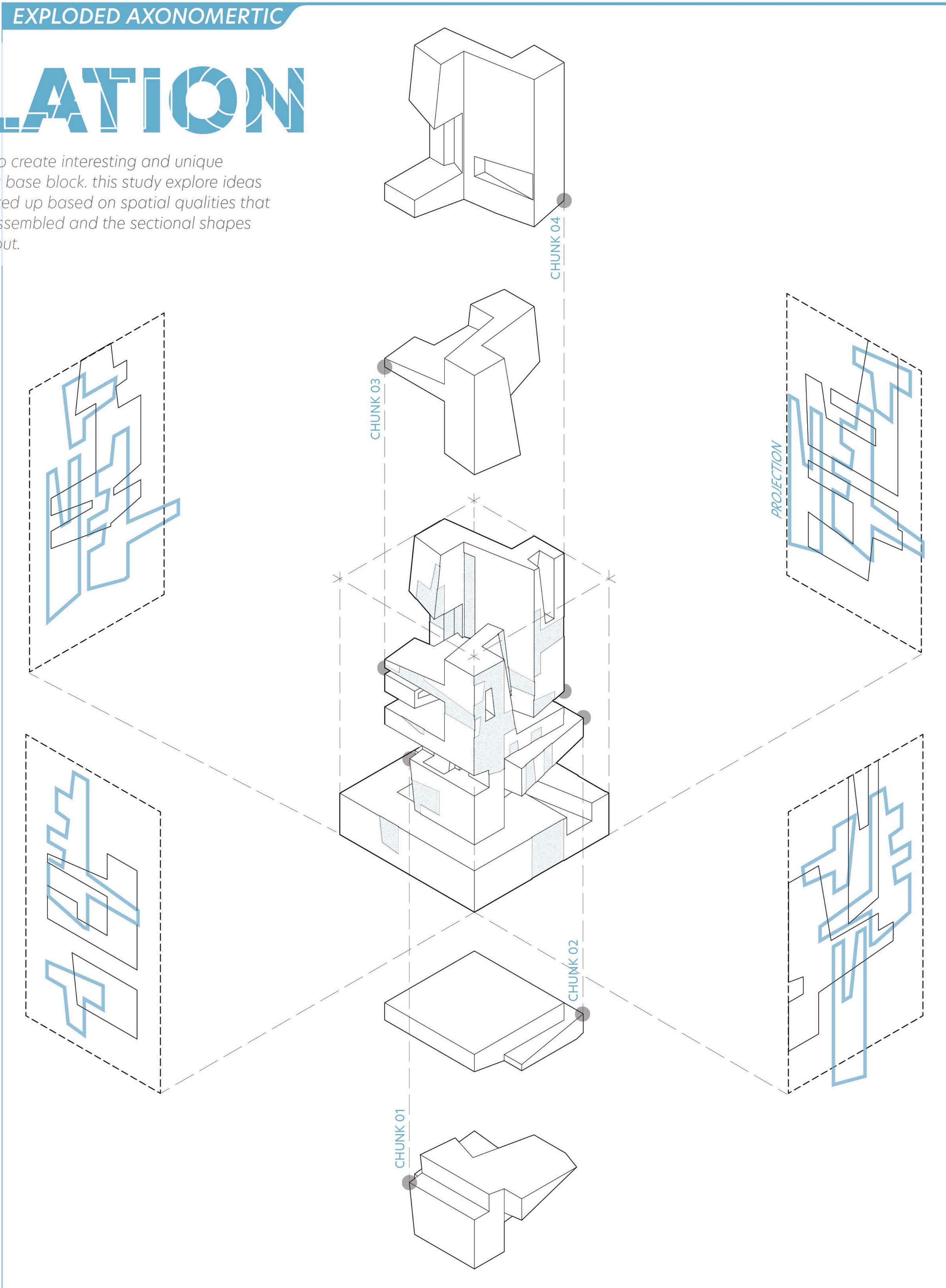
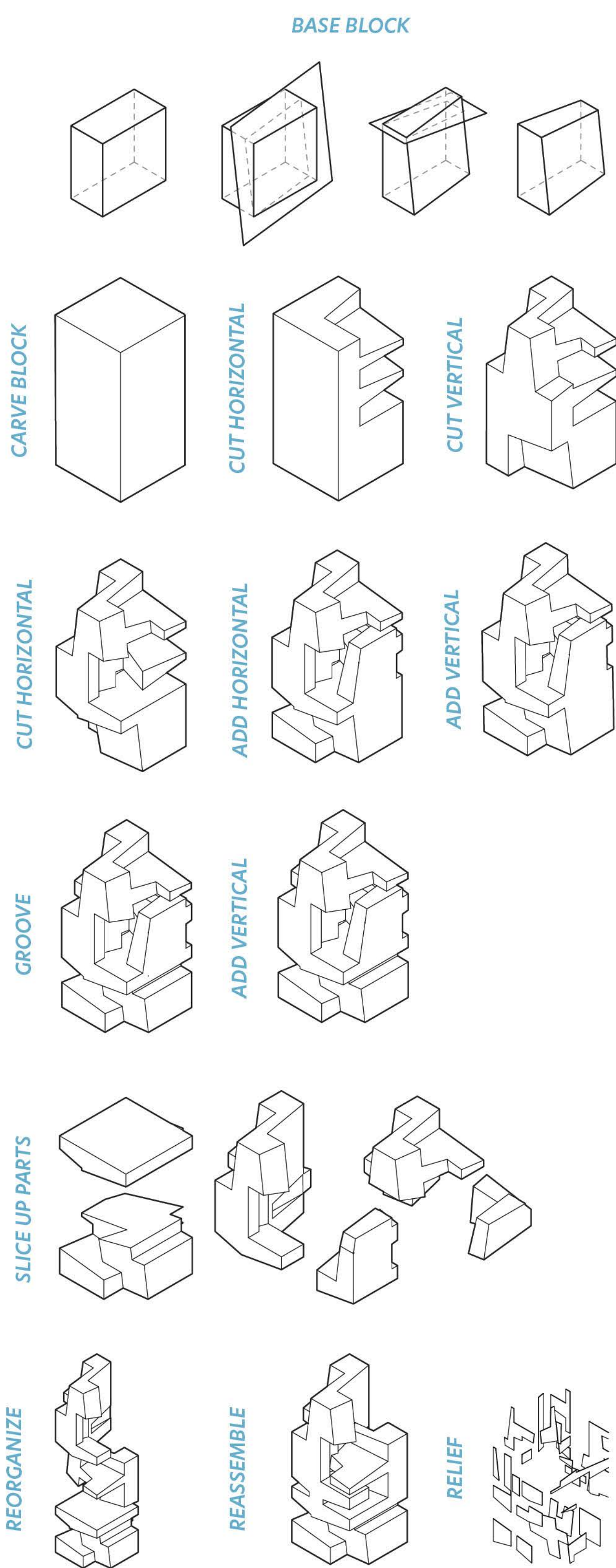




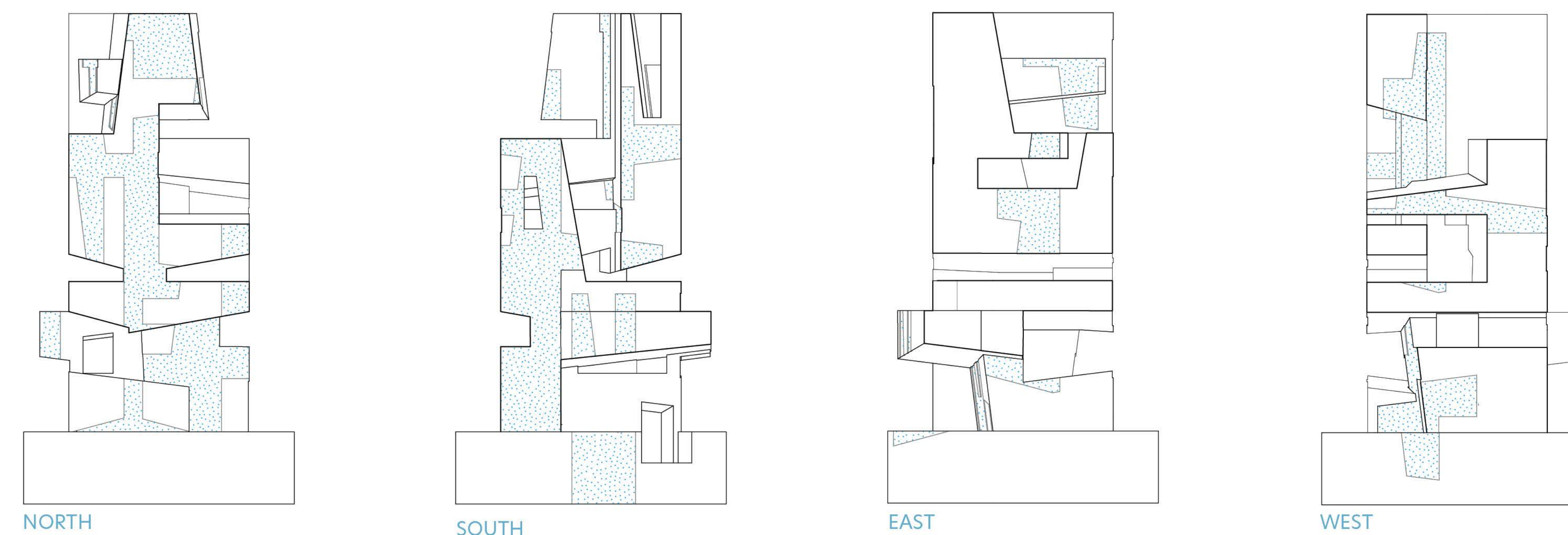
DISSIMULATION

The dissimulation study is an exploration of primitives to create interesting and unique spatial moments in section, plan, and elevation. Using a base block, this study explores ideas of contouring and tunnelling. The resulting artifact is sliced up based on spatial qualities that are reminiscent of the original base block. It is then reassembled and the sectional shapes are projected onto the elevation and bas-relief carved out.

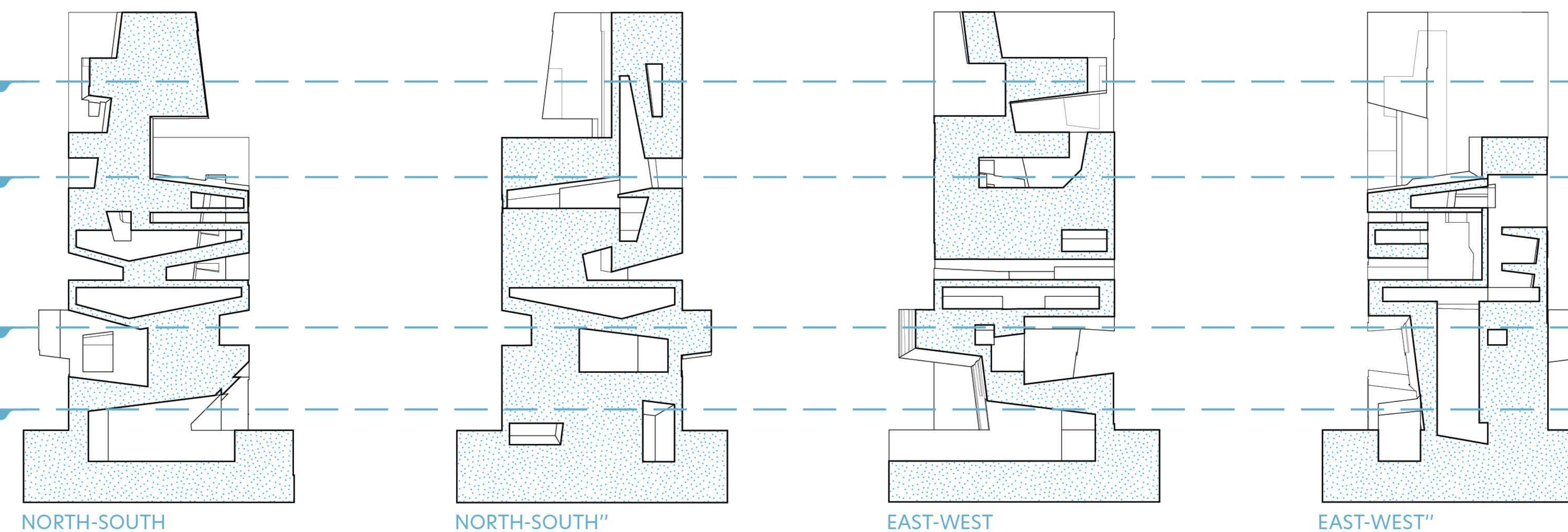
EXPLODED AXONOMETRIC



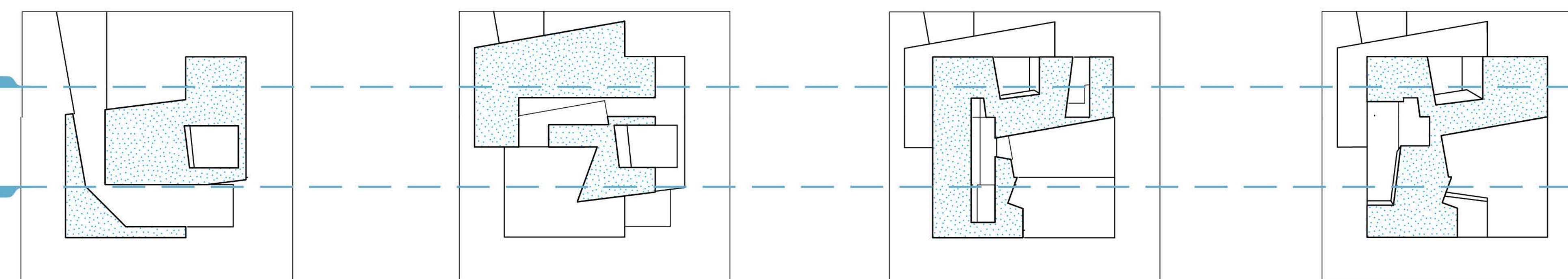
ELEVATIONS



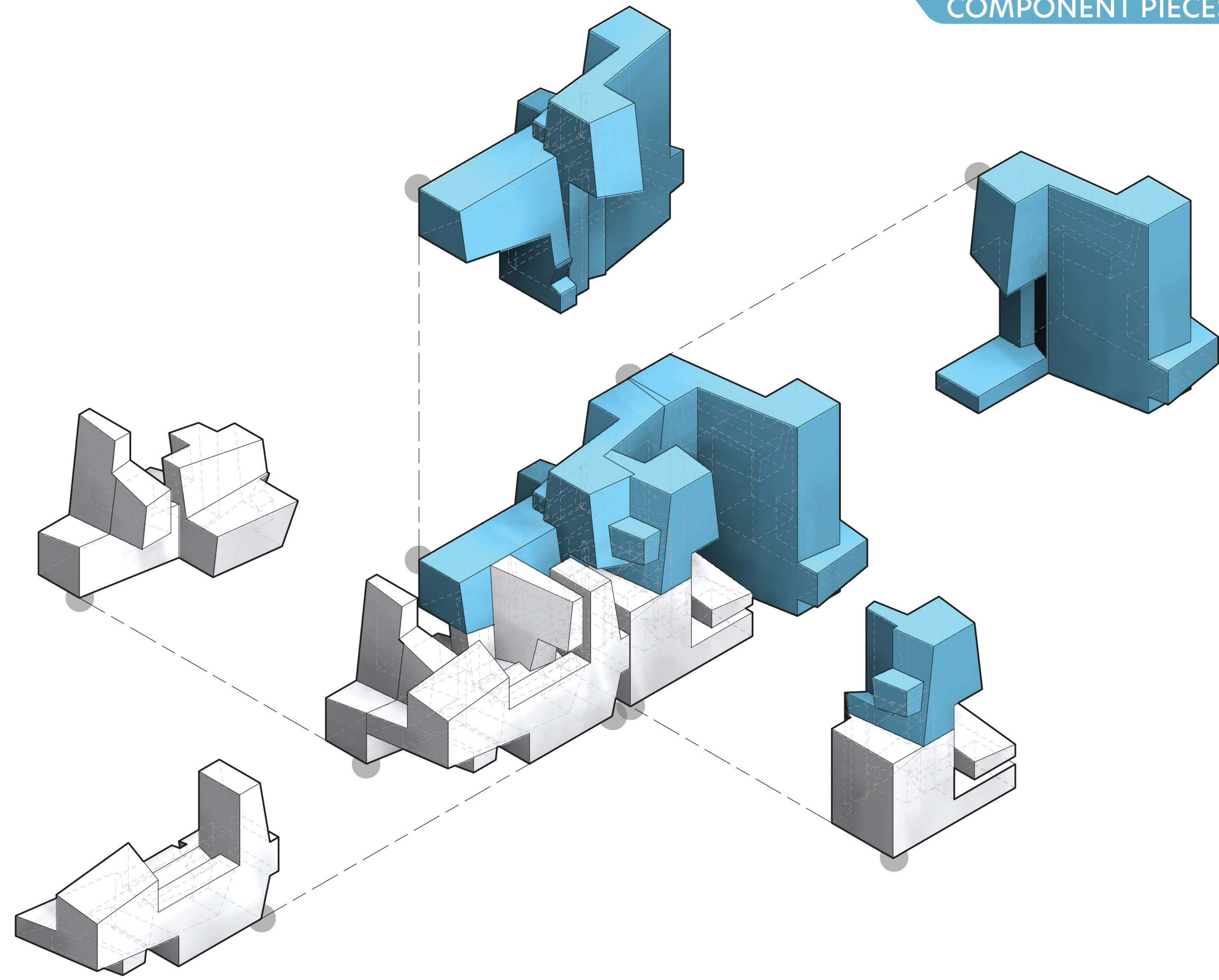
SECTIONS



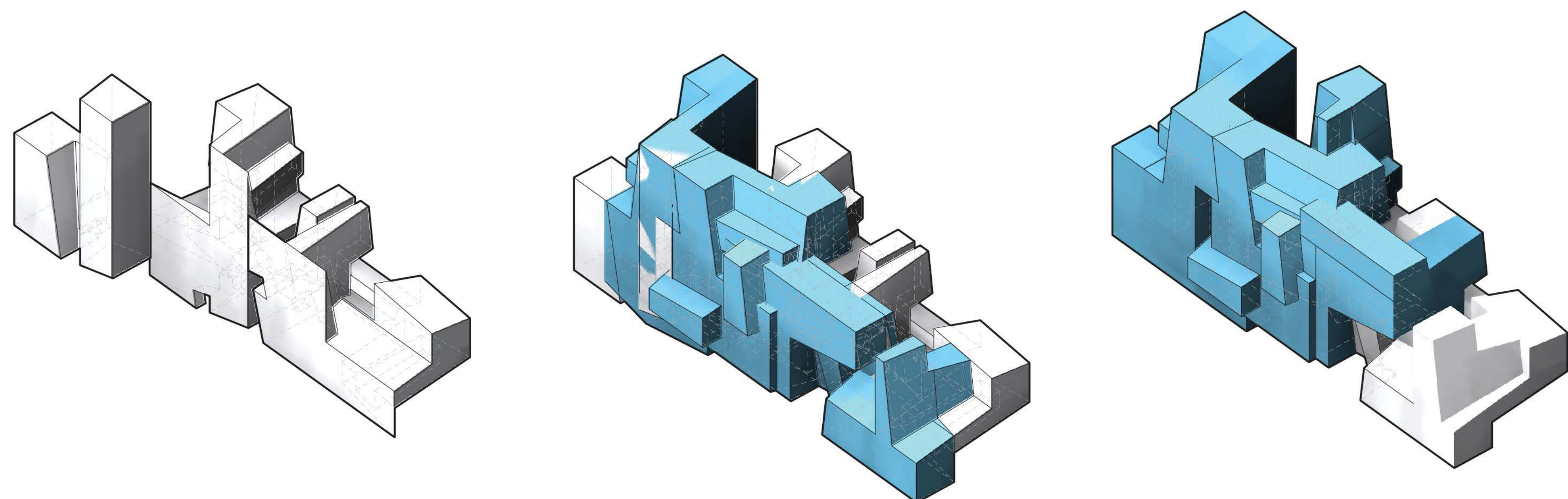
PLANS



COMPONENT PIECES



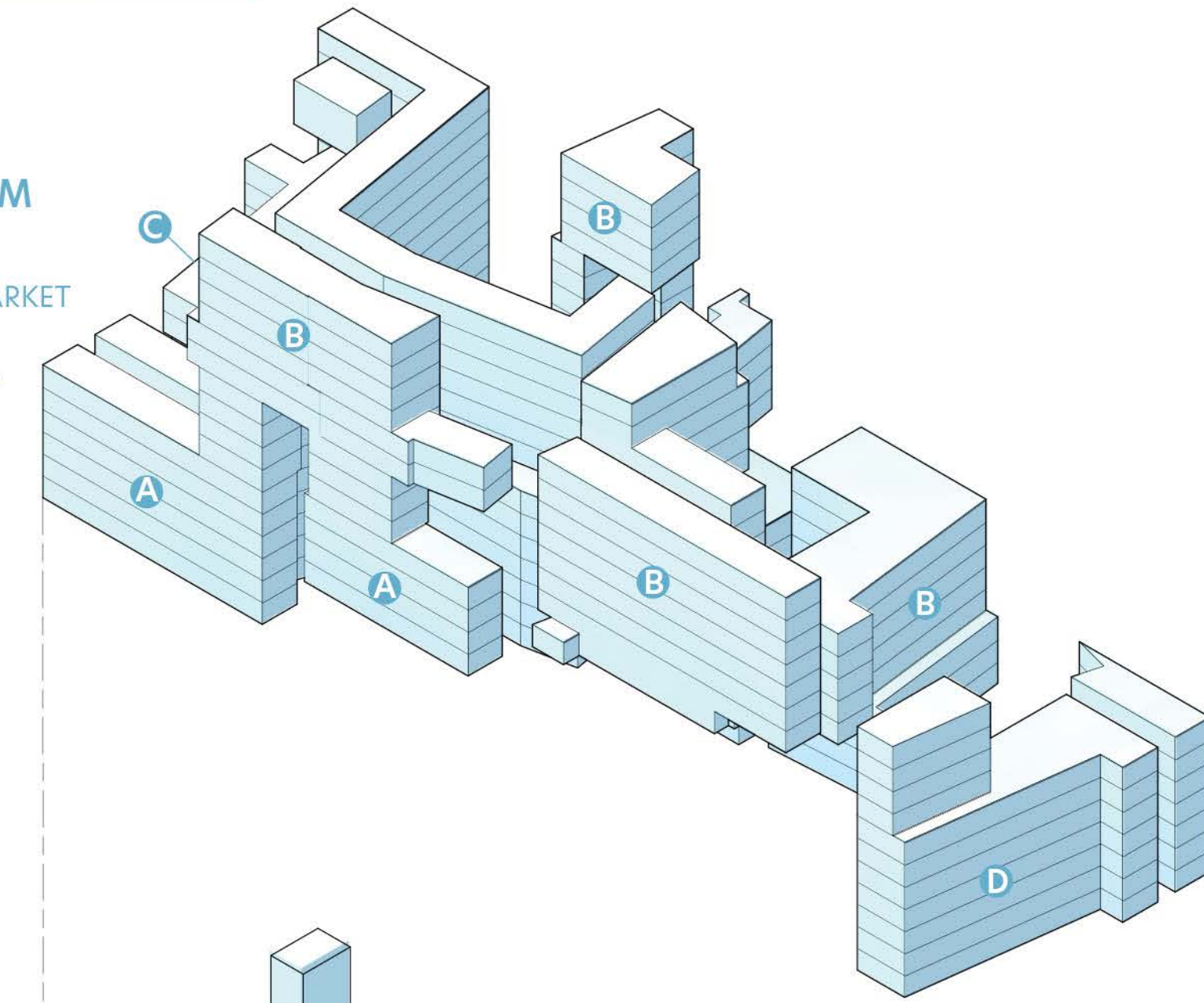
FORMAL DEVELOPMENT



EXPLODED AXONOMETRIC

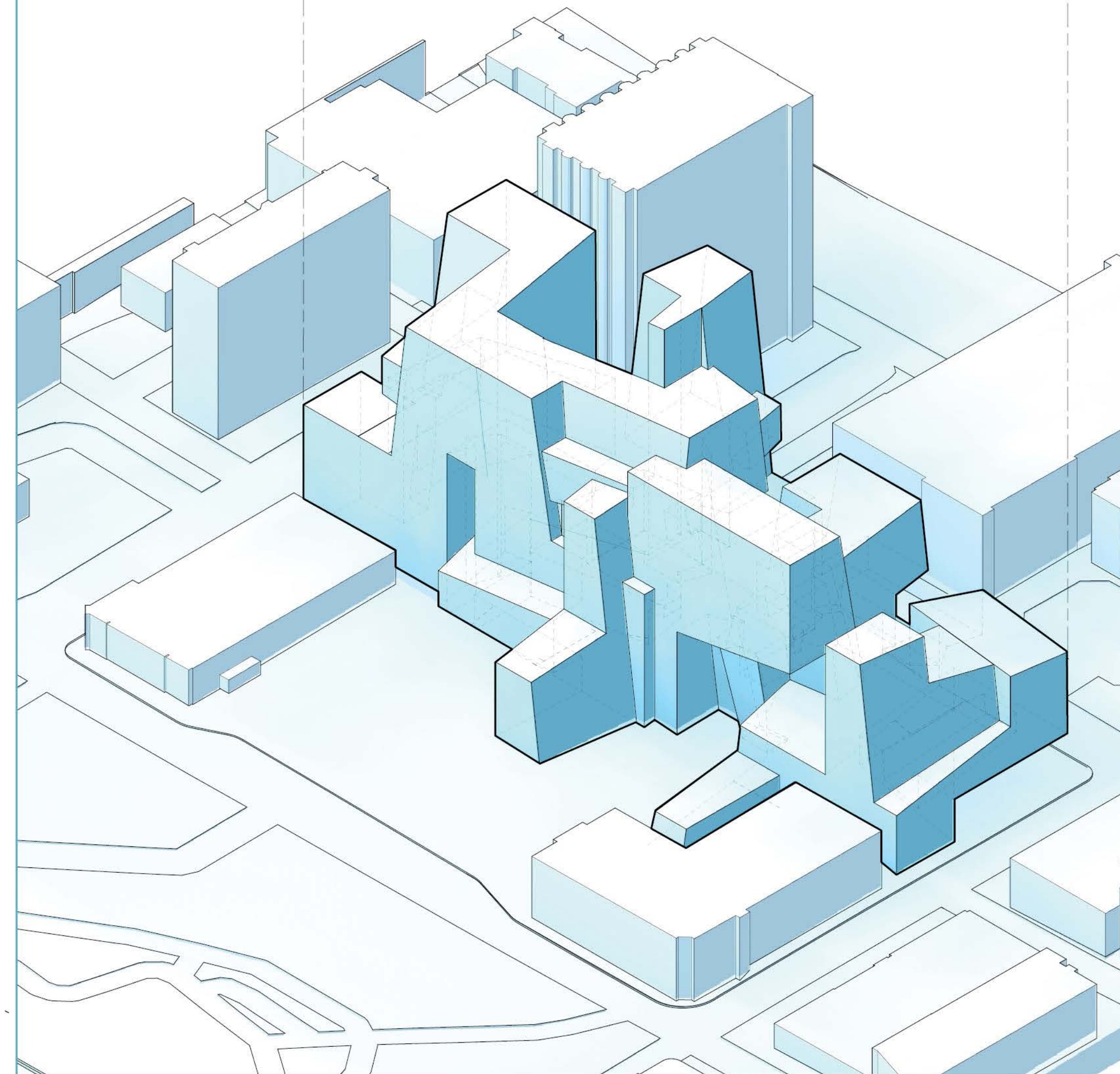
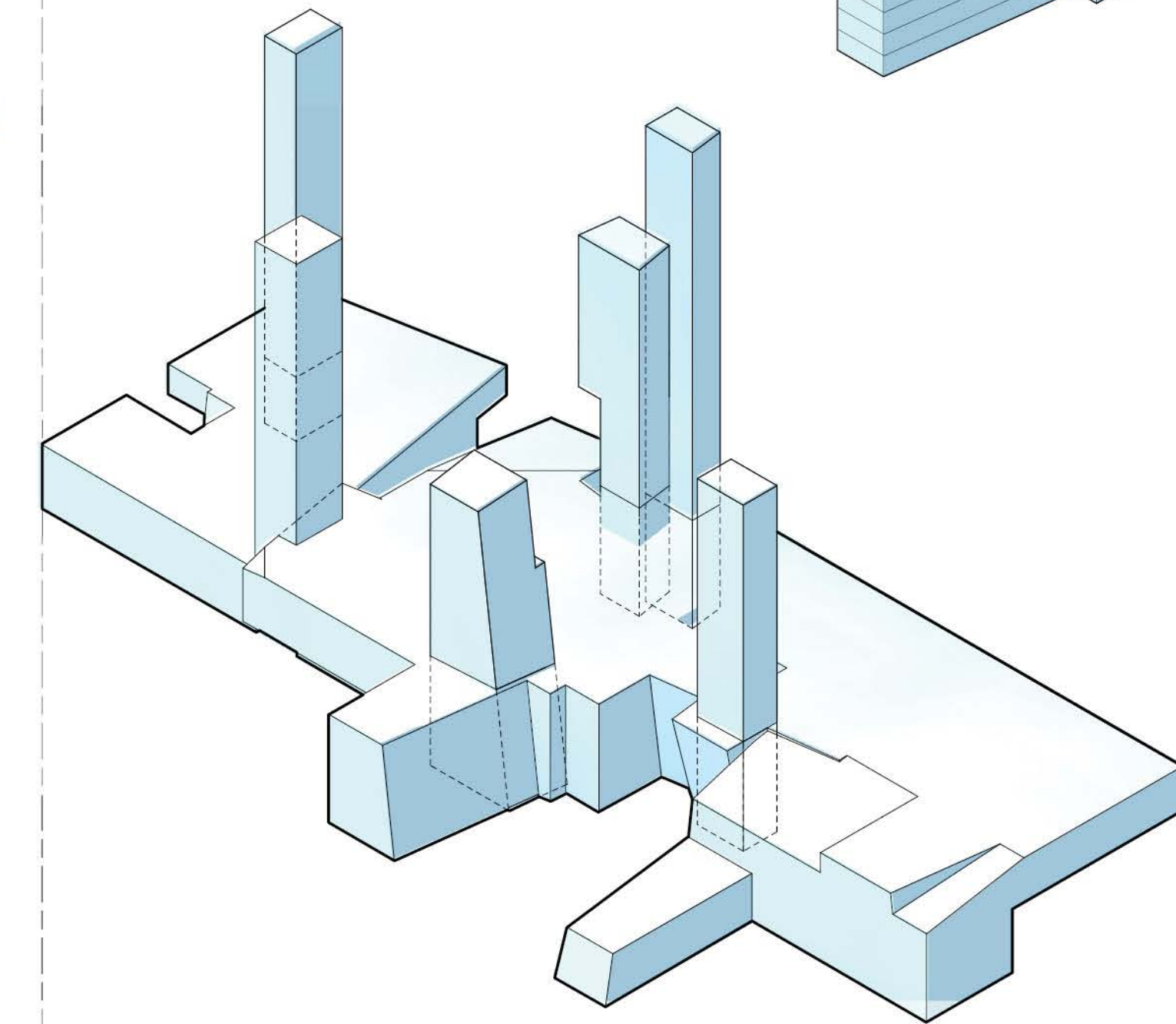
HOUSING PROGRAM

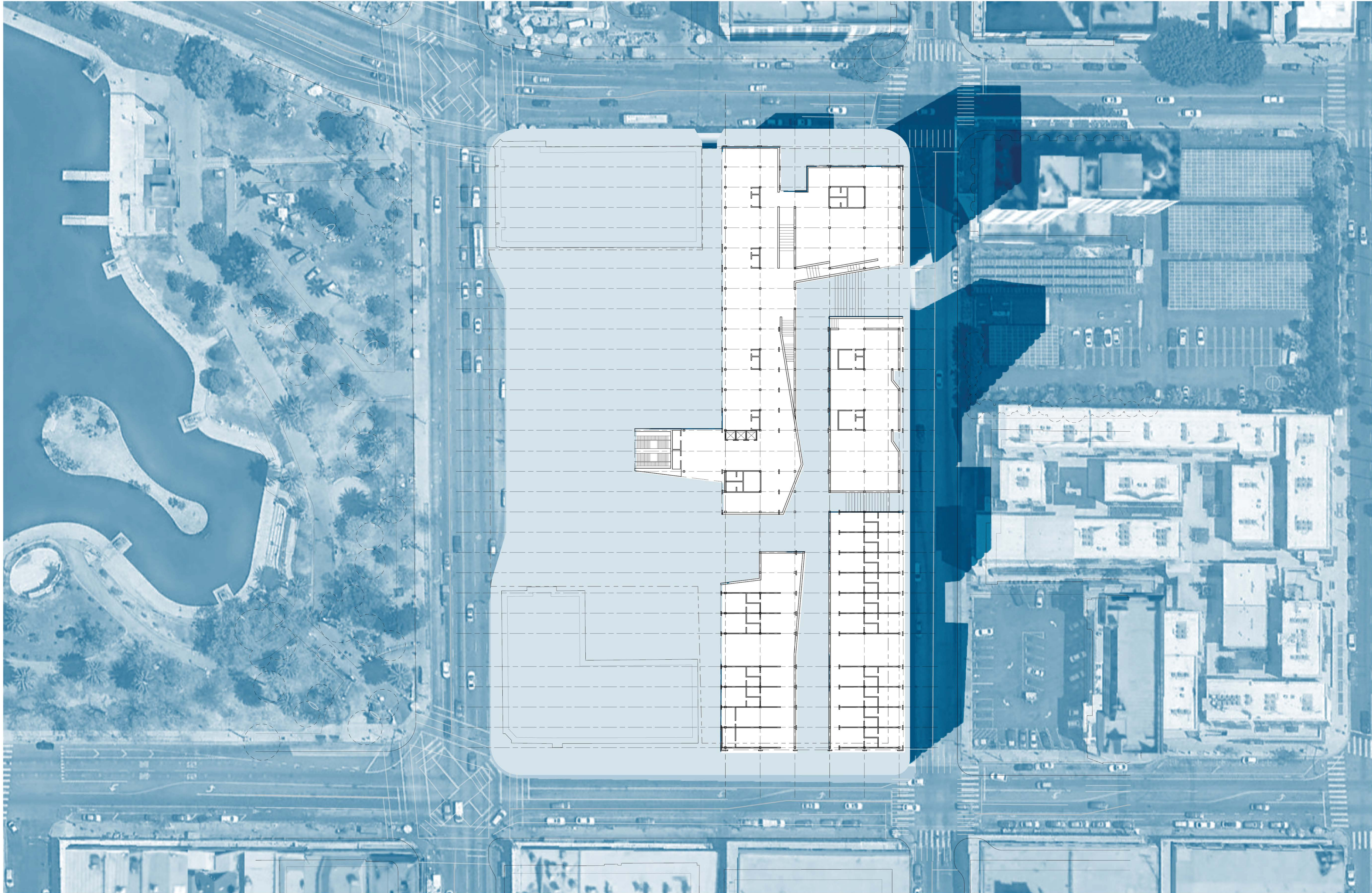
- A | HOTEL UNITS F3-5
- B | AFFORDABLE & MARKET RATE UNITS F7-16
- C | MICRO-UNITS F3-6
- D | TRANSITORY HOUSING F3-13



PUBLIC PROGRAM

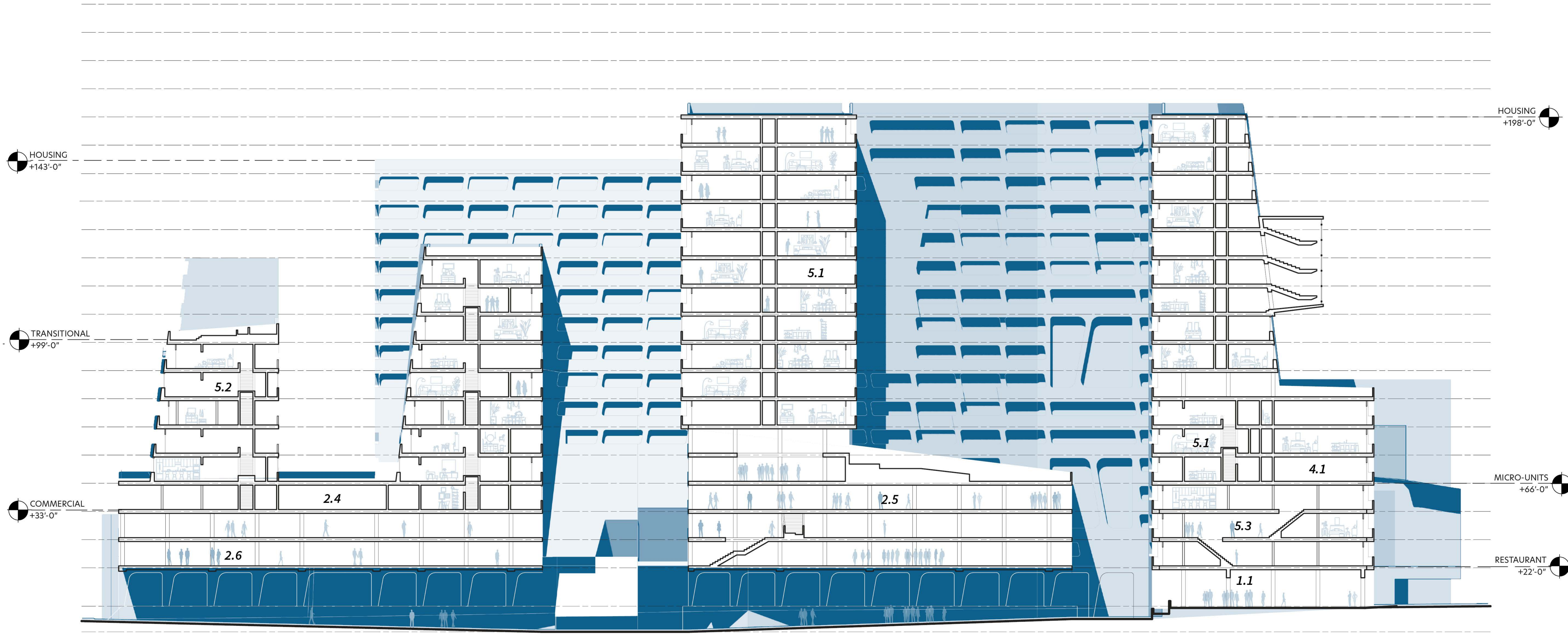
- RESTAURANT
- RETAIL
- HEALTH SERVICES
- CHILDCARE SERVICES
- WORKSPACES
- GALLERY
- THEATRE
- RECREATION CENTER



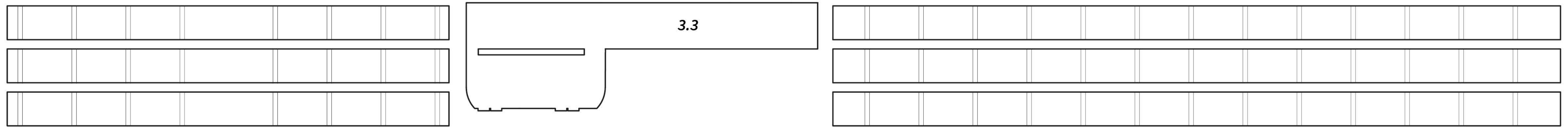




- 1.0 Commercial
 - 1.1 Food Hall
 - 1.2 Grocery and Market
 - 1.3 Local Stalls
 - 1.4 Anchor Retail
- 2.0 Public Services
 - 2.1 Legal Advising
 - 2.2 Citizenship Services
 - 2.3 Childcare Services
 - 2.4 We-Work Services
 - 2.5 Fitness Center
 - 2.6 Health Services
- 3.0 Logistics
 - 3.1 Restrooms
 - 3.2 Vendor Storage
 - 3.3 Metro
- 4.0 Hotel
 - 4.1 Boutique Hotel
 - 4.2 Transitory Hotel
- 5.0 Housing
 - 5.1 Market & Affordable Housing
 - 5.2 Transitional Family Units
 - 5.3 Co-Living
 - 5.4 Communal Space

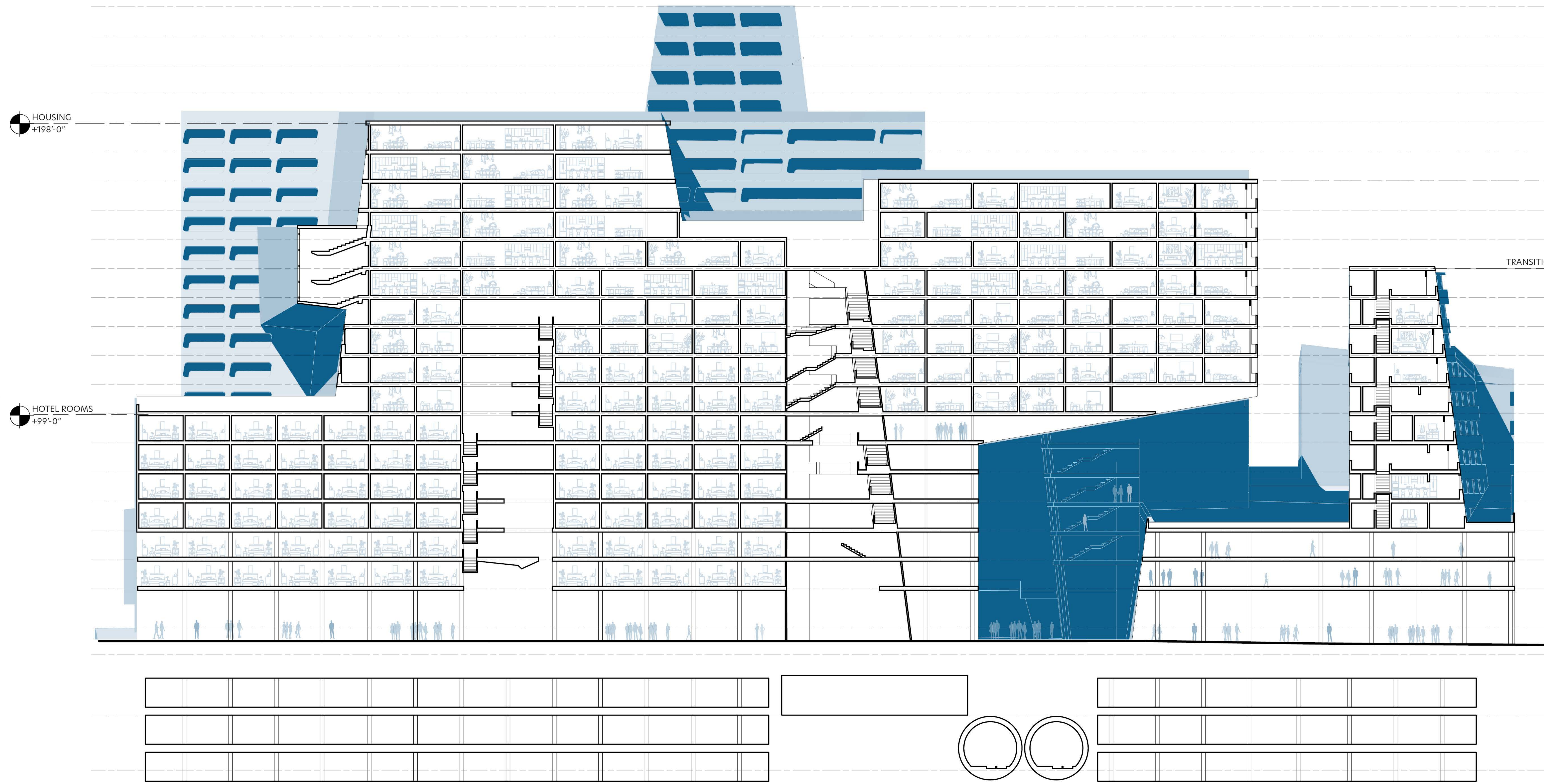


- 1.0 Commercial
 - 1.1 Food Hall
 - 1.2 Grocery and Market
 - 1.3 Local Stalls
 - 1.4 Anchor Retail
- 2.0 Public Services
 - 2.1 Legal Advising
 - 2.2 Citizenship Services
 - 2.3 Childcare Services
 - 2.4 We-Work Services
 - 2.5 Fitness Center
 - 2.6 Health Services
- 3.0 Logistics
 - 3.1 Restrooms
 - 3.2 Vendor Storage
 - 3.3 Metro
- 4.0 Hotel
 - 4.1 Boutique Hotel
 - 4.2 Transitory Hotel
- 5.0 Housing
 - 5.1 Market & Affordable Housing
 - 5.2 Transitional Family Units
 - 5.3 Co-Living
 - 5.4 Communal Space

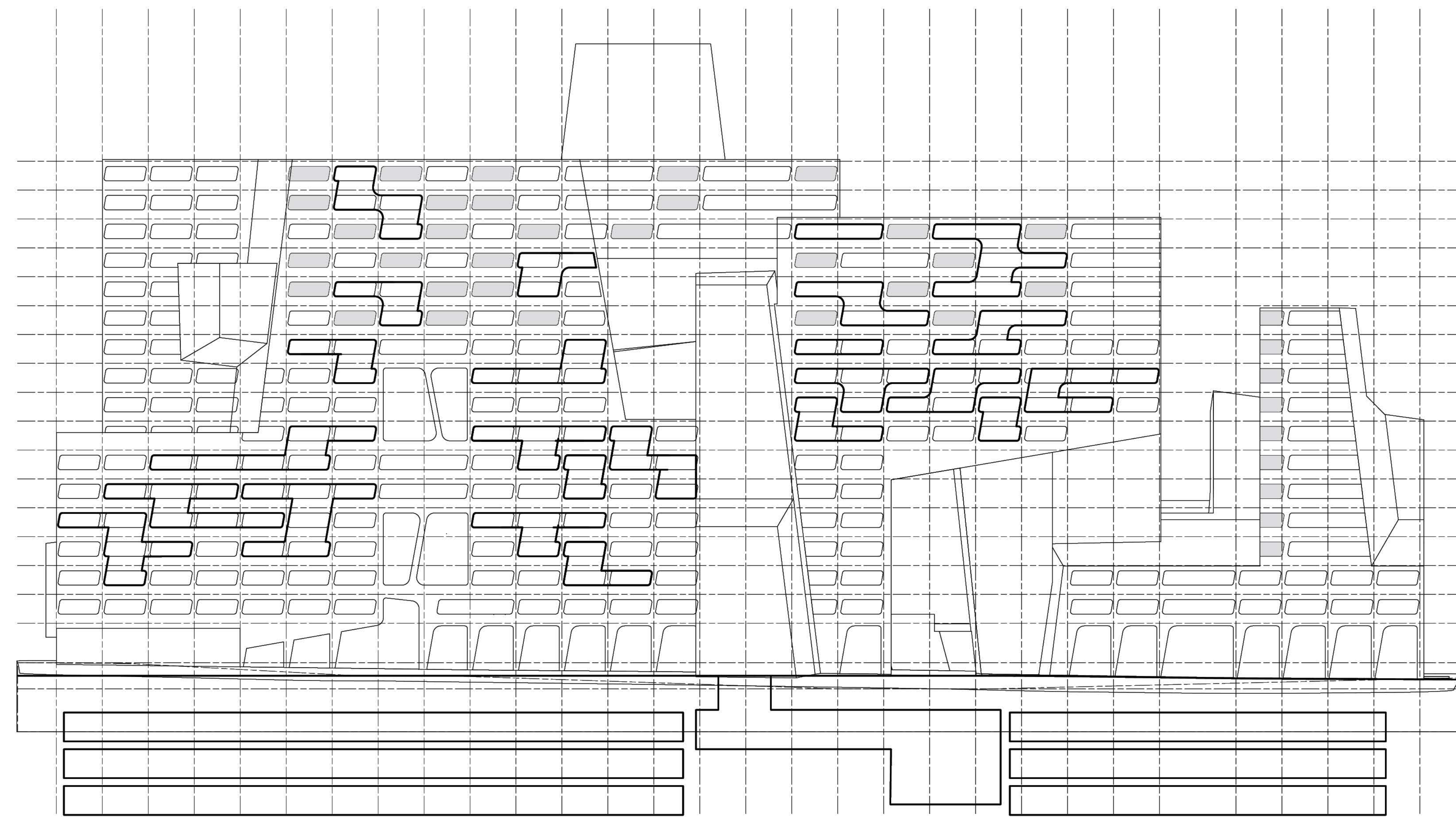




- 1.0 Commercial
 - 1.1 Food Hall
 - 1.2 Grocery and Market
 - 1.3 Local Stalls
 - 1.4 Anchor Retail
- 2.0 Public Services
 - 2.1 Legal Advising
 - 2.2 Citizenship Services
 - 2.3 Childcare Services
 - 2.4 We-Work Services
 - 2.5 Fitness Center
 - 2.6 Health Services
- 3.0 Logistics
 - 3.1 Restrooms
 - 3.2 Vendor Storage
 - 3.3 Metro
- 4.0 Hotel
 - 4.1 Boutique Hotel
 - 4.2 Transitory Hotel
- 5.0 Housing
 - 5.1 Market & Affordable Housing
 - 5.2 Transitional Family Units
 - 5.3 Co-Living
 - 5.4 Communal Space



- 1.0 Commercial
 - 1.1 Food Hall
 - 1.2 Grocery and Market
 - 1.3 Local Stalls
 - 1.4 Anchor Retail
- 2.0 Public Services
 - 2.1 Legal Advising
 - 2.2 Citizenship Services
 - 2.3 Childcare Services
 - 2.4 We-Work Services
 - 2.5 Fitness Center
 - 2.6 Health Services
- 3.0 Logistics
 - 3.1 Restrooms
 - 3.2 Vendor Storage
 - 3.3 Metro
- 4.0 Hotel
 - 4.1 Boutique Hotel
 - 4.2 Transitory Hotel
- 5.0 Housing
 - 5.1 Market & Affordable Housing
 - 5.2 Transitional Family Units
 - 5.3 Co-Living
 - 5.4 Communal Space



Residential Unit
Floors 8 to 22

Hotel Units
Floors 2 to 7

Ground Floor

