

PUBLIC PLAZA PLINTHY PLACE

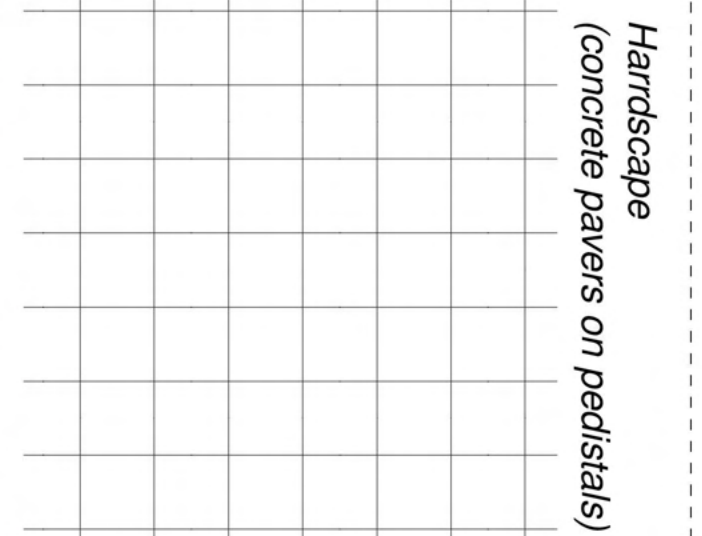
plinth vs core

The public plaza cuts into and folds out of the street level plaza, offering store front spaces for informal public markets as well as public event spaces, cinema, and some fire pupusas.

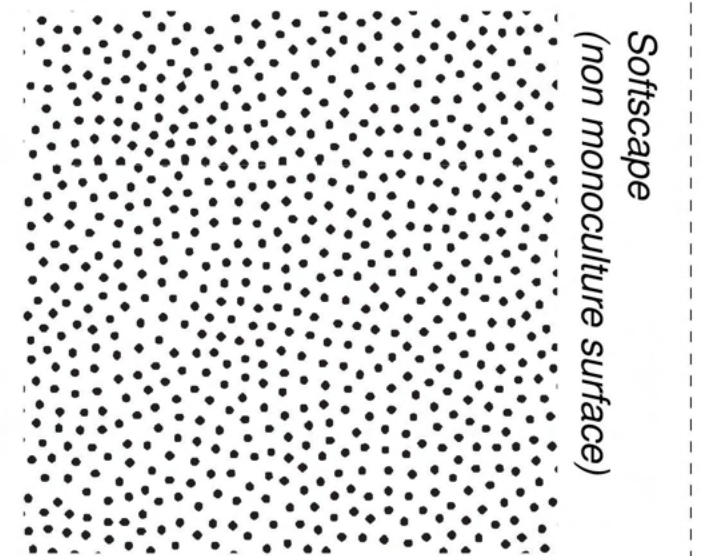
I'm really just here for the Pupusas.

The layers of horizontal and oblique circulation create a gradient from public to private, with moments to pause along the way.

The FOUR central core towers rise up out of the plinth. Where they meet the hyper articulated surface subtractions and additions dismantle the hard barrier between public plaza and private residents.



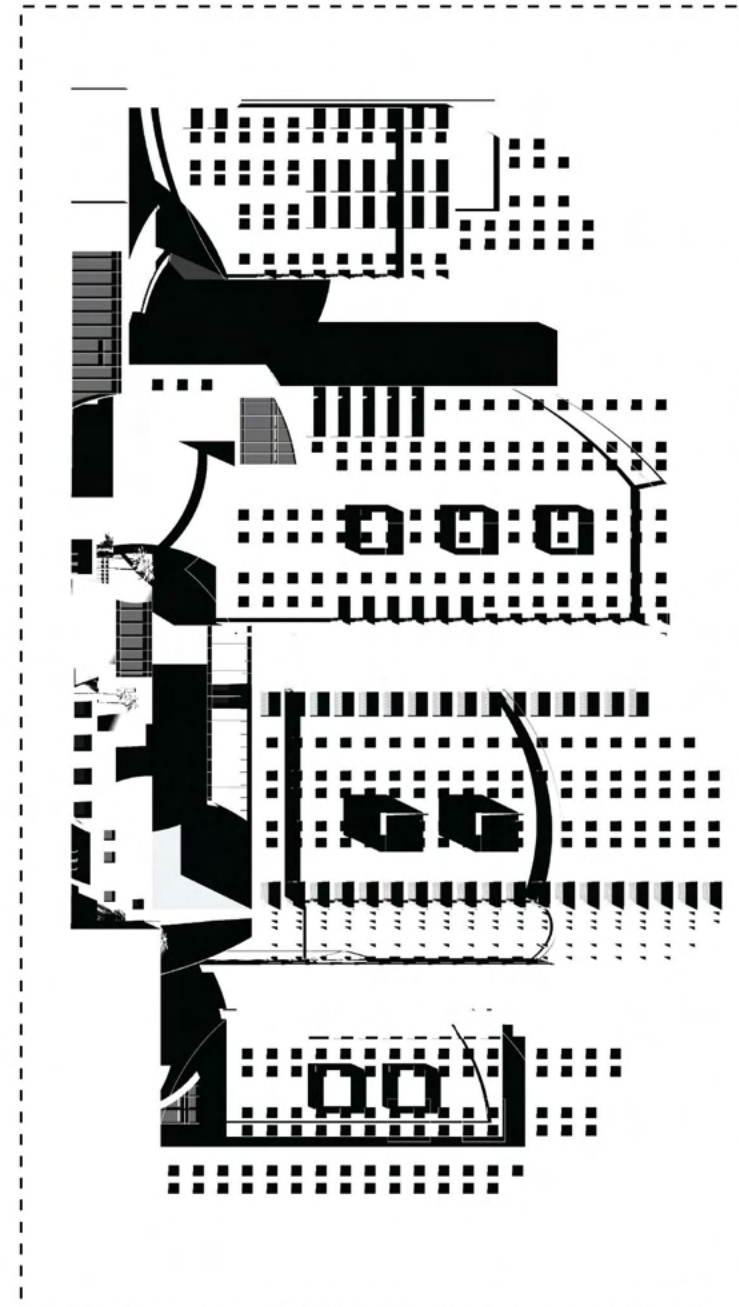
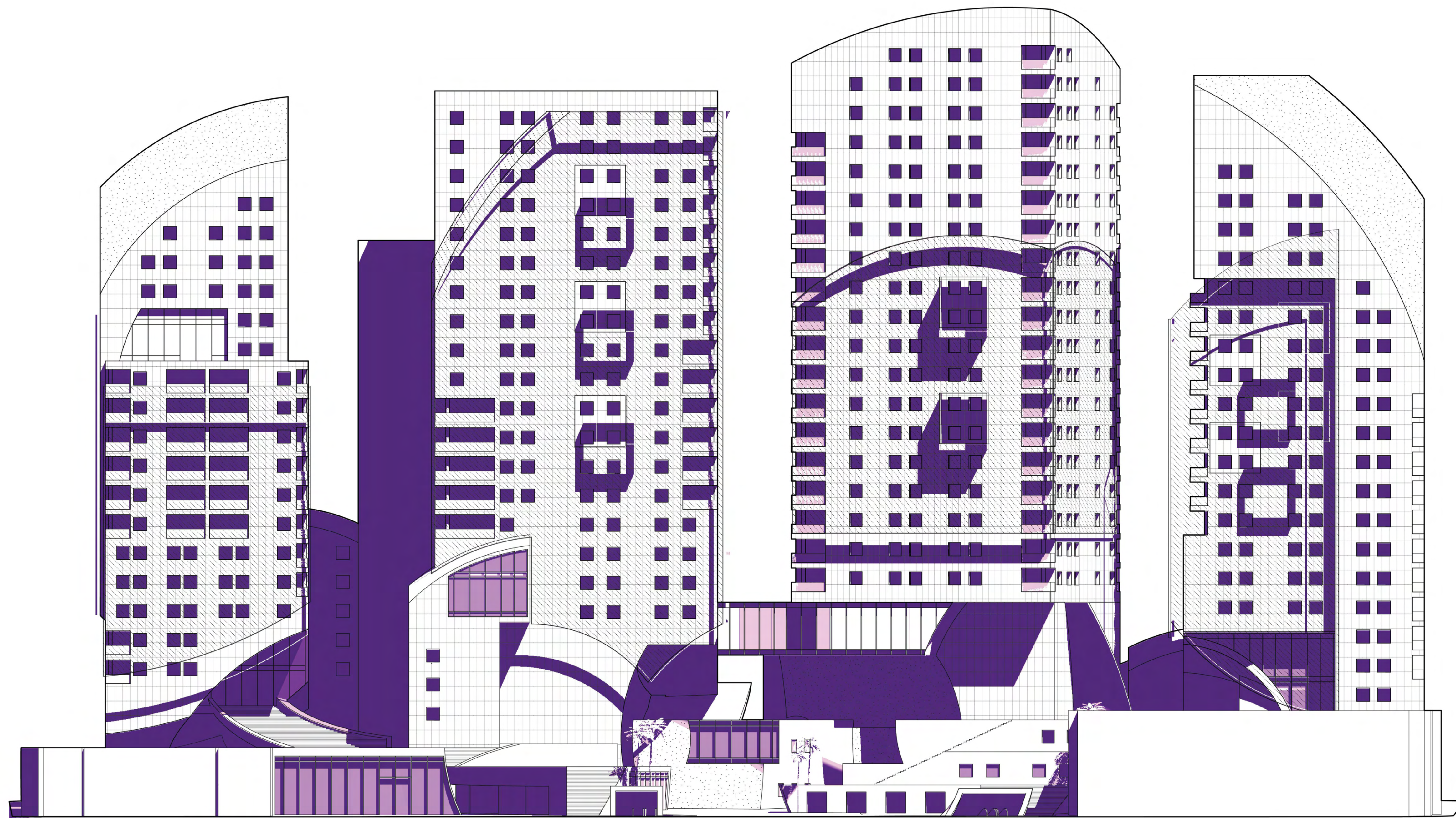
Hardscape
(concrete pavers on pedestals)



Softscape
(non monoculture surface)



Perforated Screen
(Western exposure+Formal)

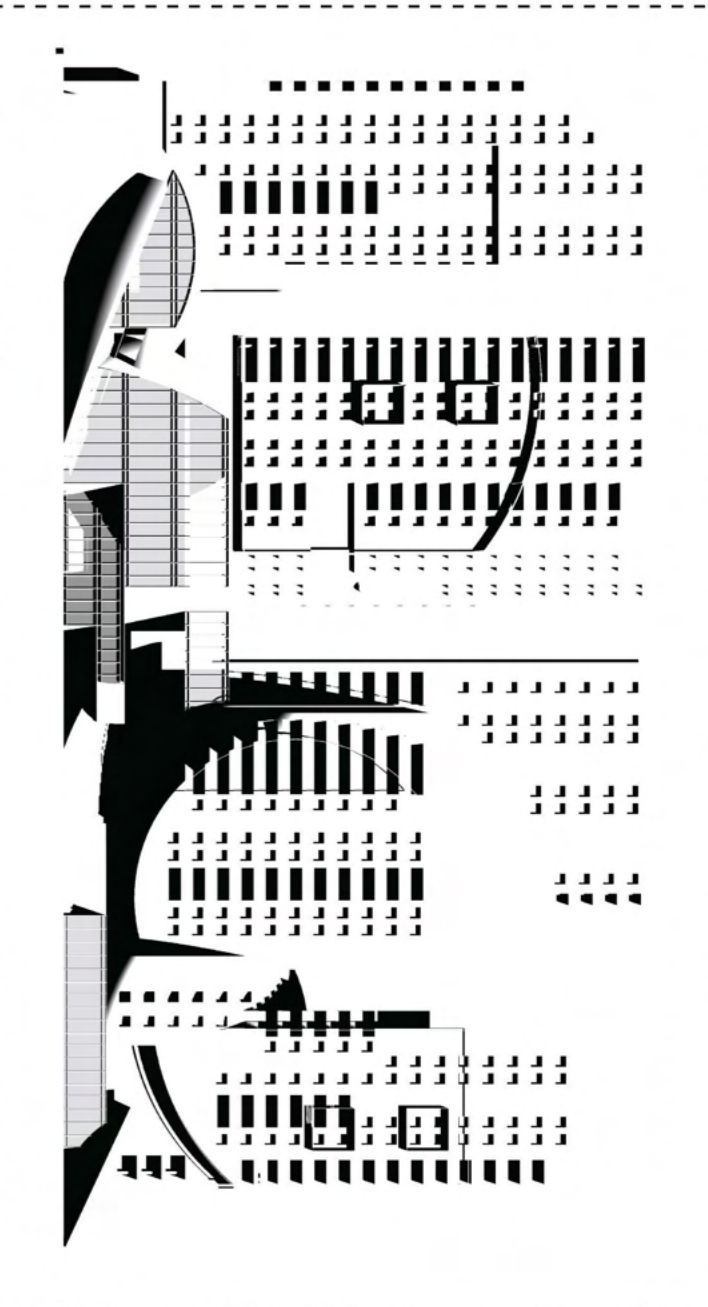
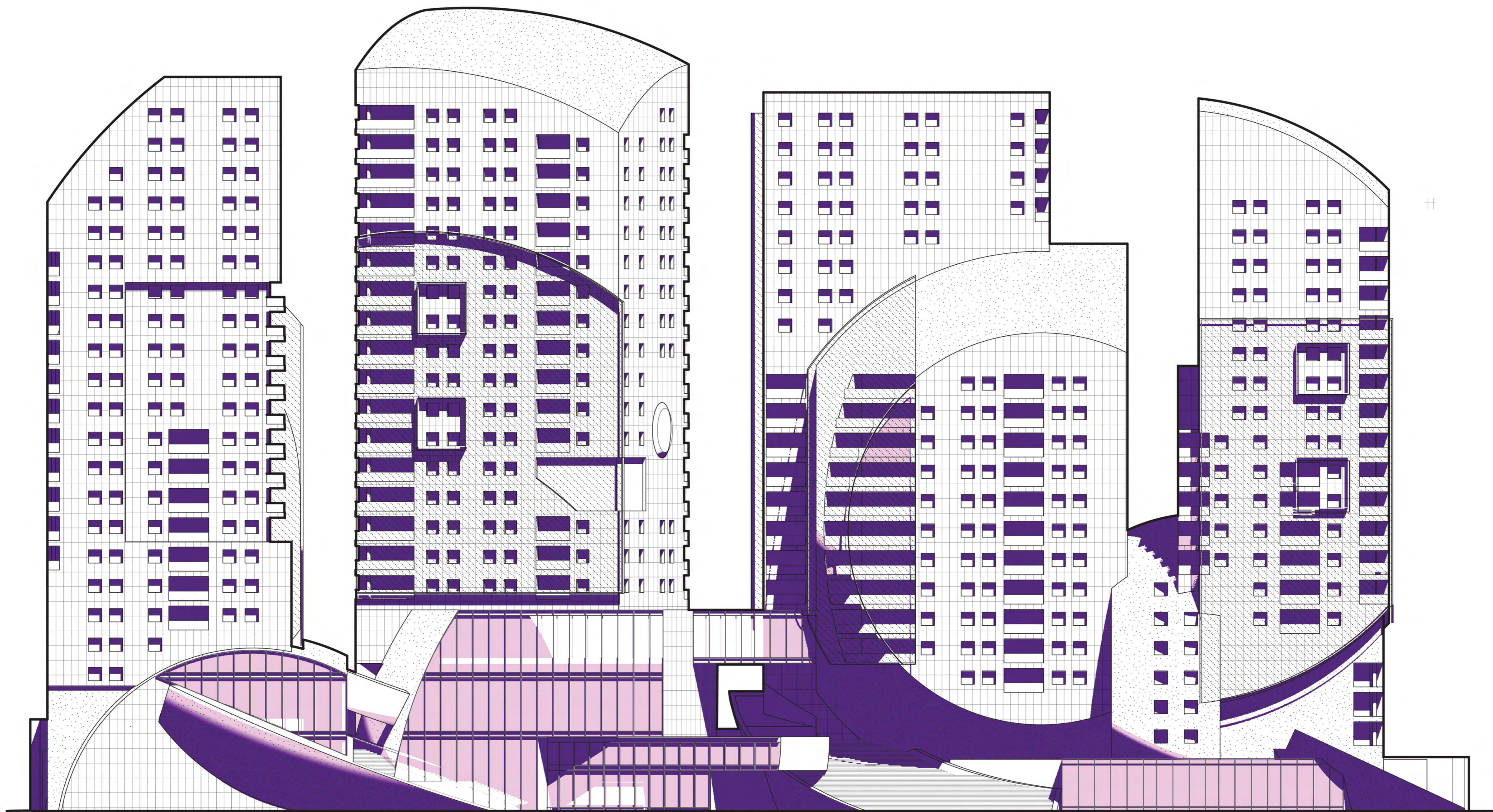


Figural Forms

The cores are wrapped by a shell originating from the same spherical geometry of the plinths. These 4 cores then become 4 figures, some tall others short, who address one another as well as the urban skylines beyond.

West Elevation (from the park)

1/32"=1'-0"

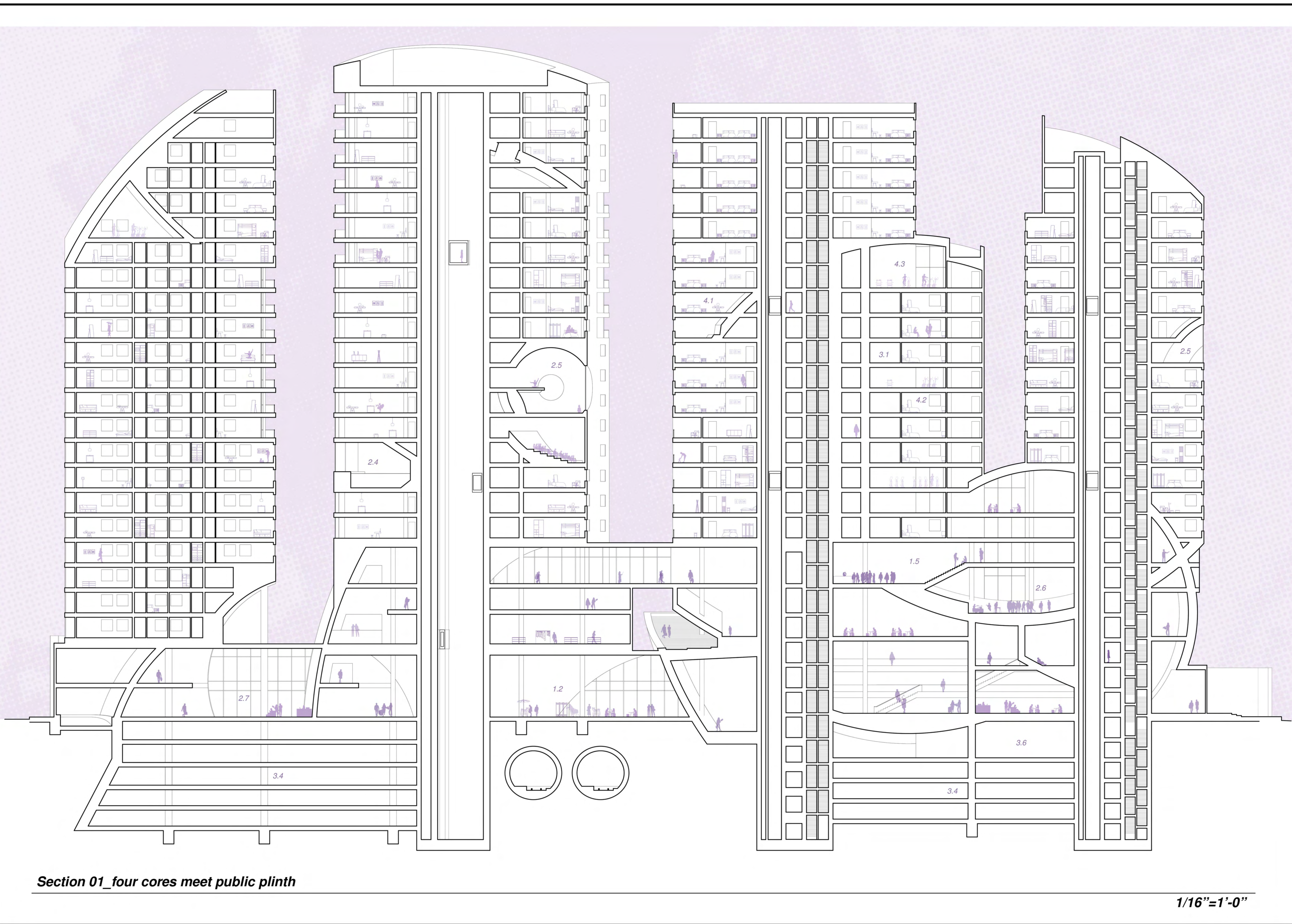


Figural Forms

The cores are wrapped by a shell originating from the same spherical geometry of the plinths. These 4 cores then become 4 figures, some tall others short, who address one another as well as the urban skylines beyond.

East Elevation (from westlake)

1/32"=1'-0"



rogram

- 1_Comercial
 - 1.1_non-profit offices
 - 1.2_coffee shop
 - 1.3_local stalls
 - 1.4_yoga studio
 - 1.5_hip and cool bar
 - 1.6_co-work space
 - 1.7_cineplex
 - 1.8_Pupuseria Salvadoreno
- 2_Services+public works
 - 2.1_metro station
 - 2.2_health clinic
 - 2.3_social services office
 - 2.4_public baths
 - 2.5_sound bath
 - 2.6_community event space
 - 2.7_Lobby
 - 2.8_Public Restrooms
- 3_Logistics
 - 3.1_Custodial Storage
 - 3.2_Mail Room
 - 3.3>Loading
 - 3.4_Parking
 - 3.5_Resident Storage
 - 3.6_Mechanical
- 4_Hotel
 - 4.1_boutique hotel
 - 4.2_transitory hotel
 - 4.3_Recreation
- 5_HOUSING
 - 5.1_mrkt + affordable housing
 - 5.2_transitional family units
 - 5.3_CoLiving
 - 5.4_Communal Space
 - 5.5_Laundry

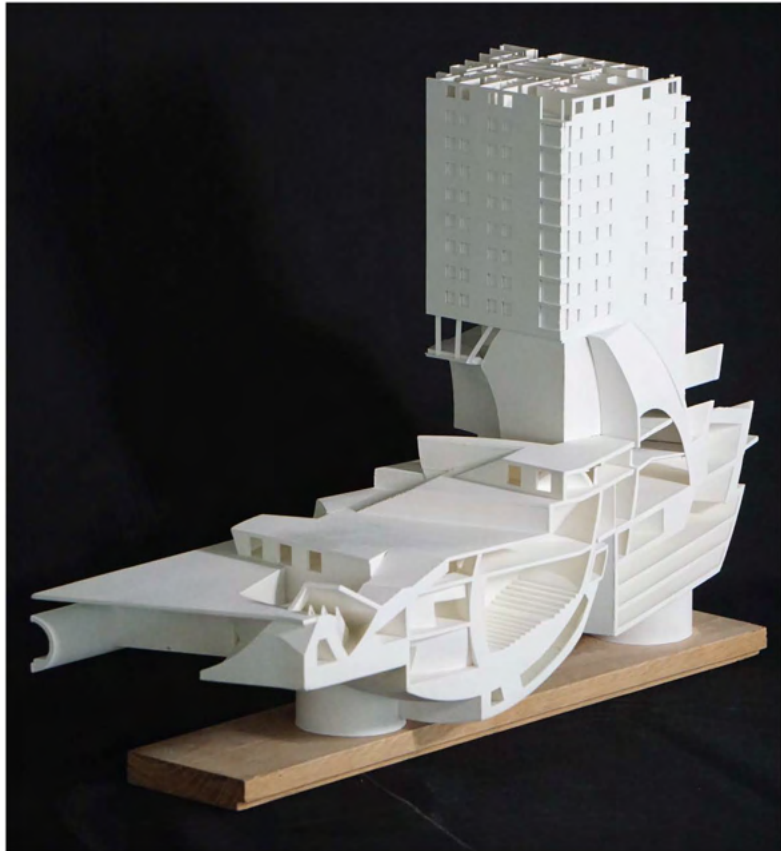
Across and Up

the occupiable plinth holds public programs for gathering, meeting and focusing. The spherical geometry used to articulate the surface of the plaza climbs up the cores and acts as the shell for the public program above. Tracery from geometric intersections create cavities of unanticipated spatial encounters.

spaces, nooks, and thresholds.

Section 01_four cores meet public plinth

1/16"=1'-0"

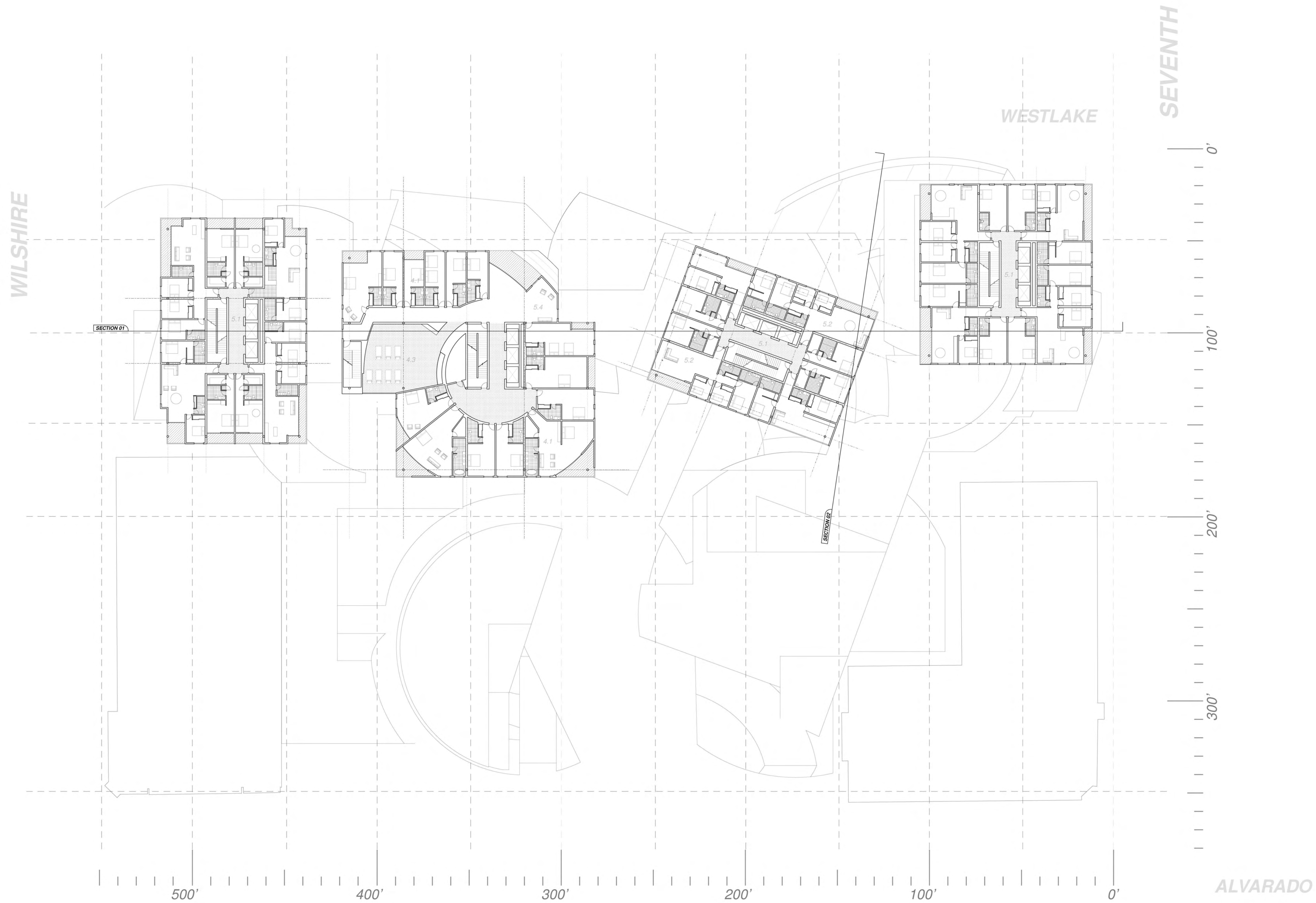


We still make models

A 1/16th inch scale chunk model digs deeply into the connection between the level of the site and the various terraces that rise above it. This new topography at the site level acts to draw the public across and up towards the private circulation cores.



*purple beams out of a blue tube.
plinths of white plaster.*



P is for program

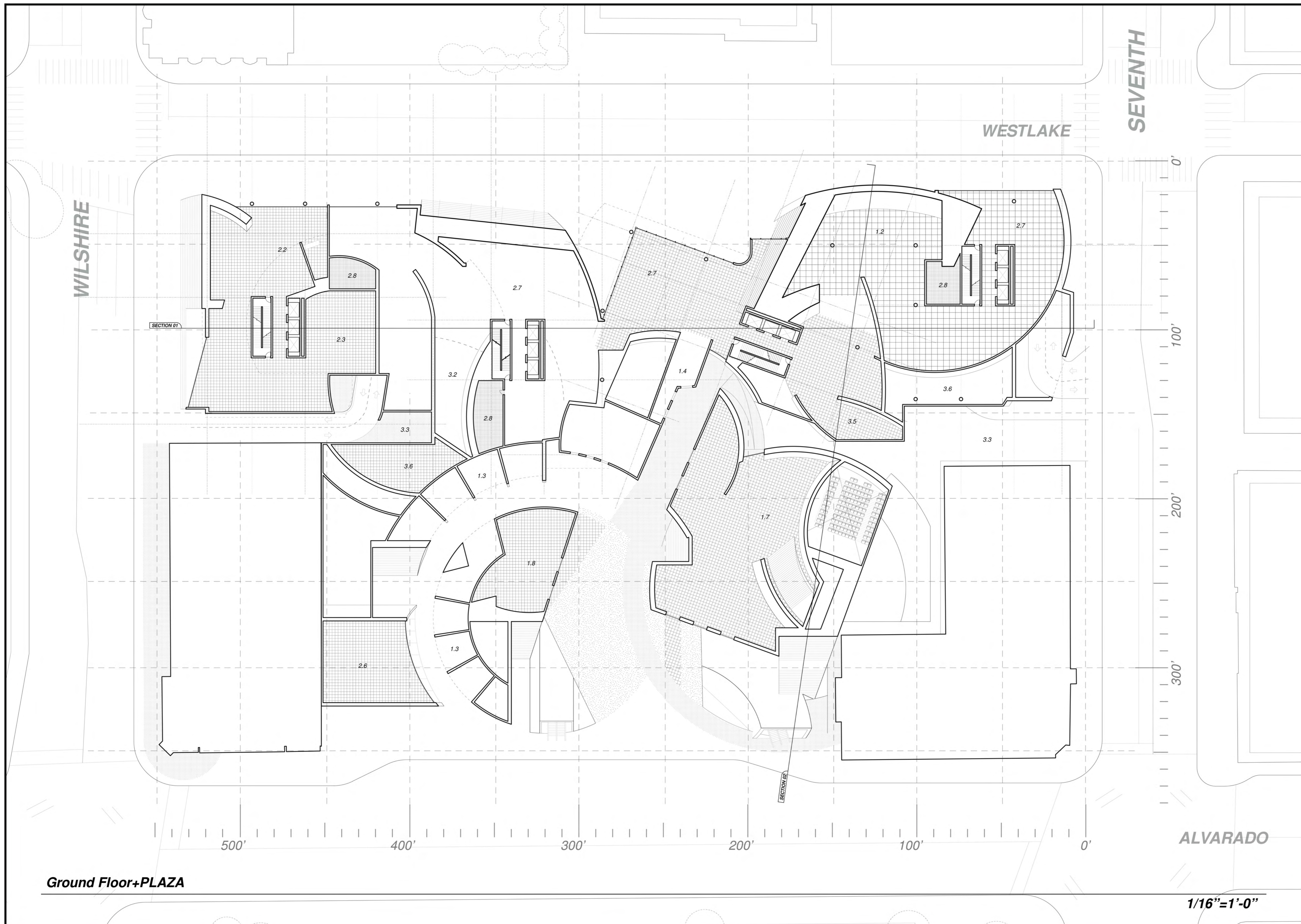
- 1_Comercial
 - 1.1_non-profit offices
 - 1.2_coffee shop
 - 1.3_local stalls
 - 1.4_yoga studio
 - 1.5_hip and cool bar
 - 1.6_co-work space
 - 1.7_cineplex
 - 1.8_Pupuseria Salvadoreno
- 2_Services+public works
 - 2.1_metro station
 - 2.2_health clinic
 - 2.3_social services office
 - 2.4_public baths
 - 2.5_sound bath
 - 2.6_community event space
 - 2.7_Lobby
 - 2.8_Public Restrooms
- 3_Logistics
 - 3.1_Custodial Storage
 - 3.2_Mail Room
 - 3.3>Loading
 - 3.4_Parking
 - 3.5_Resident Storage
 - 3.6_Mechanical
- 4_Hotel
 - 4.1_boutique hotel
 - 4.2_transitory hotel
 - 4.3_Recreation
- 5_HOUSING
 - 5.1_mrkt + affordable housing
 - 5.2_transitional family units
 - 5.3_CoLiving
 - 5.4_Communal Space
 - 5.5_Laundry

Units

are organized efficiently around a central (for the most part) Core. There are 4 cores, thus 4 towers of private units. these towers have different proportions of shells which squeezes and shifts the proportions slightly between the towers. this allows the layout in each tower to yeild similar, but scaled versions of each type of unit. This would allow for floors to have both affordable, transitional, and market rate all mixed together.

Ex. All 3 bedroom units get a similar treatment but at a different scale and ratio between towers.

The hard shell of the project is chipped away when outdoor patios breach the surface where larger units gain private outdoor space.



P is for program

- 1_Comercial
 - 1.1_non-profit offices
 - 1.2_coffee shop
 - 1.3_local stalls
 - 1.4_yoga studio
 - 1.5_hip and cool bar
 - 1.6_co-work space
 - 1.7_cineplex
 - 1.8_Pupuseria Salvadoreno
- 2_Services+public works
 - 2.1_metro station
 - 2.2_health clinic
 - 2.3_social services office
 - 2.4_public baths
 - 2.5_sound bath
 - 2.6_community event space
 - 2.7_Lobby
 - 2.8_Public Restrooms
- 3_Logistics
 - 3.1_Custodial Storage
 - 3.2_Mail Room
 - 3.3>Loading
 - 3.4_Parking
 - 3.5_Resident Storage
 - 3.6_Mechanical
- 4_Hotel
 - 4.1_boutique hotel
 - 4.2_transitory hotel
 - 4.3_Recreation
- 5_HOUSING
 - 5.1_mrkt + affordable housing
 - 5.2_transitional family units
 - 5.3_CoLiving
 - 5.4_Communal Space
 - 5.5_Laundry

Get in at the ground floor

the plinth of the project is as articulated inside as it is on the surface. Not merely solid, this plan reveals the occupiable volumes this colliding geometry froms.

Programatically the ground floor creates a gradient from public to the access of the cores where it shifts towards private program.

*Horizontal for the public.
Vertical for the private.
Articulation between.*



rogram

- 1_Comercial
 - 1.1_non-profit offices
 - 1.2_coffee shop
 - 1.3_local stalls
 - 1.4_yoga studio
 - 1.5_hip and cool bar
 - 1.6_co-work space
 - 1.7_cineplex
 - 1.8_Pupuseria Salvadoreno
- 2_Services+public works
 - 2.1_metro station
 - 2.2_health clinic
 - 2.3_social services office
 - 2.4_public baths
 - 2.5_sound bath
 - 2.6_community event space
 - 2.7_Lobby
 - 2.8_Public Restrooms
- 3_Logistics
 - 3.1_Custodial Storage
 - 3.2_Mail Room
 - 3.3>Loading
 - 3.4_Parking
 - 3.5_Resident Storage
 - 3.6_Mechanical
- 4_Hotel
 - 4.1_boutique hotel
 - 4.2_transitory hotel
 - 4.3_Recreation
- 5_HOUSING
 - 5.1_mrkt + affordable housing
 - 5.2_transitional family units
 - 5.3_CoLiving
 - 5.4_Communal Space
 - 5.5_Laundry

thresholds and layers

An open air plaza slowly builds into and eats away at the base of the residential tower. This articulation of the plaza creates layers of spaces and thresholds between public, comercial, and private zones.

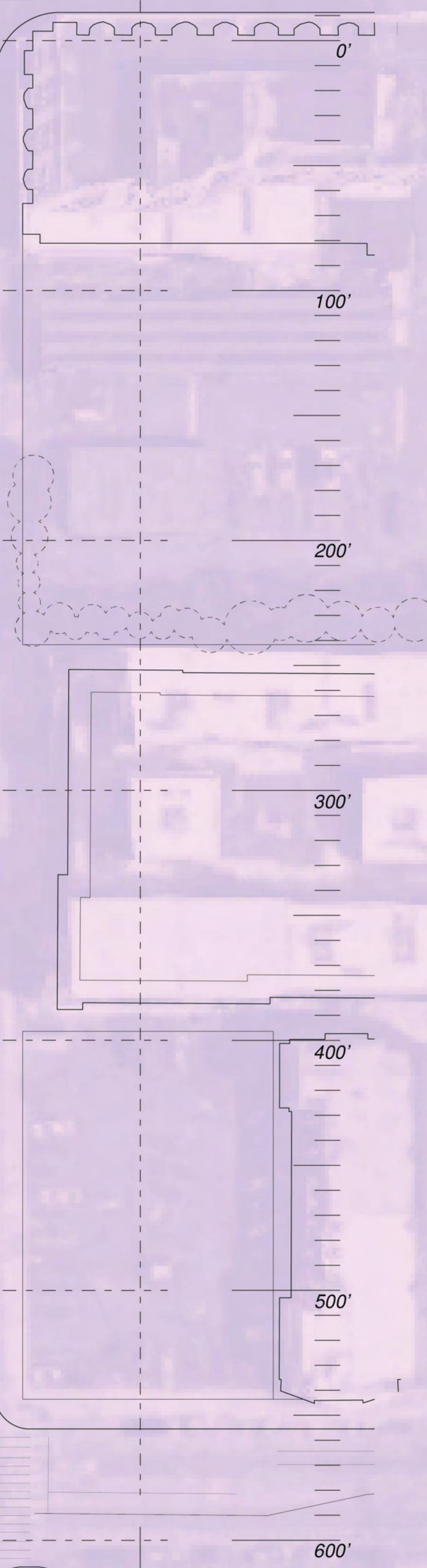
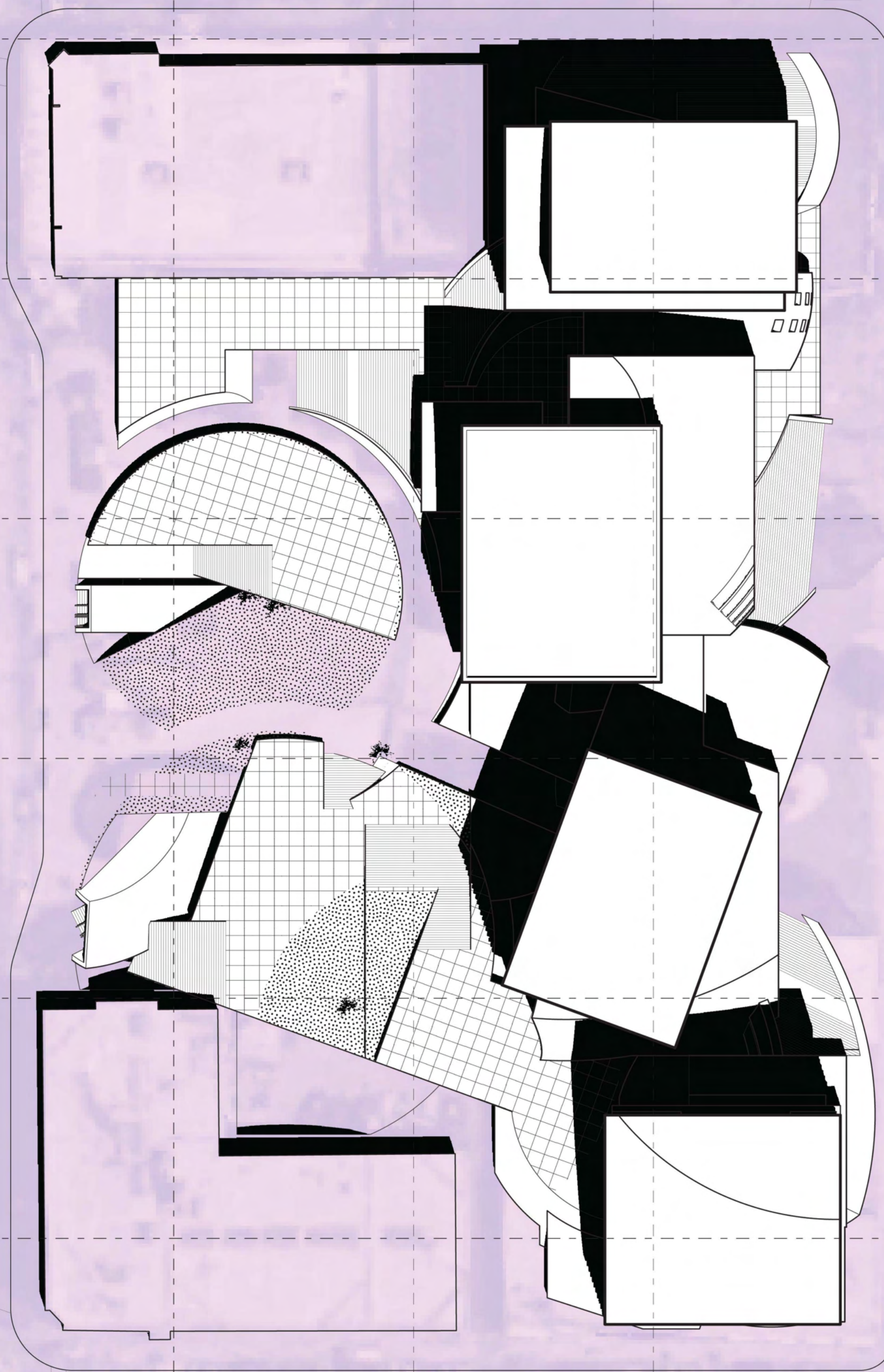
Note: Metro as public_Horizontal
Core/Tower as private_Vertical
Plaza as gradient

ALVARADO

WILSHIRE ←

SEVENTH

WESTLAKE

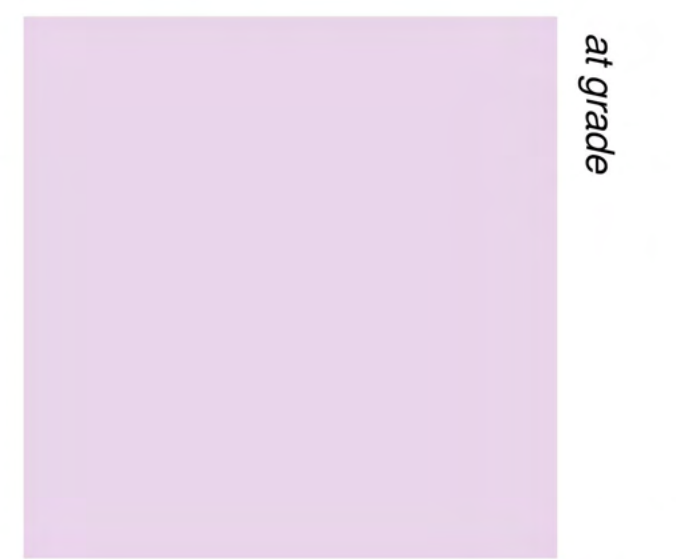
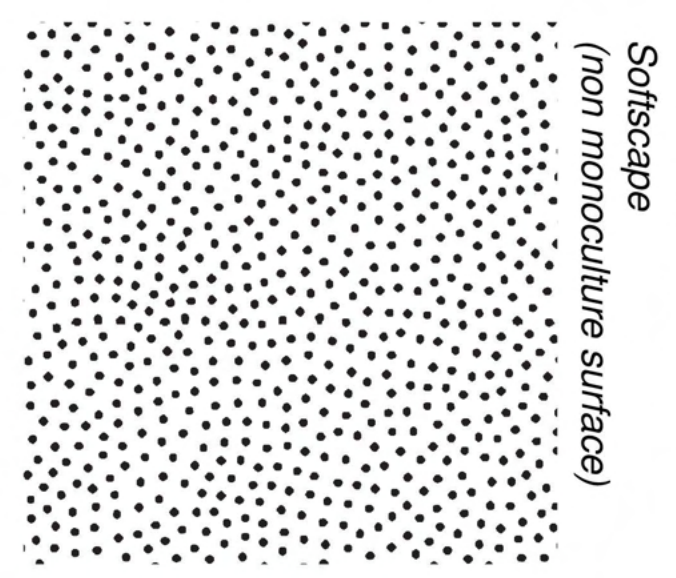
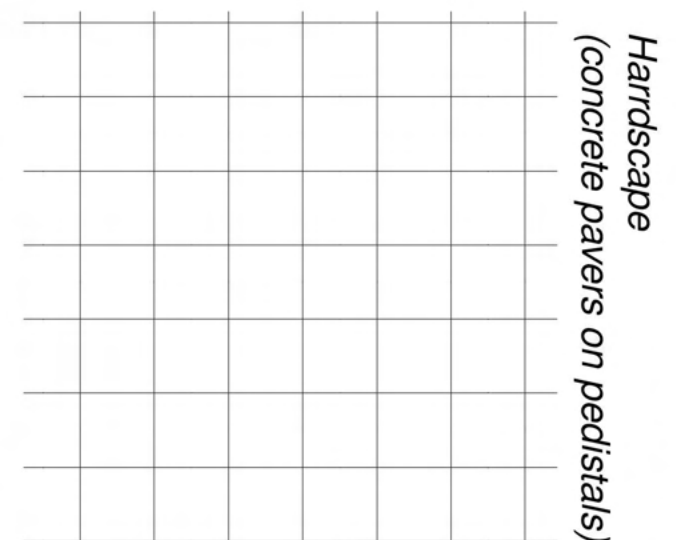


Urban Contrapposto

Shifting weight to the east end of the site, the plinth props the project up into a broken slab of 4 towers.

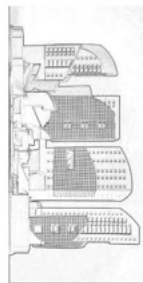
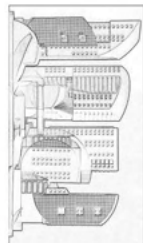
The Plinth aims to create an invitation at the street level. Entrances to public program as well as exterior public spaces in the plaza and on Westlake create a lively circulatory space where public space transitions into private space.

Parking and loading happen off of Wilshire and Seventh, leaving Alvarado and Westlake as pedestrian zones on already walkable lively streets.



Roof Plan_SITE AND CONTEXT

1/16"=1'-0"



a digital physical model

Analog modeling methods were used to develop facade and elevational character. There's no substitute for the real thing.

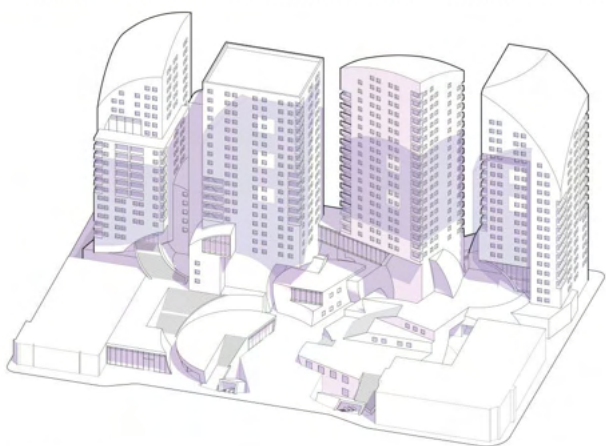
While at a low resolution it offered a moment of reflection on the plaza connection to the towers before finalizing and developing the moves.

PHYSICAL STUDY MODEL

1/32"=1'-0"



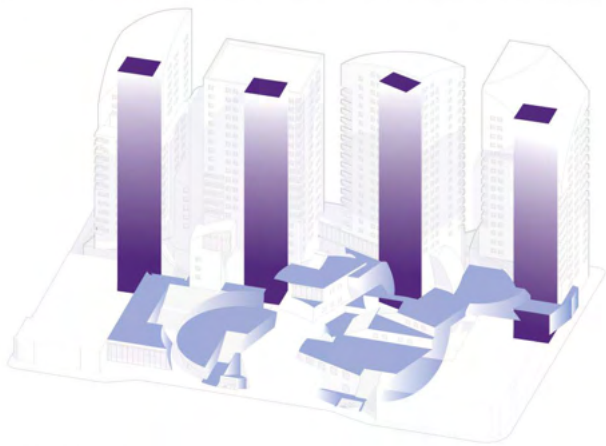
p for plinth



Axonometric_PUBLIC PLAZA PLINTHY PLACE



Introduce topography_HYPER ARTICULATE



plinth AND core_a match made in heaven