

2021.06.07 - 22:03

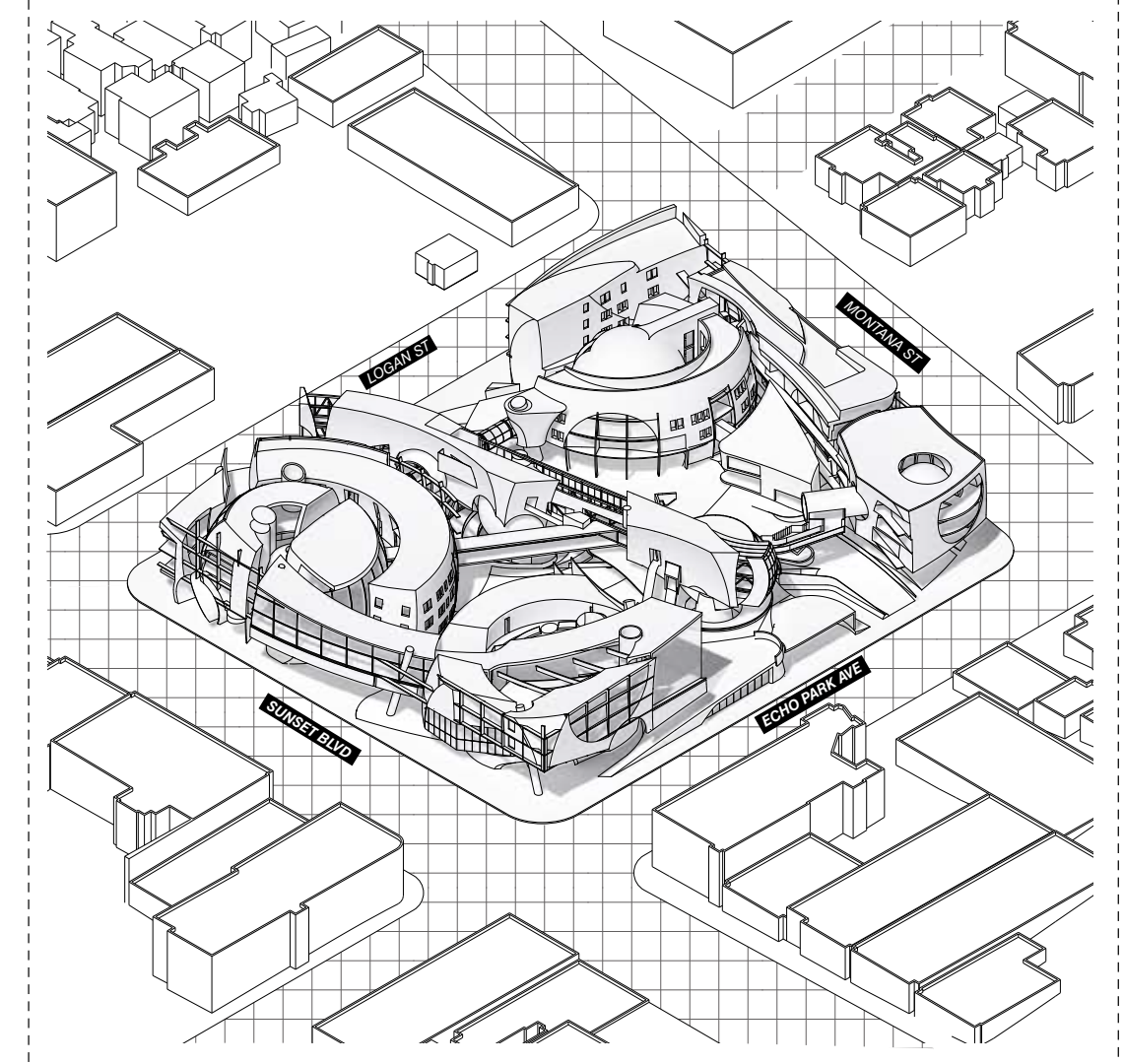
Site Plan

[A.02]



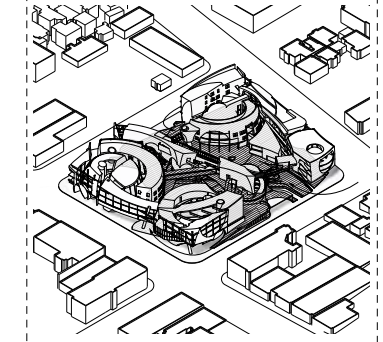
Site Axonometric

[A.02]



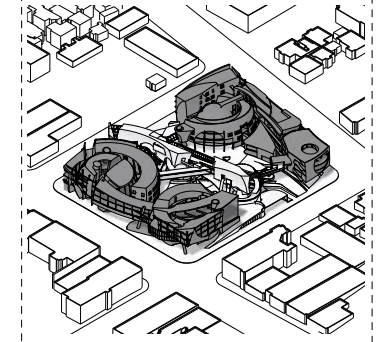
Site Elevated Plaza

[A.04]



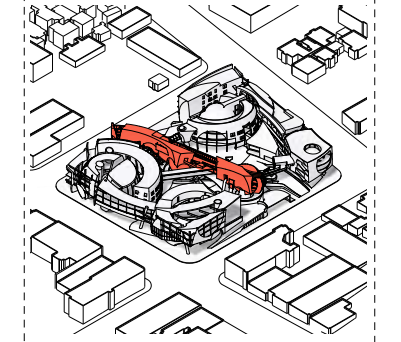
Site Organization

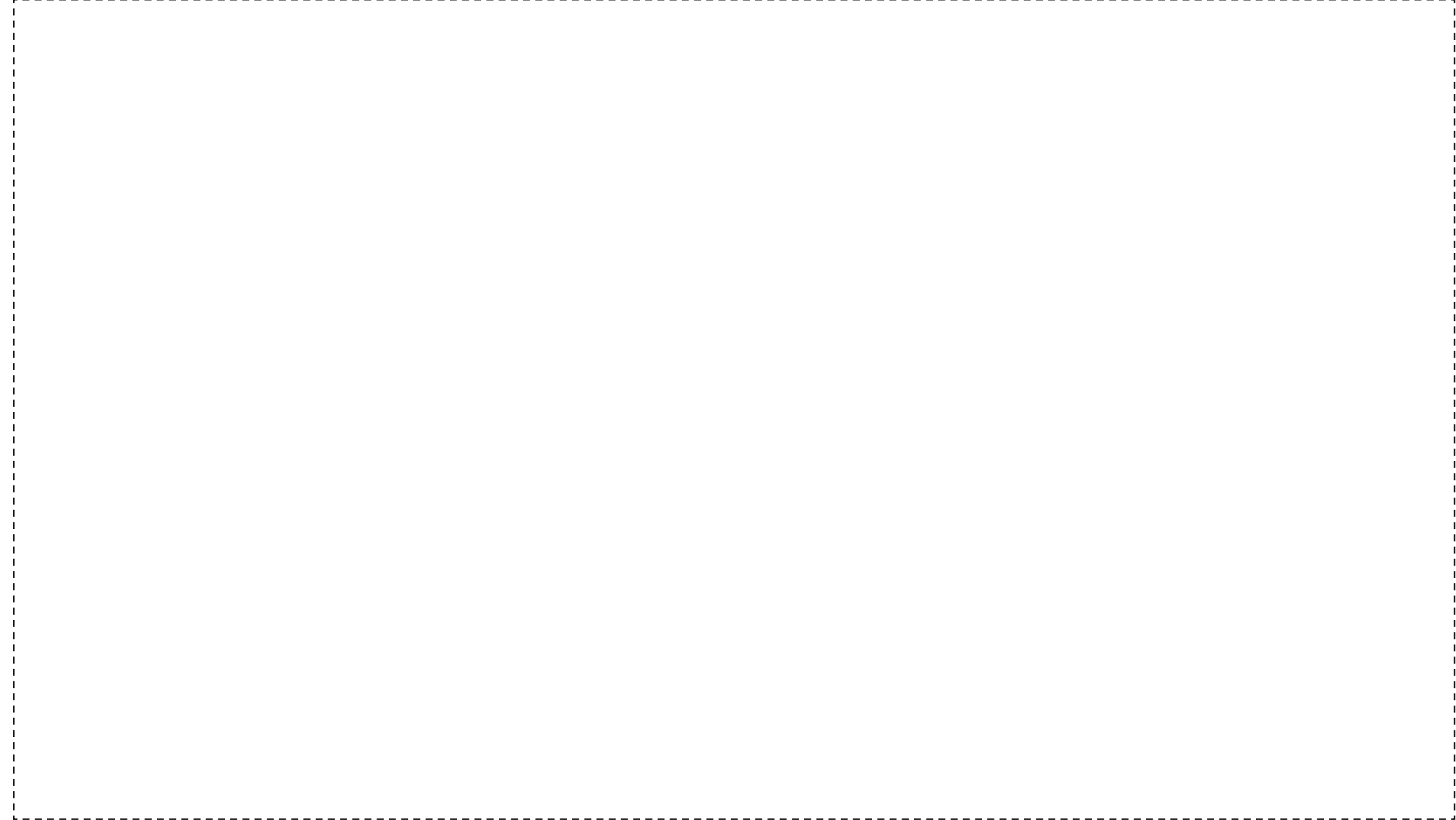
[A.02]



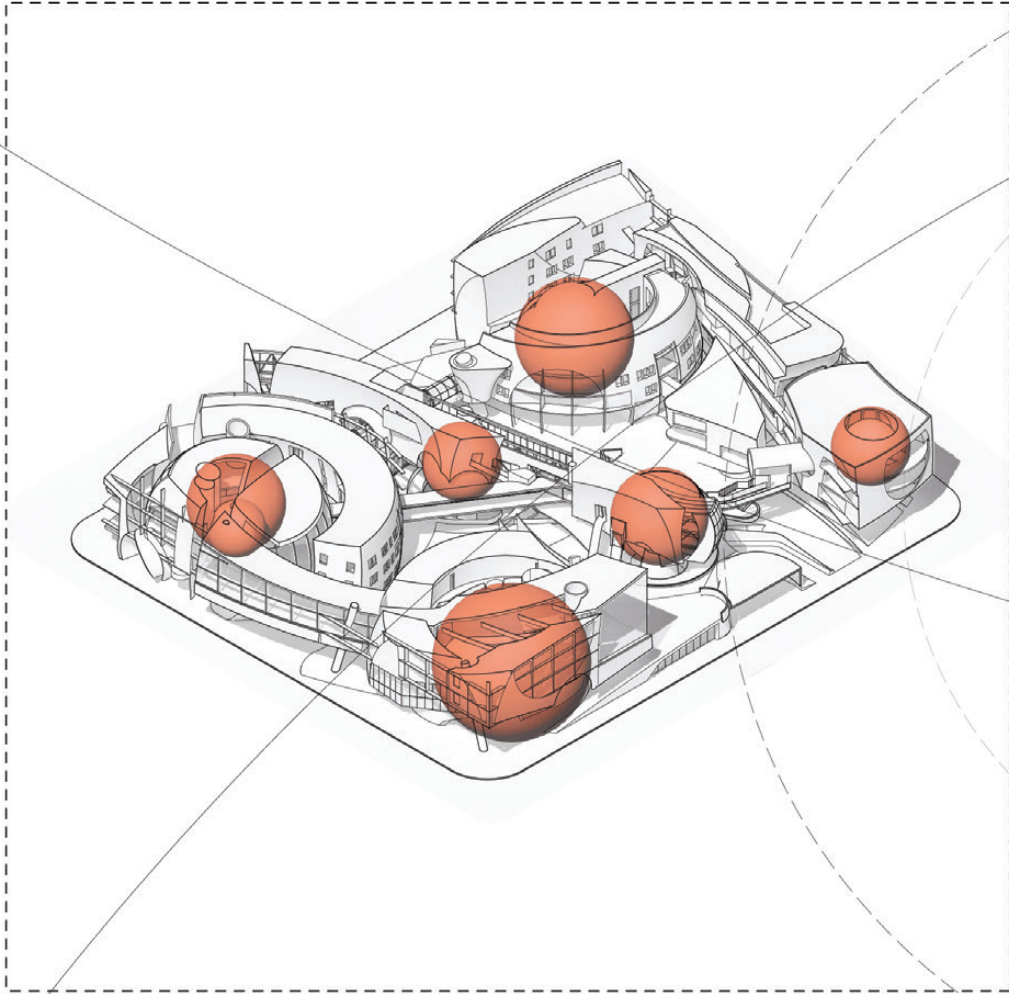
Site Ceter Bar

[A.04]



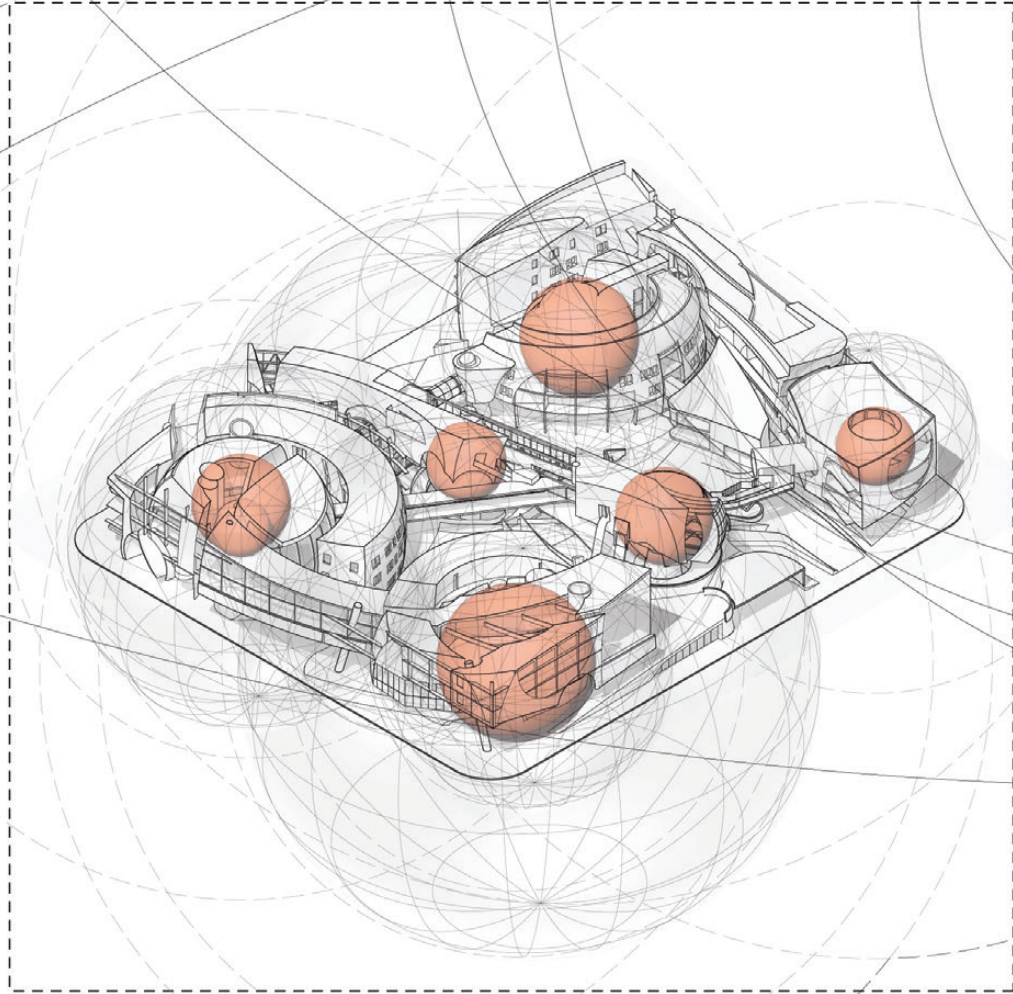


Central Nodes



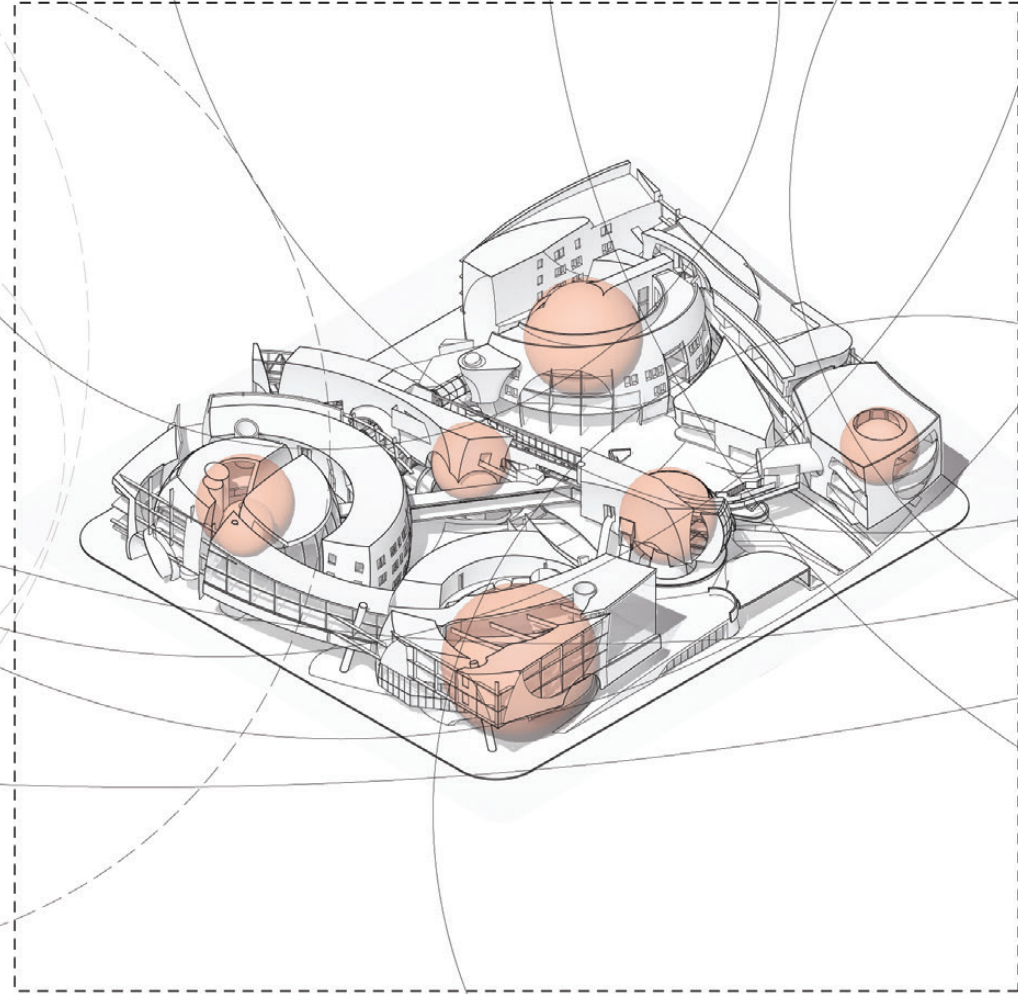
Central nodes evenly spaced through the project create locations of interest and starting point for nesting actions.

Expanding Nodes



Central nodes expand carving into one another breaking up the forms and developing crevices within each other, maintaining direct relationships to the nodes throughout the project.

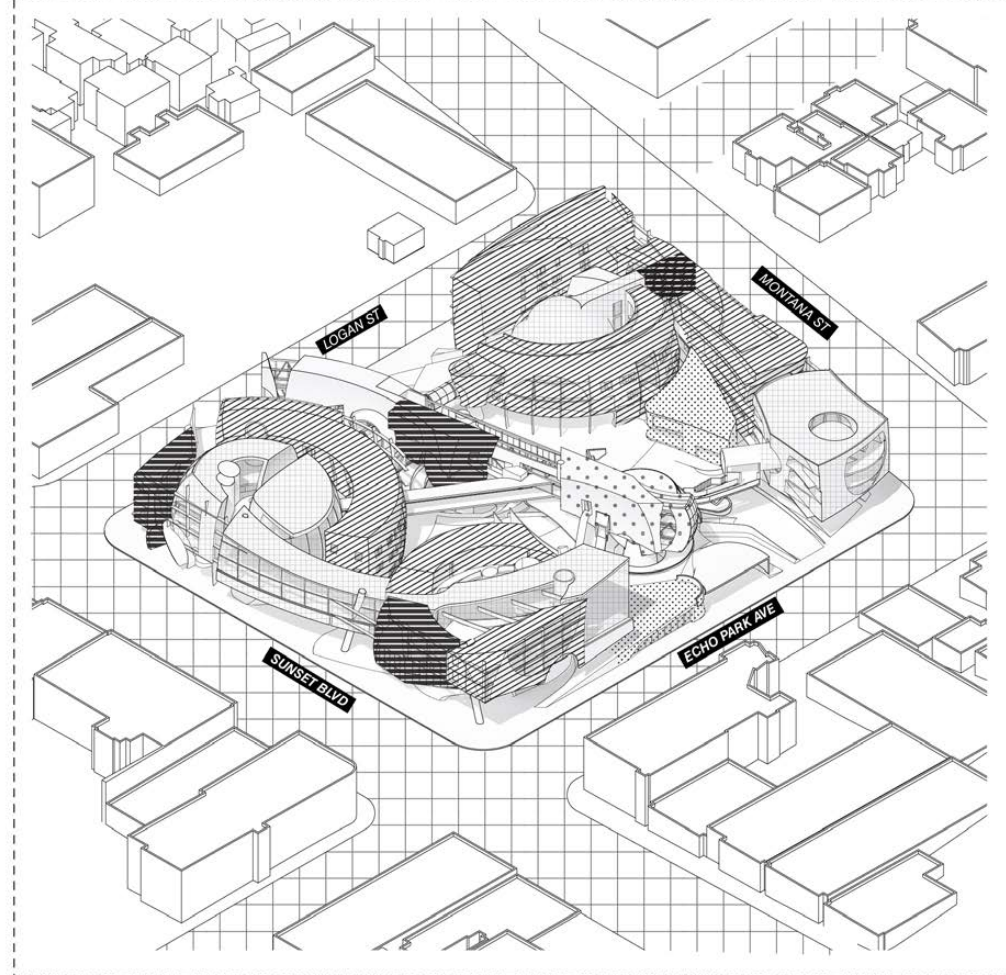
Surfaces Scalloping



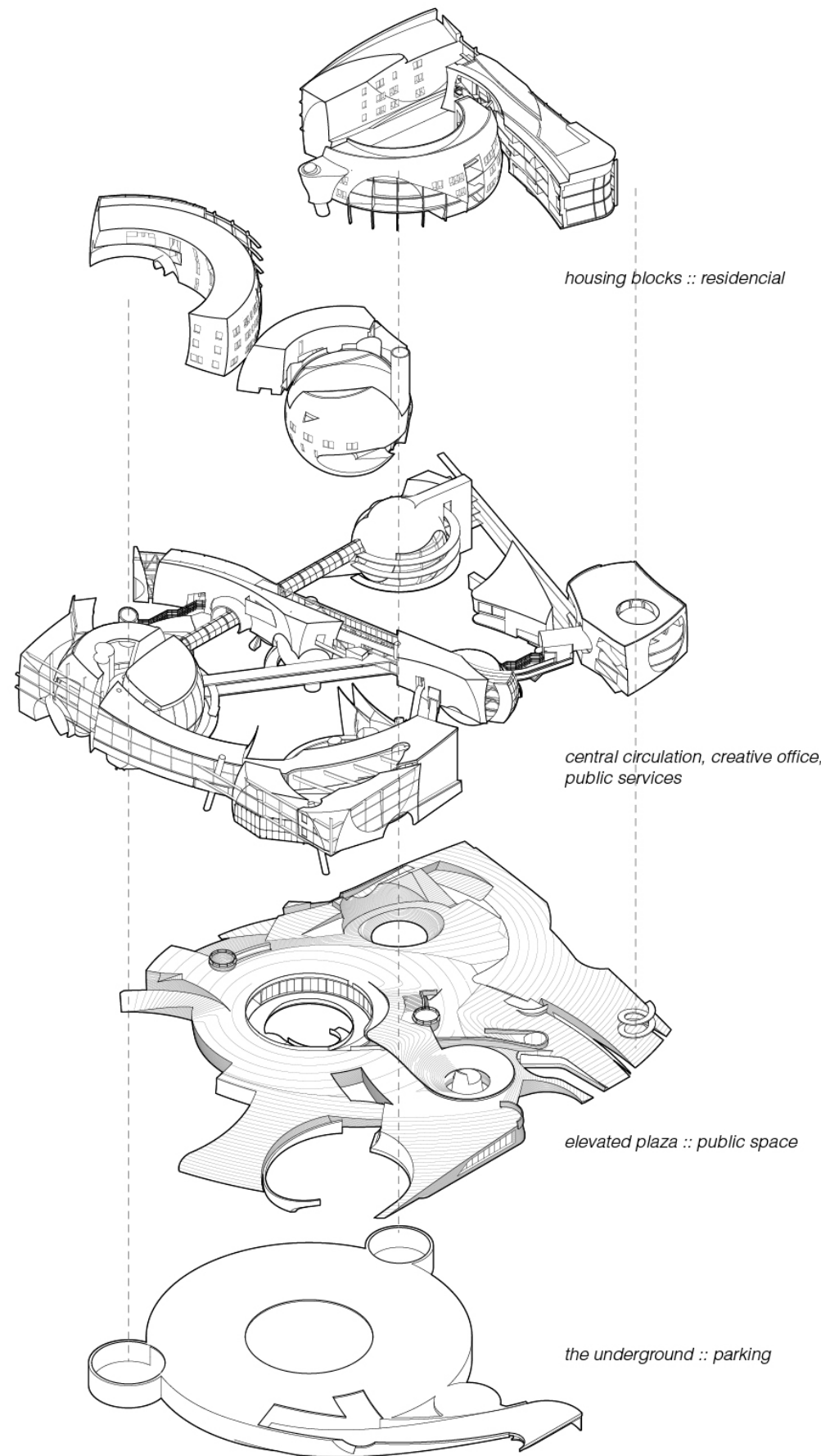
Large and small spheres scallop the exterior of the massings developing an additional level of articulation divergent from the central nodes.

Program Diagram

[A.04]

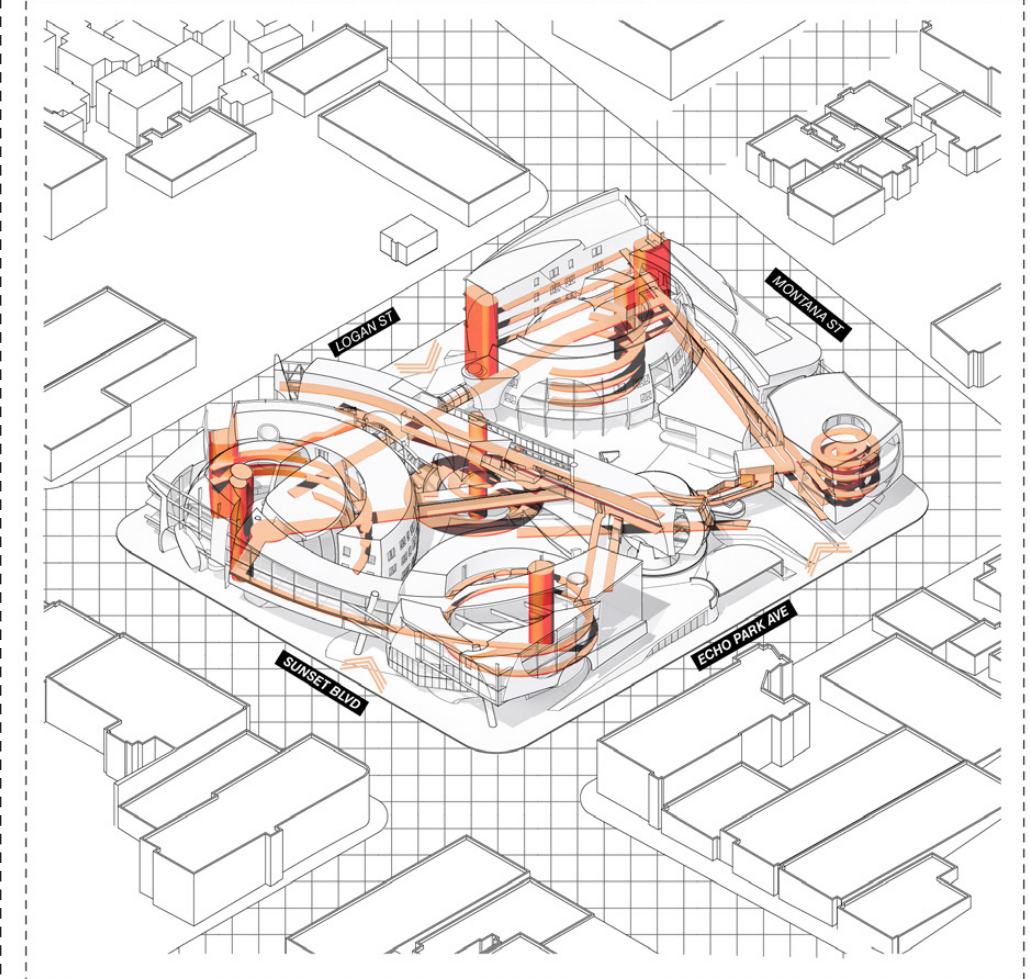


housing
  public gathering
  creative office
  public services
  bath + mail



Circulation

[A.02]



**PLAN 01**

The first level plan had a strong relationship to the street. Businesses and retail outlets are logated around the perimeter of the site allowing for easy access by pedestrians. Towards the center some areas become unoccupiable under the plaza but opening up to the central circulation and an office space.

**PROGRAM GUIDE**

**1.0 Visitors and Services**

**1.1 Visitors**

- 1.1.1 Lobby + Information Hub
- 1.1.2 Exhibition Hall
- 1.1.3 Exterior Amphetheatre
- 1.1.4 Public Bath House
- 1.1.5 Meeting Hall
- 1.1.6 Public Restrooms
- 1.1.7 Education Perch
- 1.1.8 Flex Space

**1.2 Services**

- 1.2.1 Health Clinic + Pharmacy
- 1.2.2 Public Services
- 1.2.3 Public Support Spaces
- 1.2.4 Daycare
- 1.2.5 Social Services

**2.0 Consumerism and Leisure**

**2.1 Leisure + Nutrients**

- 2.1.1 Restaurant
- 2.1.2 Sunset Cafe
- 2.1.3 The Corner Store
- 2.1.4 The Cafeteria
- 2.1.5 Rooftop Spa
- 2.1.6 Stair Talk
- 2.1.7 Grocery

**2.2 Consumerism**

- 2.2.1 Gift Shop
- 2.2.2 Kinetic Retail
- 2.2.3 Mail Room

**3.0 Office**

- 3.1 Flexible Open Office
- 3.2 Meeting Rooms
- 3.3 Restrooms
- 3.4 Non-Flexible Creative Office Studios
- 3.5 Office Kitchen
- 3.6 Isolation Pods
- 3.7 Office Storage

**4.0 Residential**

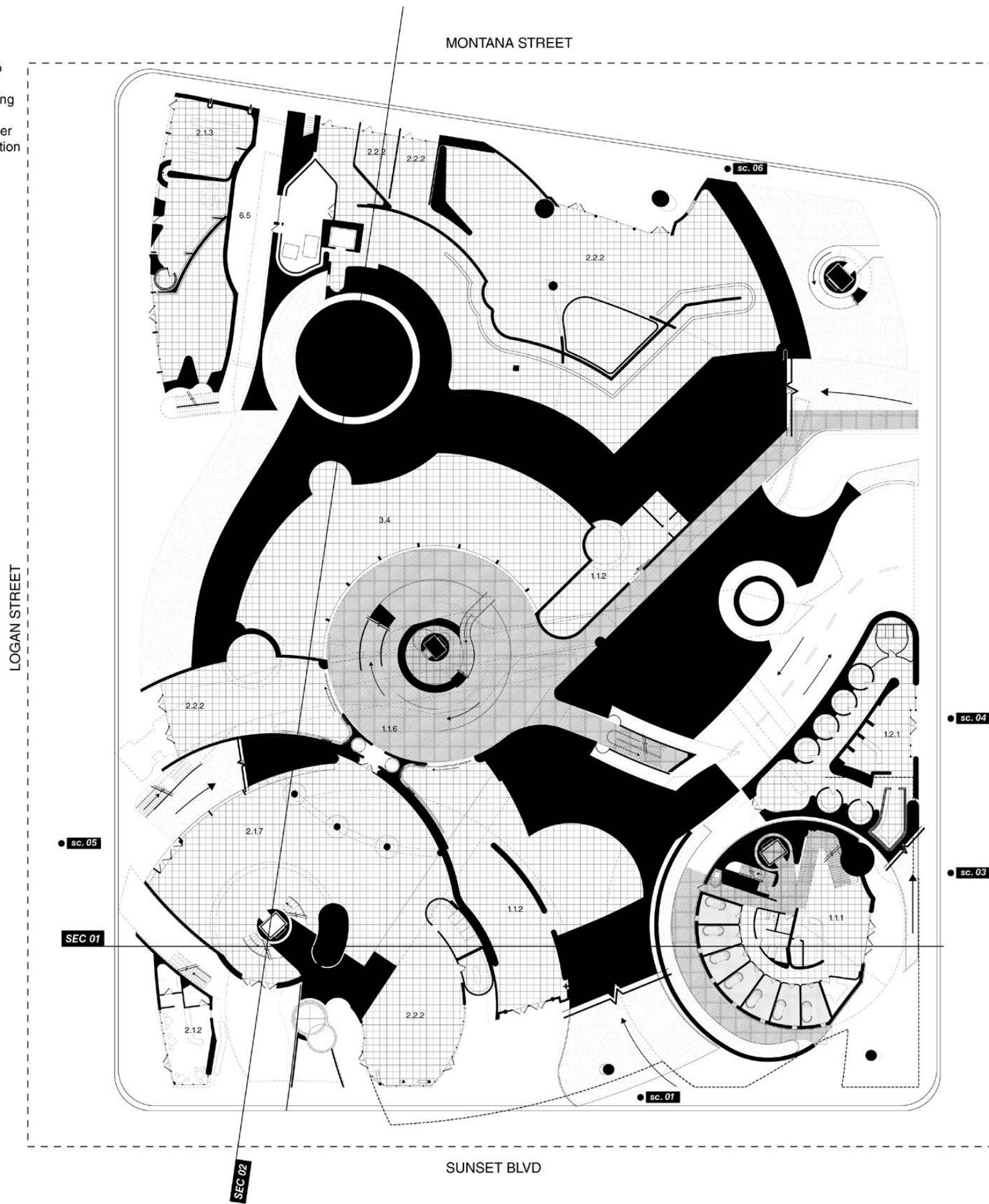
- 4.1 Micro Housing
- 4.2 Studio Apartment
- 4.3 One Bedroom
- 4.4 Two Bedroom
- 4.5 Three Bedroom
- 4.6 Public Laundro MATT
- 4.7.1 Transient Family Housing
- 4.7.2 Transient Family Communal Space

**5.0 Hotel**

- 5.1 Botique Hotel
- 5.2 Transient Hotel
- 5.3 Event Hall

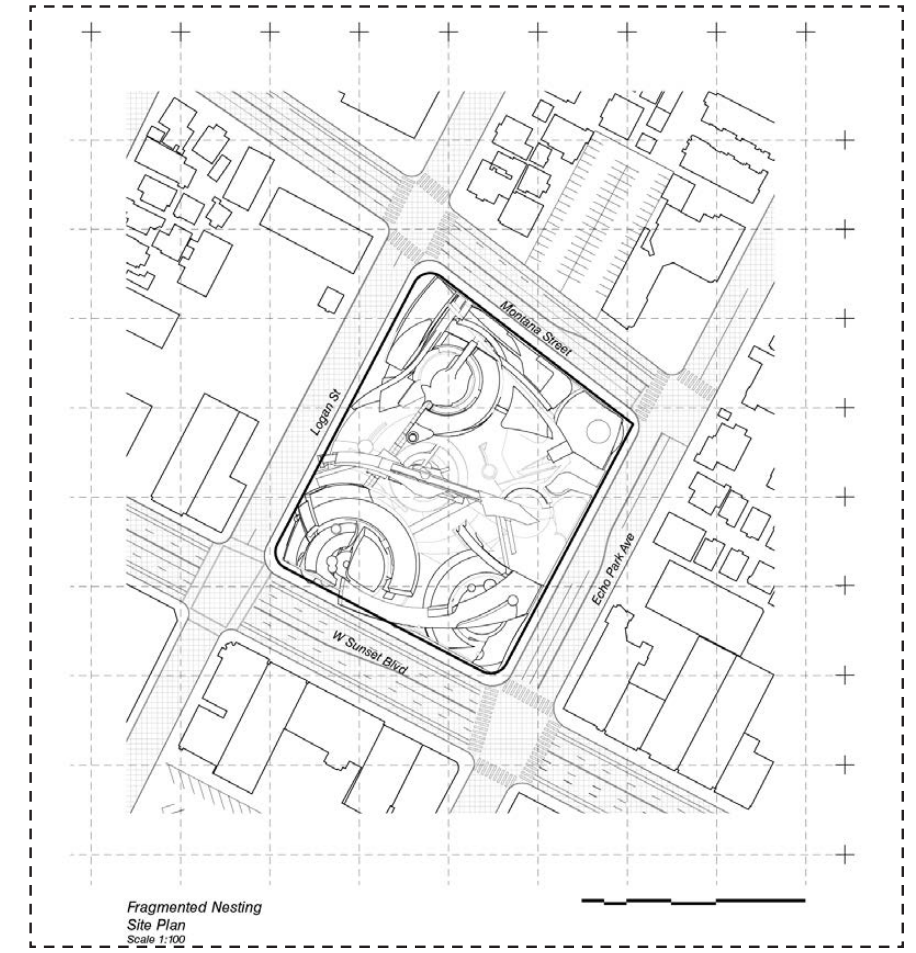
**6.0 Logistics**

- 6.1 Loading and Unloading Zone
- 6.2 Custodial Storage\*
- 6.3 Parking Garage
- 6.4 Residence Storage
- 6.5 Loading Bay
- 6.6 Mechanical Rooms\*



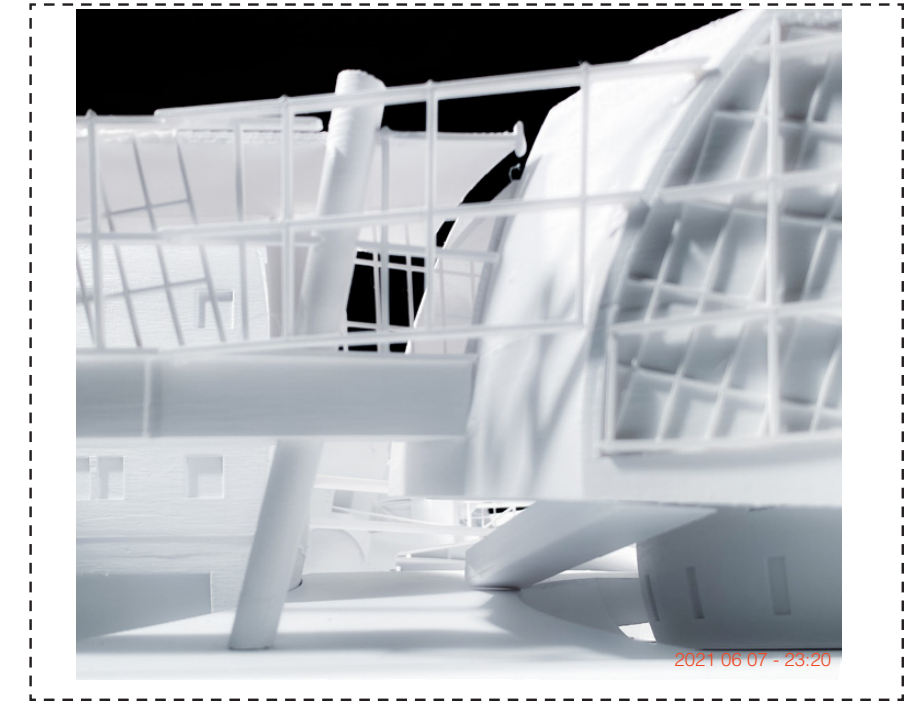
Site Plan

[A.02]



Sunset Blvd Plaza Entrance

[A.00]



**PLAN 02**

The second level plan demonstrates the extent of the central plaza, providing large areas to gather outside while weaving into the voids between the nested form. These forms begin to hold housing and office spaces in the central orbs.

**PROGRAM GUIDE**

**1.0 Visitors and Services**

**1.1 Visitors**

- 1.1.1 Lobby + Information Hub
- 1.1.2 Exhibition Hall
- 1.1.3 Exterior Amphitheatre
- 1.1.4 Public Bath House
- 1.1.5 Meeting Hall
- 1.1.6 Public Restrooms
- 1.1.7 Education Perch
- 1.1.8 Flex Space

**1.2 Services**

- 1.2.1 Health Clinic + Pharmacy
- 1.2.2 Public Services
- 1.2.3 Public Support Spaces
- 1.2.4 Daycare
- 1.2.5 Social Services

**2.0 Consumerism and Leisure**

**2.1 Leisure + Nutrients**

- 2.1.1 Restaurant
- 2.1.2 Sunset Cafe
- 2.1.3 The Corner Store
- 2.1.4 The Cafeteria
- 2.1.5 Rooftop Spa
- 2.1.6 Stair Talk
- 2.1.7 Grocery

**2.2 Consumerism**

- 2.2.1 Gift Shop
- 2.2.2 Kinetic Retail
- 2.2.3 Mail Room

**3.0 Office**

- 3.1 Flexible Open Office
- 3.2 Meeting Rooms
- 3.3 Restrooms
- 3.4 Non-Flexible Creative Office Studios
- 3.5 Office Kitchen
- 3.6 Isolation Pods
- 3.7 Office Storage

**4.0 Residential**

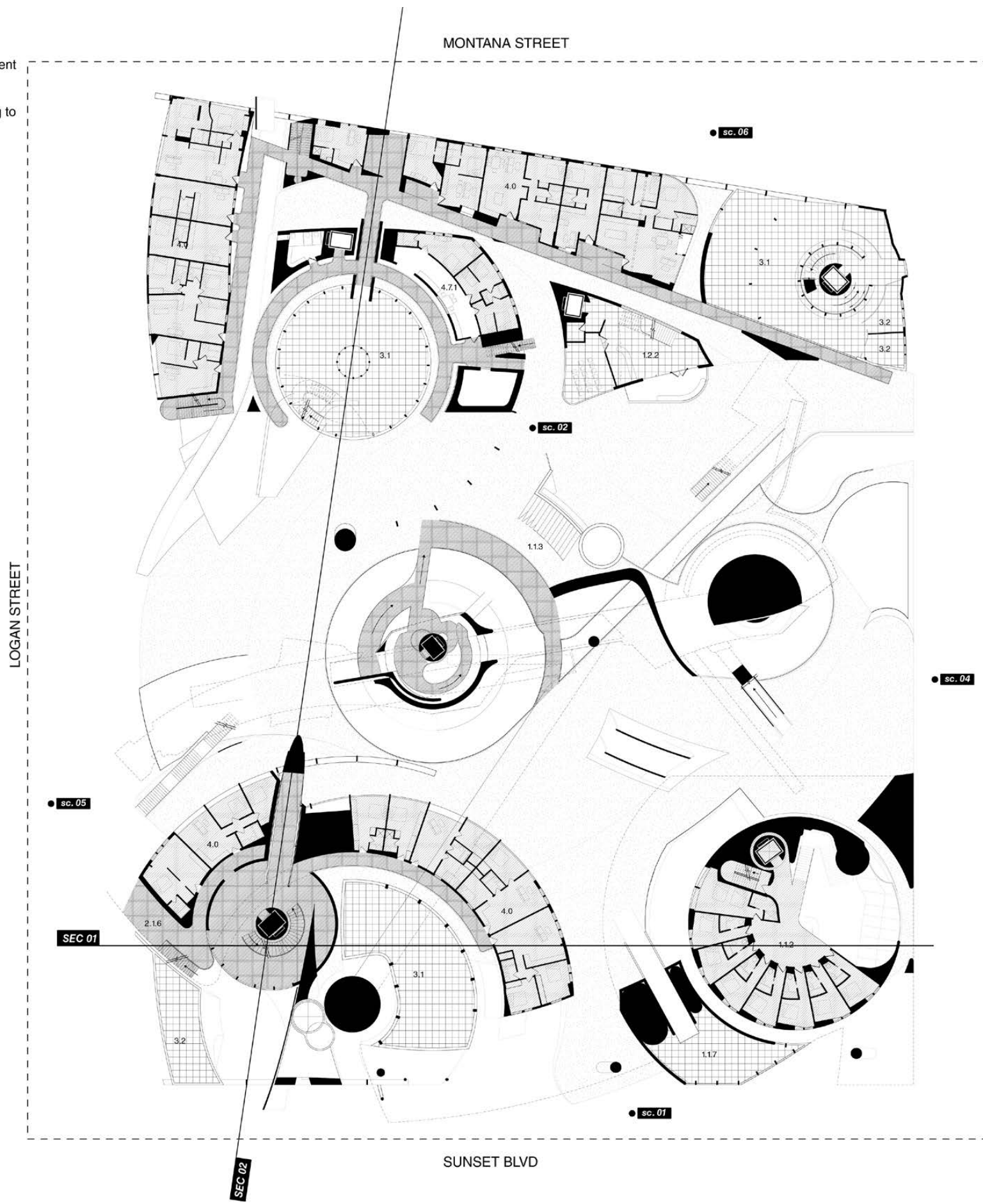
- 4.1 Micro Housing
- 4.2 Studio Apartment
- 4.3 One Bedroom
- 4.4 Two Bedroom
- 4.5 Three Bedroom
- 4.6 Public Laundro MATT
- 4.7.1 Transient Family Housing
- 4.7.2 Transient Family Communal Space

**5.0 Hotel**

- 5.1 Boutique Hotel
- 5.2 Transient Hotel
- 5.3 Event Hall

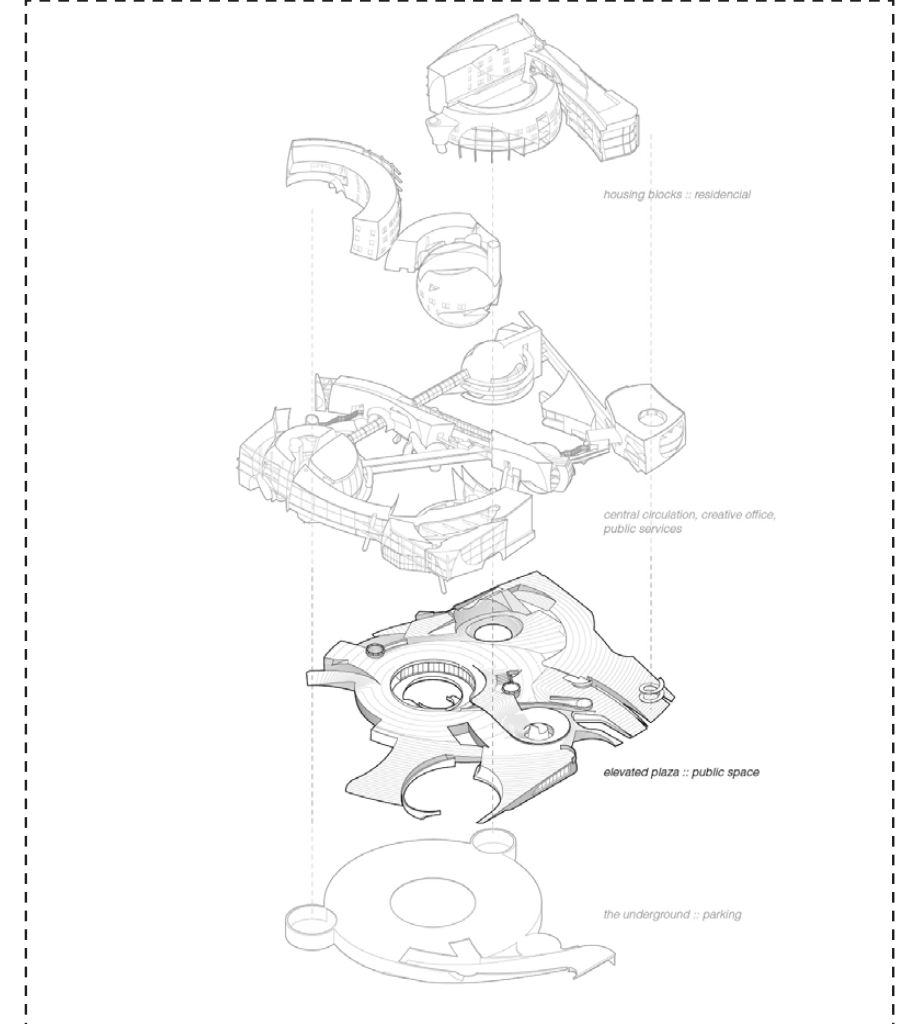
**6.0 Logistics**

- 6.1 Loading and Unloading Zone
- 6.2 Custodial Storage\*
- 6.3 Parking Garage
- 6.4 Residence Storage
- 6.5 Loading Bay
- 6.6 Mechanical Rooms\*



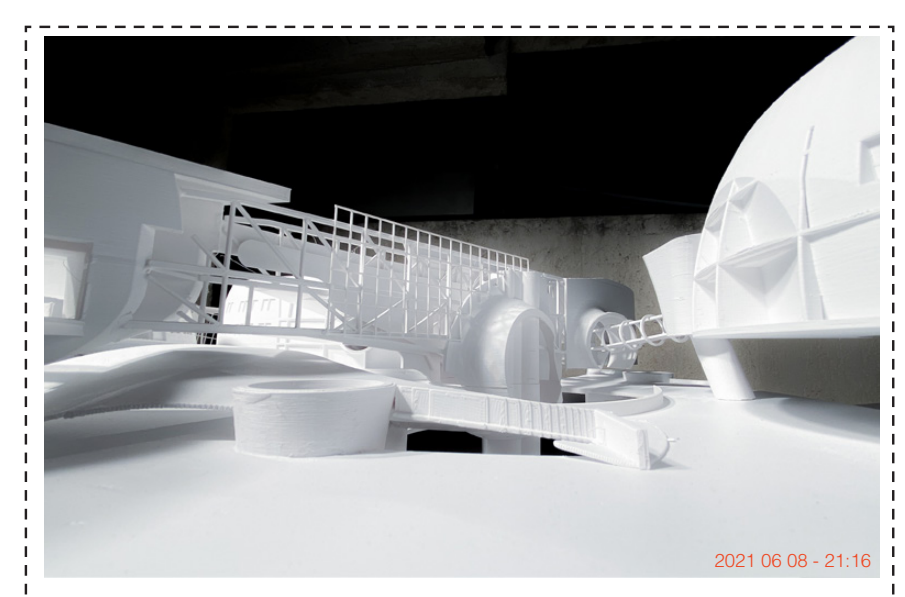
Exploded Axon

[A.04]



PLAZA INTERIOR

[A.06]



02





## PLAN 04

The first level plan had a strong relationship to the street. Businesses and retail outlets are located around the perimeter of the site allowing for easy access by pedestrians. Towards the center some areas become unoccupiable under the plaza but opening up to the central circulation and an office space.

### PROGRAM GUIDE

#### 1.0 Visitors and Services

##### 1.1 Visitors

- 1.1.1 Lobby + Information Hub
- 1.1.2 Exhibition Hall
- 1.1.3 Exterior Amphitheatre
- 1.1.4 Public Bath House
- 1.1.5 Meeting Hall
- 1.1.6 Public Restrooms
- 1.1.7 Education Perch
- 1.1.8 Flex Space

##### 1.2 Services

- 1.2.1 Health Clinic + Pharmacy
- 1.2.2 Public Services
- 1.2.3 Public Support Spaces
- 1.2.4 Daycare
- 1.2.5 Social Services

#### 2.0 Consumerism and Leisure

##### 2.1 Leisure + Nutrients

- 2.1.1 Restaurant
- 2.1.2 Sunset Cafe
- 2.1.3 The Corner Store
- 2.1.4 The Cafeteria
- 2.1.5 Rooftop Spa
- 2.1.6 Stair Talk
- 2.1.7 Grocery

##### 2.2 Consumerism

- 2.2.1 Gift Shop
- 2.2.2 Kinetic Retail
- 2.2.3 Mail Room

#### 3.0 Office

- 3.1 Flexible Open Office
- 3.2 Meeting Rooms
- 3.3 Restrooms
- 3.4 Non-Flexible Creative Office Studios
- 3.5 Office Kitchen
- 3.6 Isolation Pods
- 3.7 Office Storage

#### 4.0 Residential

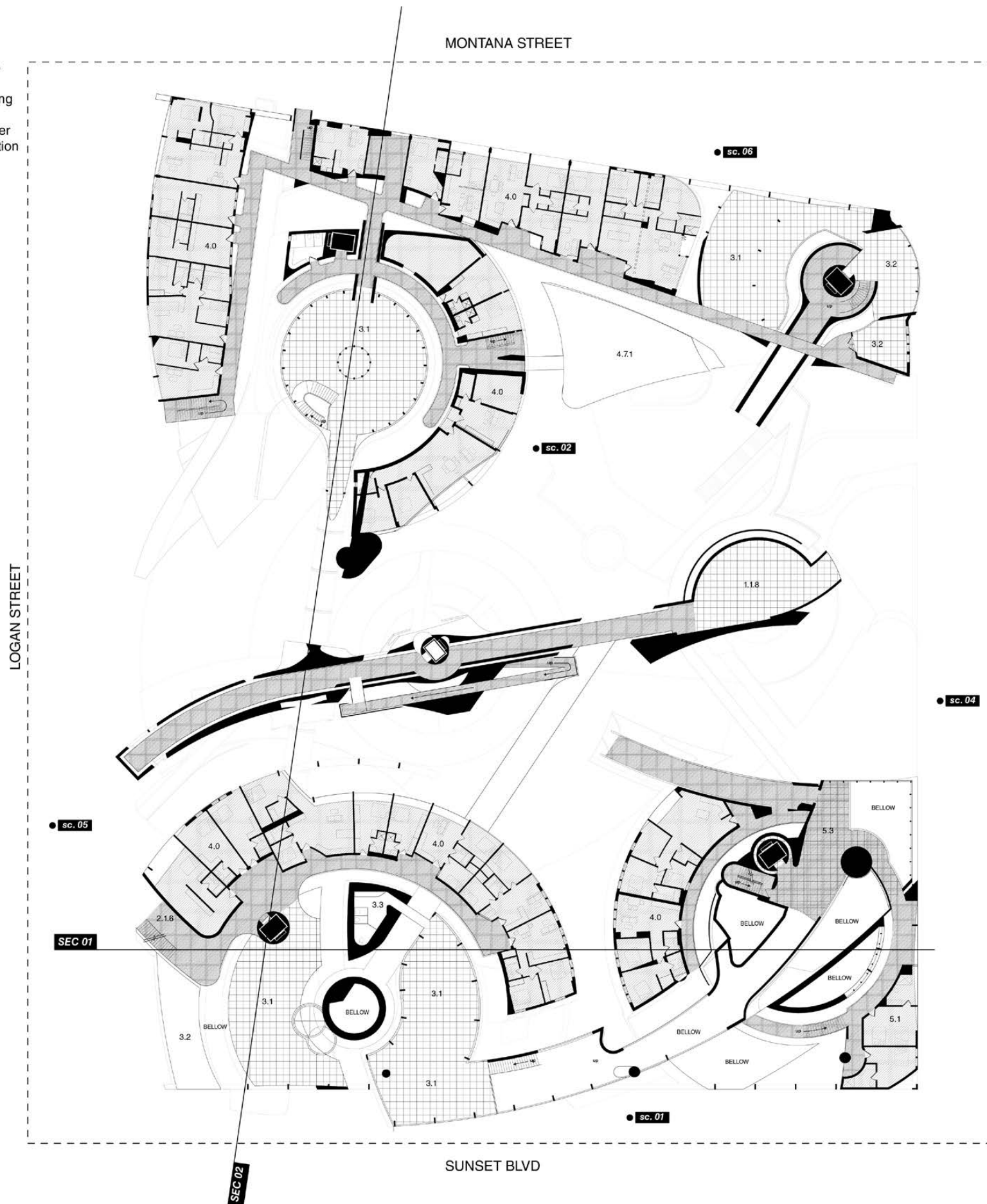
- 4.1 Micro Housing
- 4.2 Studio Apartment
- 4.3 One Bedroom
- 4.4 Two Bedroom
- 4.5 Three Bedroom
- 4.6 Public Laundro MATT
- 4.7.1 Transient Family Housing
- 4.7.2 Transient Family Communal Space

#### 5.0 Hotel

- 5.1 Boutique Hotel
- 5.2 Transient Hotel
- 5.3 Event Hall

#### 6.0 Logistics

- 6.1 Loading and Unloading Zone
- 6.2 Custodial Storage\*
- 6.3 Parking Garage
- 6.4 Residence Storage
- 6.5 Loading Bay
- 6.6 Mechanical Rooms\*



Logan Street View

[A.08]

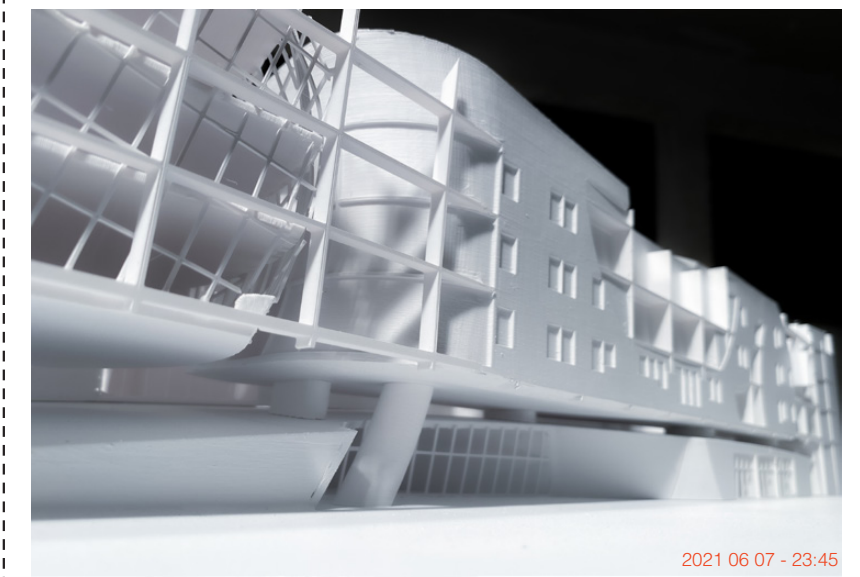


2021.06.07 - 21:47

05

Montana Street Housing View

[A.08]



2021.06.07 - 23:45

06



Into the office we walk, holding hands as if still on our first date. A short yet eventful journey sparking our creative minds as we traversed through the plaza. So many kids played in the grass, it makes me long for one of my own.

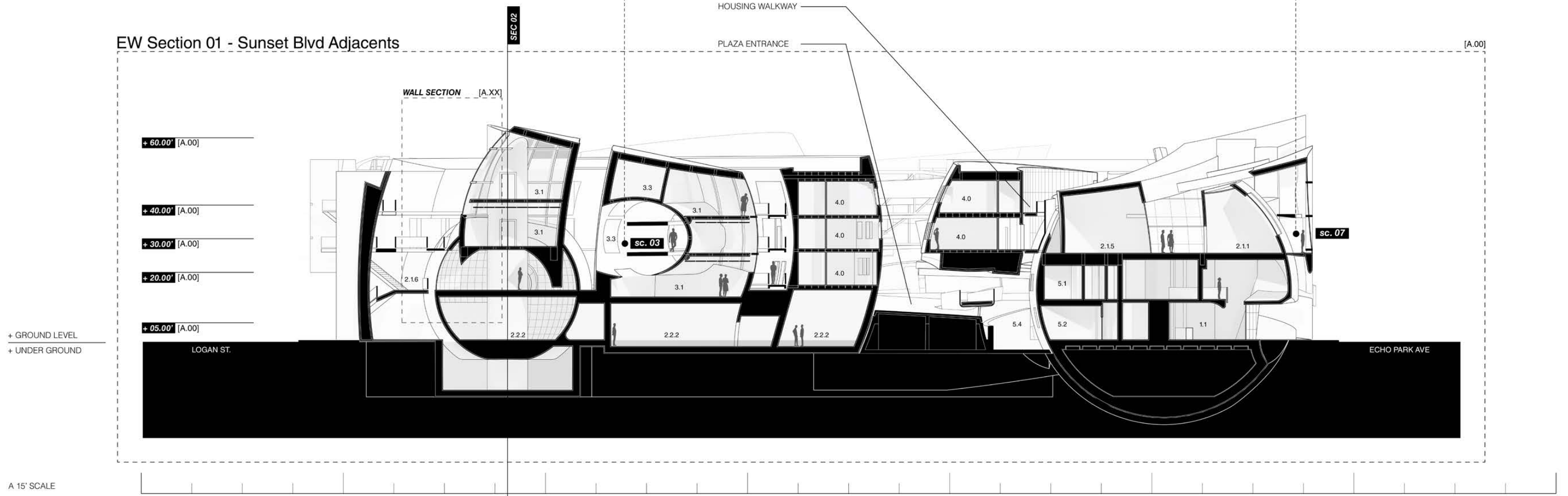
03



Reflections bounce back and forth as I peer down to the streets below, I have little but no where to go. I will follow this path to my room. The lobby man said is was wast of the front desk.

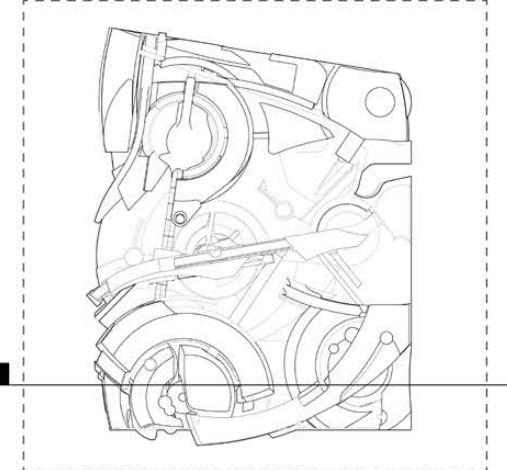
07

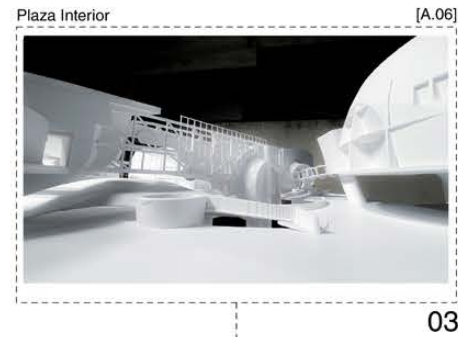
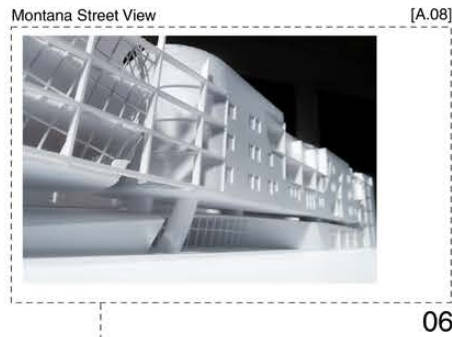
EW Section 01 - Sunset Blvd Adjacents



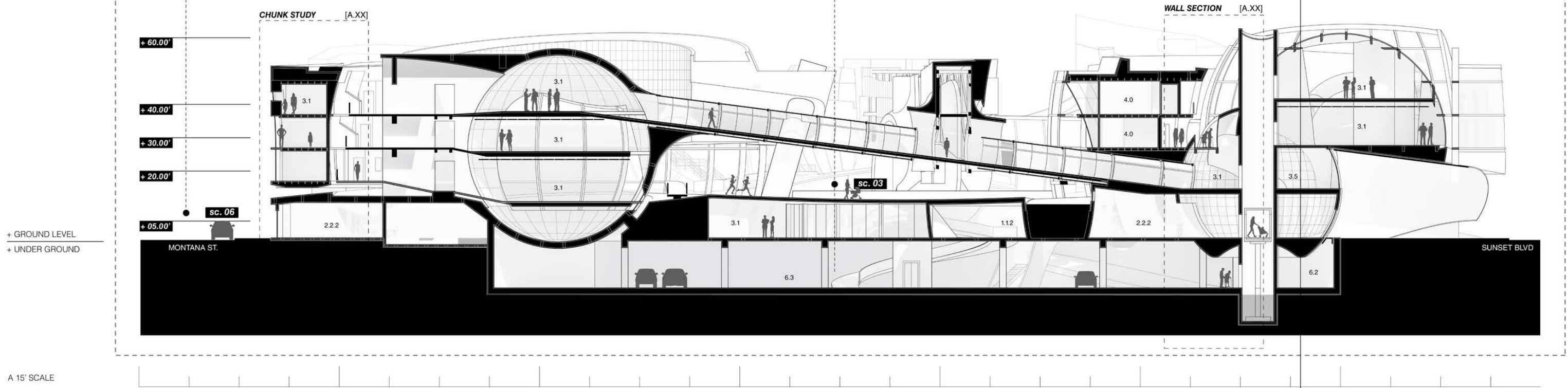
1.0 Visitors and Services		2.0 Consumerism and Leisure				5.0 Hotel		6.0 Logistics	
1.1 Visitors	1.2 Services	2.1 Leisure + Nutrients	2.2 Consumerism	3.0 Office	4.0 Residential	5.1 Botique Hotel	6.1 Loading and Unloading Zone	6.2 Custodial Storage*	6.3 Parking Garage
1.1.1 Lobby + Infomration Hub	1.2.1 Health Clinic + Pharmacy	2.1.1 Restaurant	2.2.1 Gift Shop	3.1 Flexible Open Office	4.1 Micro Housing	5.2 Transient Hotel	6.4 Residence Storage	6.5 Loading Bay	6.6 Mechanical Rooms*
1.1.2 Exhibition Hall	1.2.2 Public Services	2.1.2 Sunset Cafe	2.2.2 Kinetic Retail	3.2 Meeting Rooms	4.2 Studio Apartment	5.3 Event Hall	6.4.1 Custodial Storage		
1.1.3 Exterior Ampetheatre	1.2.3 Public Suport Spaces	2.1.3 The Corner Store	2.2.3 Mail Room	3.3 Restrooms	4.3 One Bedroom	5.4 Transient Courtyard			
1.1.4 Public Bath House	1.2.4 Daycare	2.1.4 The Cafeteria		3.4 Non-Flexible Creative Office Studios	4.4 Two Bedroom				
1.1.5 Meeting Hall	1.2.5 Social Services	2.1.5 Rooftop Spa		3.5 Office Kitchen	4.5 Three Bedroom				
1.1.6 Public Restrooms		2.1.6 Stair Talk		3.6 Isolation Pods	4.6 Public Laundro MATT				
1.1.7 Education Perch		2.1.7 Grocery		3.7 Office Storage	4.7 Transient Family Housing				
1.1.8 Flex Space					4.7.2 Transient Family Communal Space				

PLAN REFERENCE





NW Section 02 - Creative Office Connections [A.00]

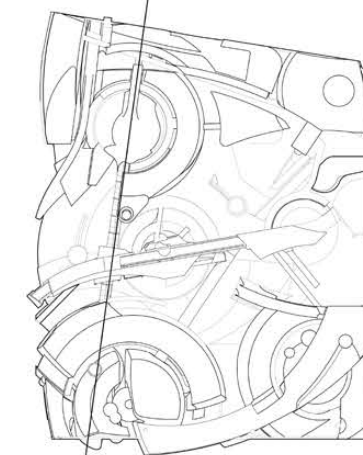


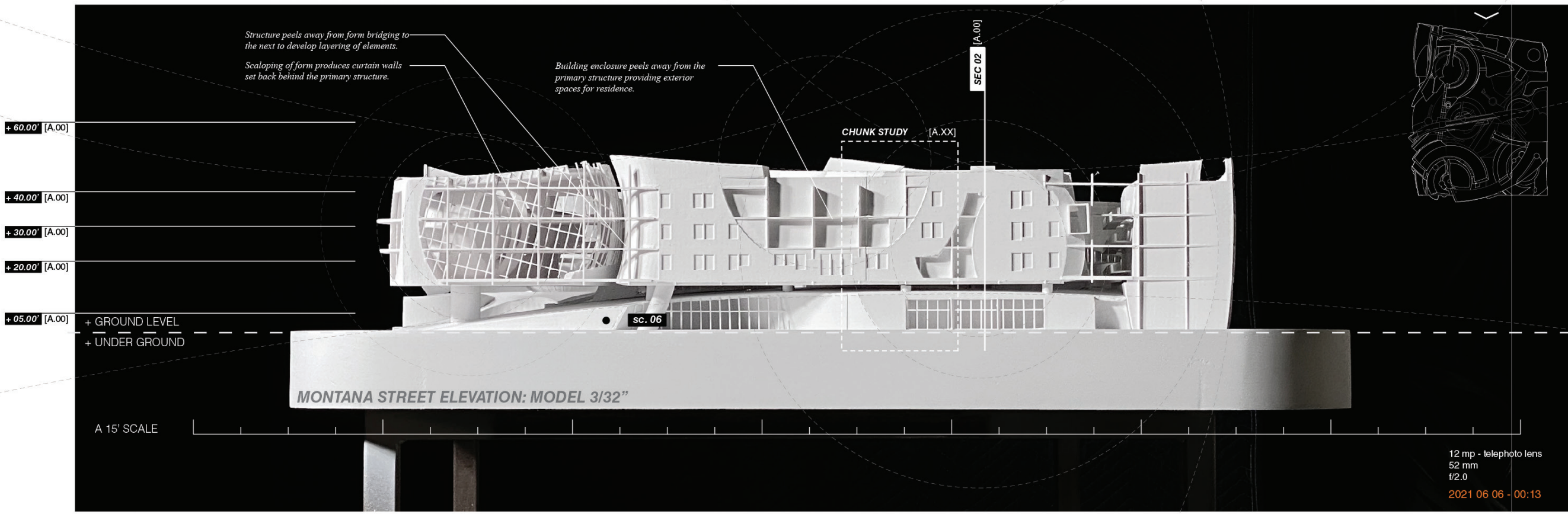
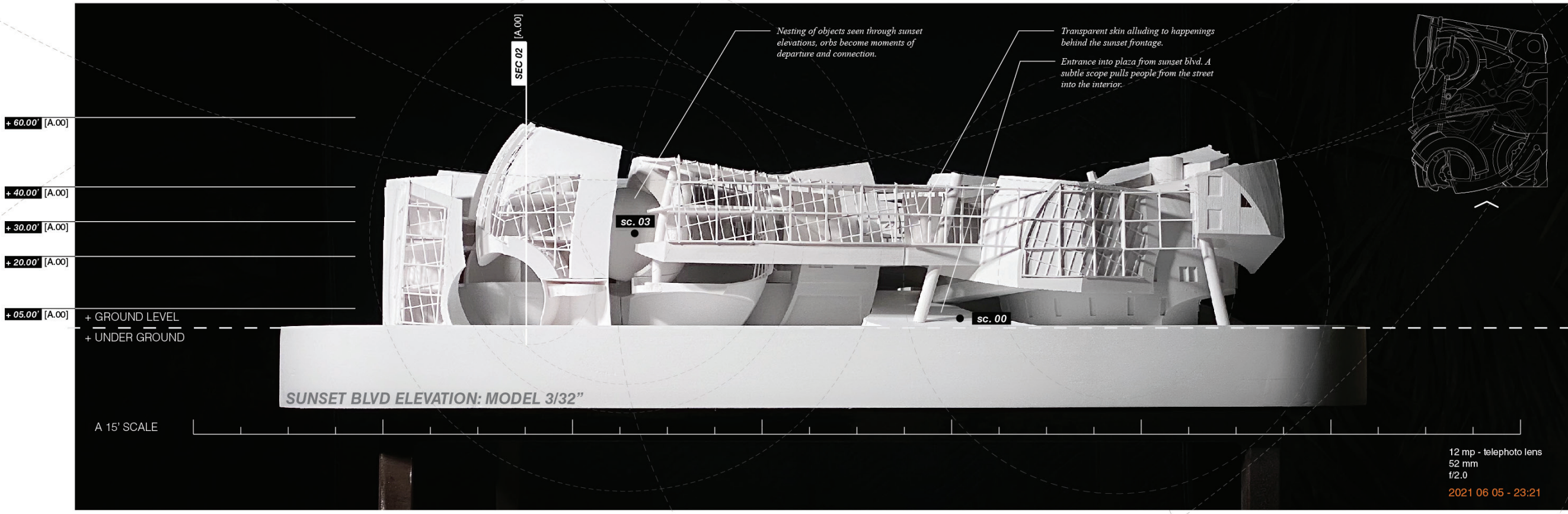
A 1/8" SCALE

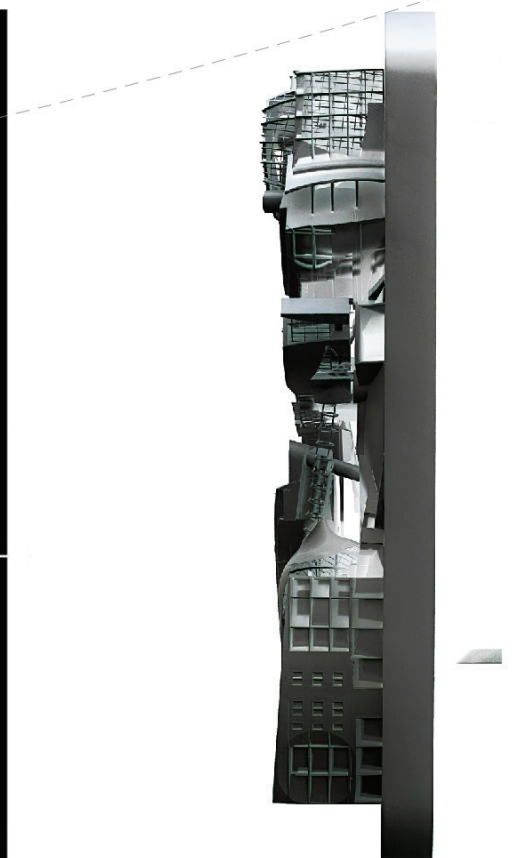
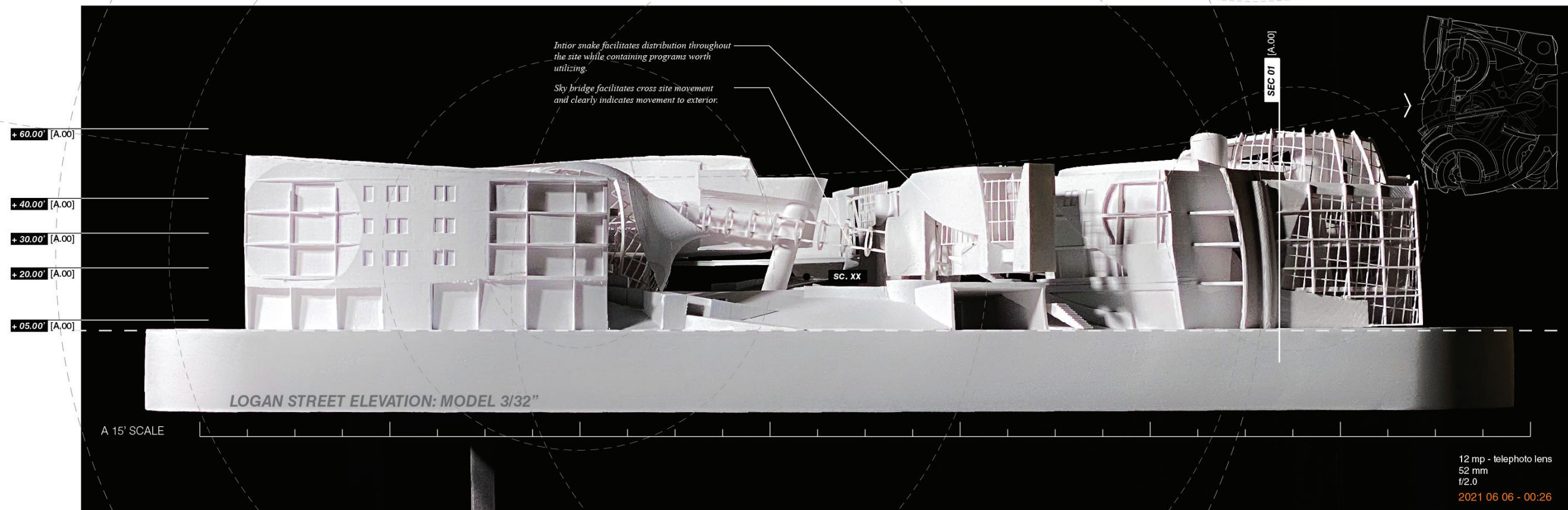
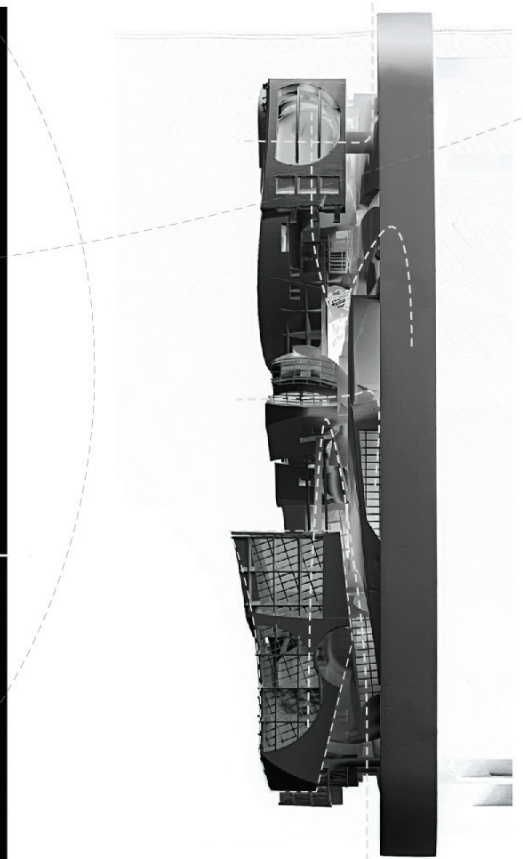
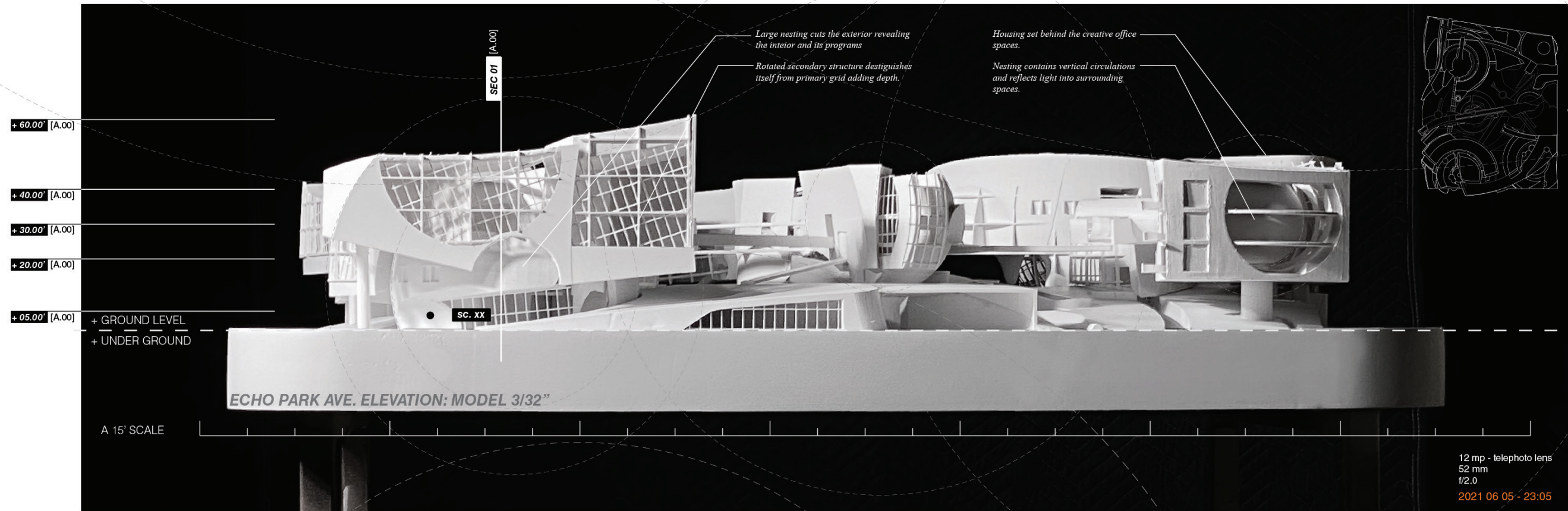
PROGRAM GUIDE

1.0 Visitors and Services		2.0 Consumerism and Leisure					
1.1 Visitors	1.2 Services	2.1 Leisure + Nutrients	2.2 Consumerism	3.0 Office	4.0 Residential	5.0 Hotel	6.0 Logistics
1.1.1 Lobby + Infomration Hub	1.2.1 Health Clinic + Pharmacy	2.1.1 Restaurant	2.2.1 Gift Shop	3.1 Flexible Open Office	4.1 Micro Housing	5.1 Boutique Hotel	6.1 Loading and Unloading Zone
1.1.2 Exhibition Hall	1.2.2 Public Services	2.1.2 Sunset Cafe	2.2.2 Kinetic Retail	3.2 Meeting Rooms	4.2 Studio Apartment	5.2 Transient Hotel	6.2 Custodial Storage*
1.1.3 Exterior Ampetheatre	1.2.3 Public Suport Spaces	2.1.3 The Corner Store	2.2.3 Mail Room	3.3 Restrooms	4.3 One Bedroom	5.3 Event Hall	6.3 Parking Garage
1.1.4 Public Bath House	1.2.4 Daycare	2.1.4 The Cafeteria		3.4 Non-Flexible Creative Office Studios	4.4 Two Bedroom	5.4 Transient Courtyard	6.4 Residence Storage
1.1.5 Meeting Hall	1.2.5 Social Services	2.1.5 Rooftop Spa		3.5 Office Kitchen	4.5 Three Bedroom		6.5 Loading Bay
1.1.6 Public Restrooms		2.1.6 Stair Talk		3.6 Isolation Pods	4.6 Public Laundro MATT		6.6 Mechanical Rooms*
1.1.7 Education Perch		2.1.7 Grocery		3.7 Office Storage	4.7.1 Transient Family Housing		
1.1.8 Flex Space					4.7.2 Transient Family Communal Space		

PLAN REFERENCE







Fenestration Structural Layering Detail

[A.00]



2021 06 07 - 22:45

03

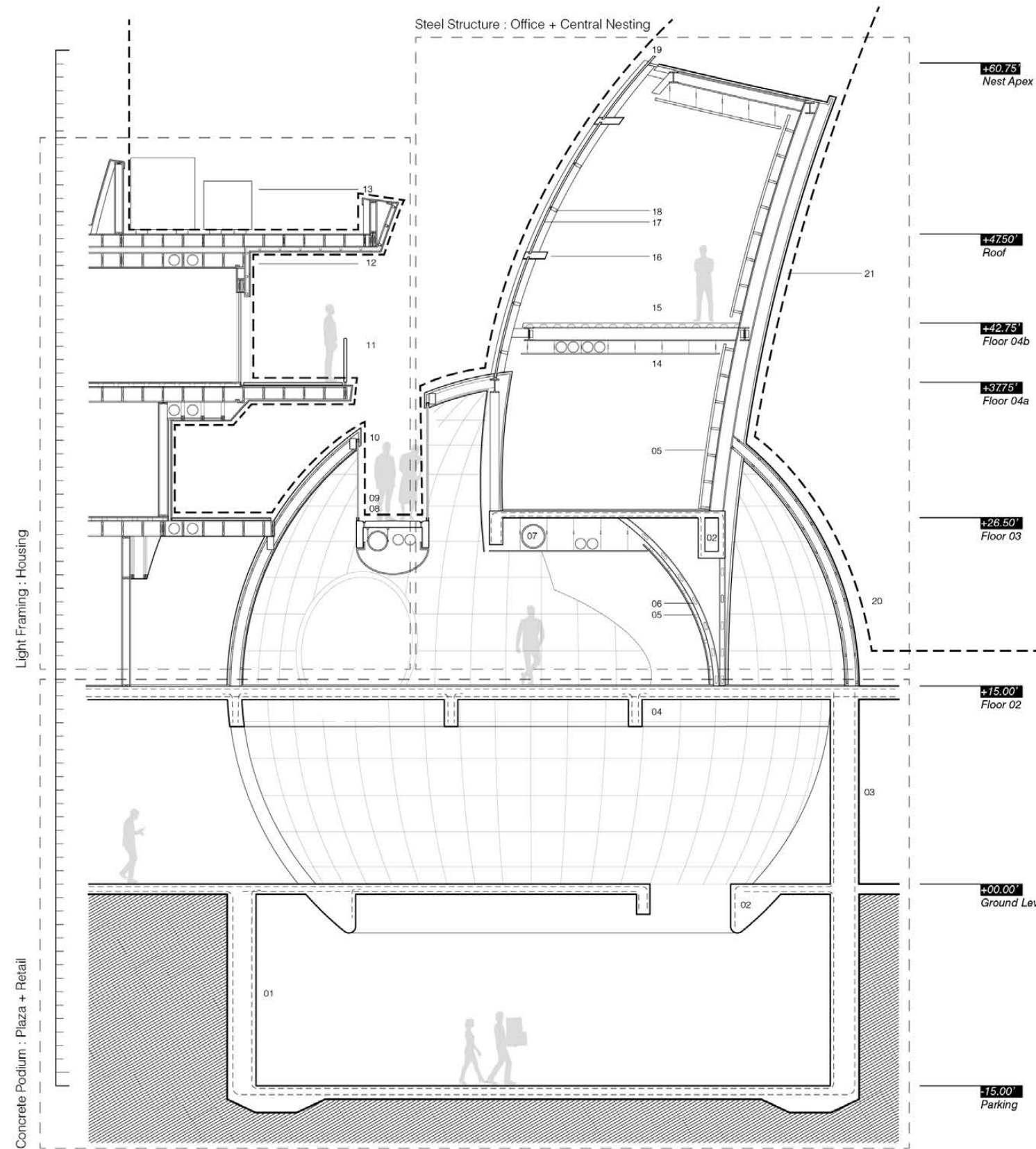
Nested Spheres Top View

[A.00]



2021 06 07 - 22:54

03



Light Framing : Housing

Concrete Podium : Plaza + Retail

Steel Structure : Office + Central Nesting

+60.75' Nest Apex

+47.50' Roof

+42.75' Floor 04b

+37.75' Floor 04a

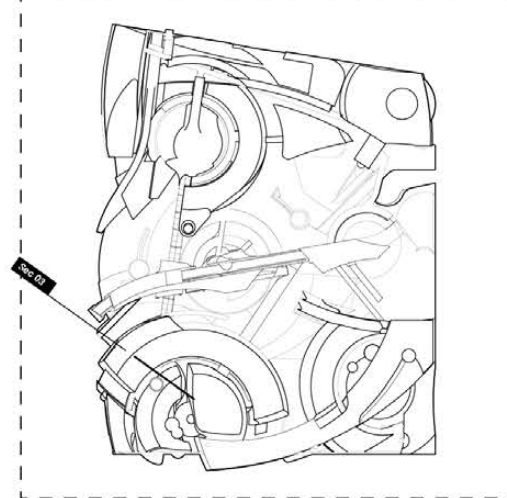
+26.50' Floor 03

+15.00' Floor 02

+00.00' Ground Level

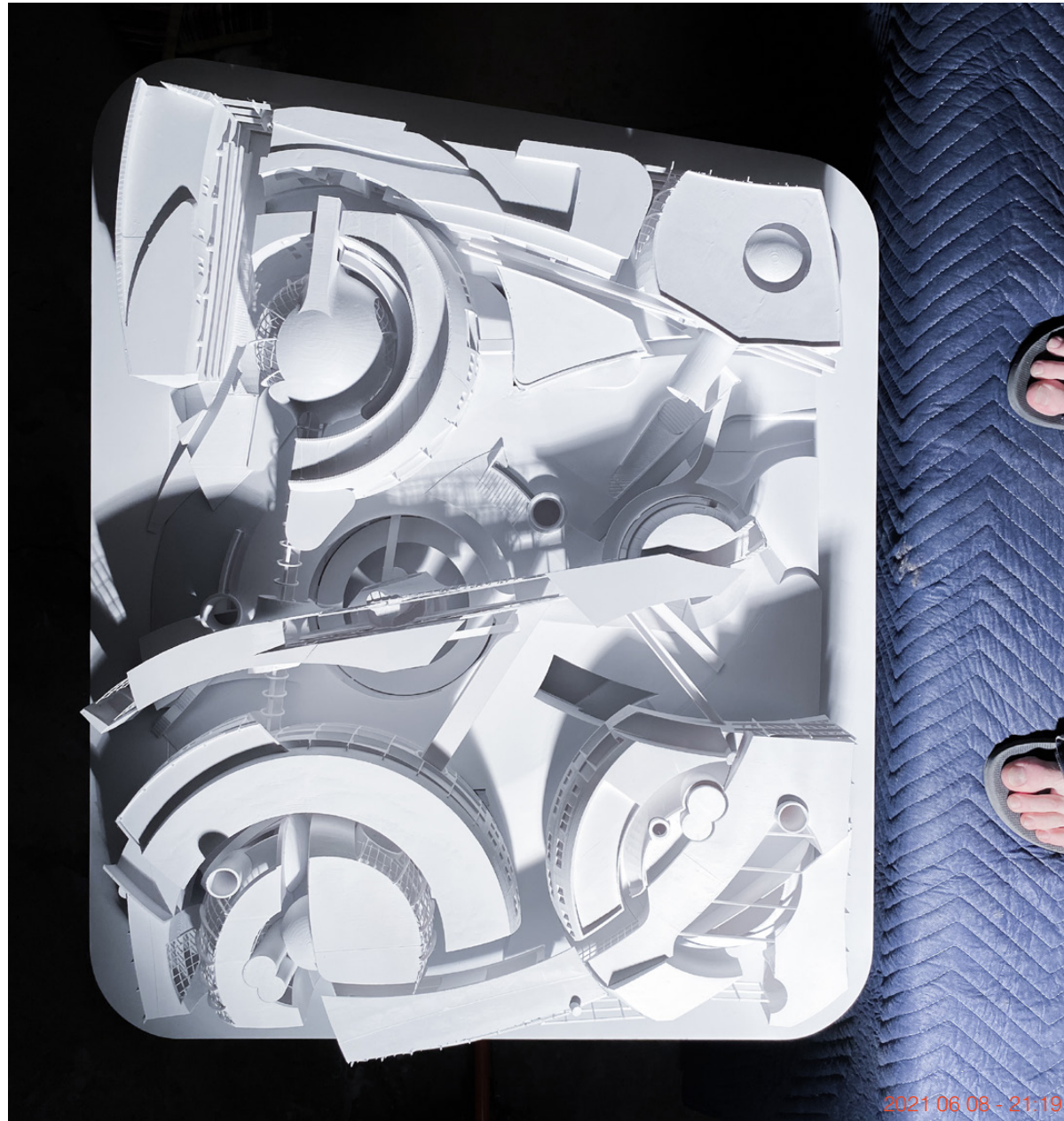
-15.00' Parking

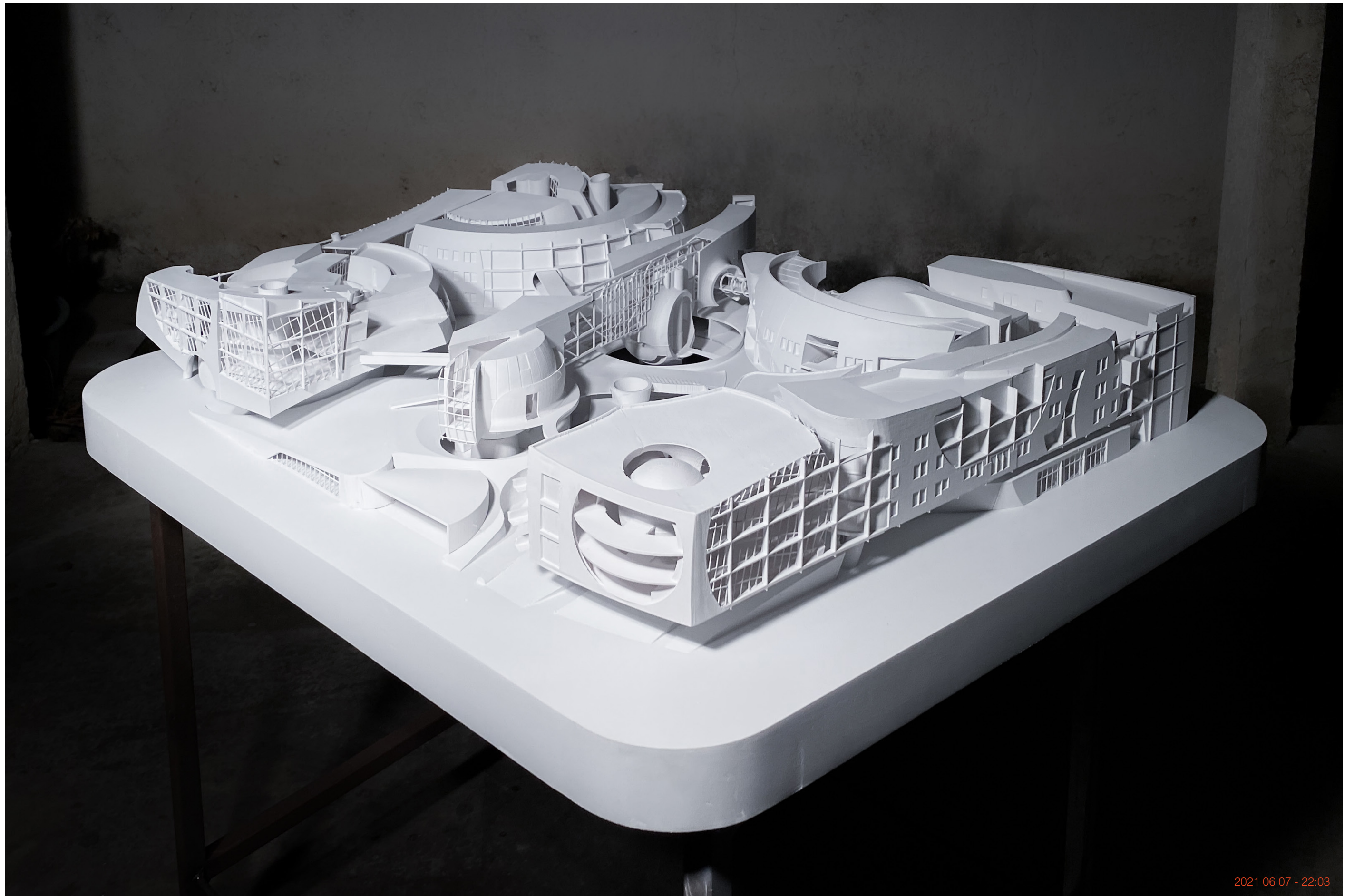
PLAN REFERENCE



Material and Construction

- |  |  |   |  |
|--|--|---|--|
| 01 concrete foundation for underground parking entrance. | 06 light steel framing, curved to radius of sphere.    | 11 panelized railing to prevent falls                       | 17 exterior skin glazing, curved to sphere profile           |
| 02 transfer girder ring                                  | 07 MEP forced air supply                               | 12 exterior ceiling and wall rain screen with panelizations | 18 secondary diagonal mullion system.                        |
| 03 concrete column system for podium level.              | 08 concrete foot bridge with/ adjacent drainage        | 13 wood framed parapet with exterior skin.                  | 19 glazing continuation into shadow box exterior transition. |
| 04 concrete girder and floor system                      | 09 exterior skin glazing                               | 14 drop ceiling interior                                    | 20 exterior panelization with silicon water proofing system. |
| 05 curved composite panels, interior finish colored.     | 10 glass exterior paneling transition, encased mullion | 15 steel structure with 3" concrete decking.                | 21 steel structural column bent to comply to                 |
|  |  | 16 exterior large mullions with primary structure encased.  |  |





2021 06 07 - 22:03

**FRAGMENTED NESTING**

PROJECT TYPE: RESIDENCIAL, COMMERCIAL  
OFFICE, FUN, AKA MIXED USE

PROJECT LOCATION: 1625 SUNSET BLVD, LOS  
ANGELES, CA 90026

DRAWING BY: ELLIOT ROBINSON

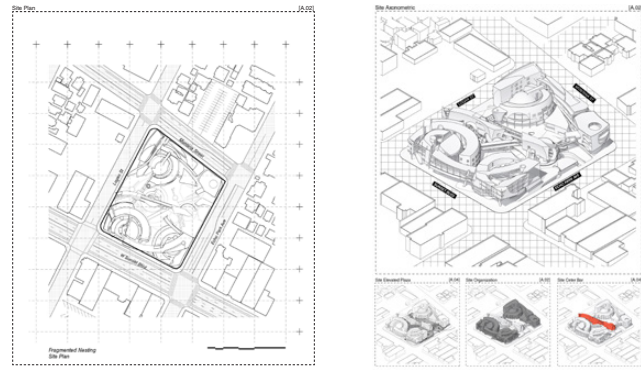
DATE: 2021.06.06

**A.15**





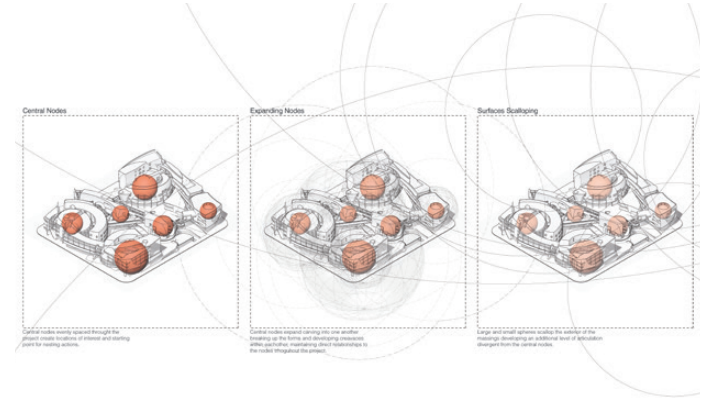
FRAGMENTED NESTING PROJECT TYPE: RESIDENTIAL, COMMERCIAL, OFFICE, FUL, MAX MIXED USE PROJECT LOCATION: 1625 SUNSET BLVD, LOS ANGELES, CA DRAWING BY: ELLIOT ROBINSON DATE: 2021.06.06 A.01



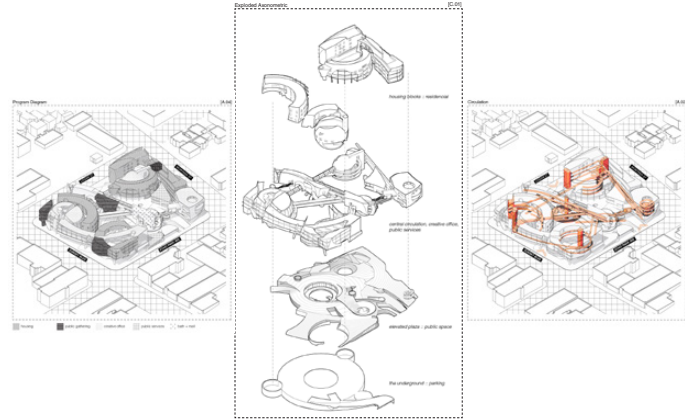
FRAGMENTED NESTING SITE PLAN - SITE STRATEGY PROJECT LOCATION: 1625 SUNSET BLVD, LOS ANGELES, CA DRAWING BY: ELLIOT ROBINSON DATE: 2021.06.06 A.02



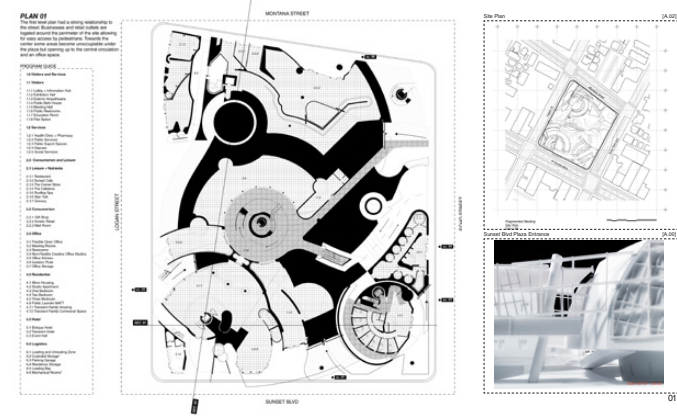
FRAGMENTED NESTING PRELIMINARY FORMAL STUDIES SECTION ANNOTATION PROJECT LOCATION: 1625 SUNSET BLVD, LOS ANGELES, CA DRAWING BY: ELLIOT ROBINSON DATE: 2021.06.06 C.01



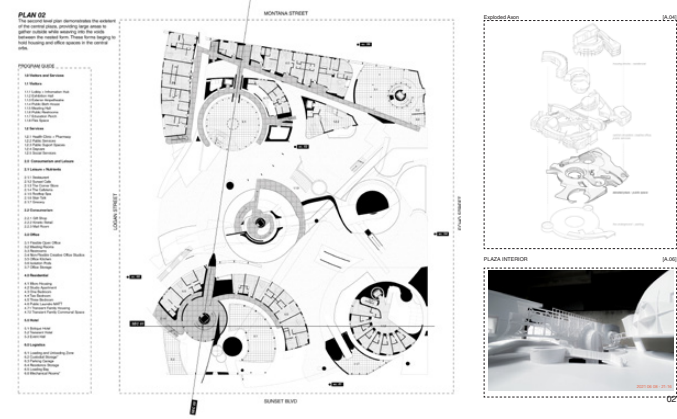
FRAGMENTED NESTING MEETING FORMATION DIAGRAM PROJECT LOCATION: 1625 SUNSET BLVD, LOS ANGELES, CA DRAWING BY: ELLIOT ROBINSON DATE: 2021.06.06 A.03



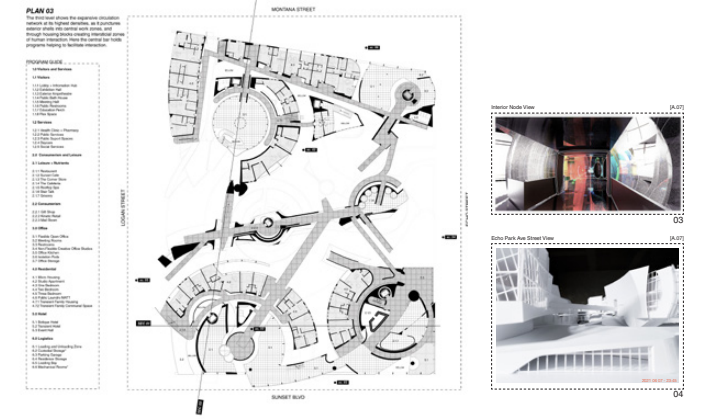
FRAGMENTED NESTING PROGRAM AND EXPLODED AXON PROJECT LOCATION: 1625 SUNSET BLVD, LOS ANGELES, CA DRAWING BY: ELLIOT ROBINSON DATE: 2021.06.06 A.04



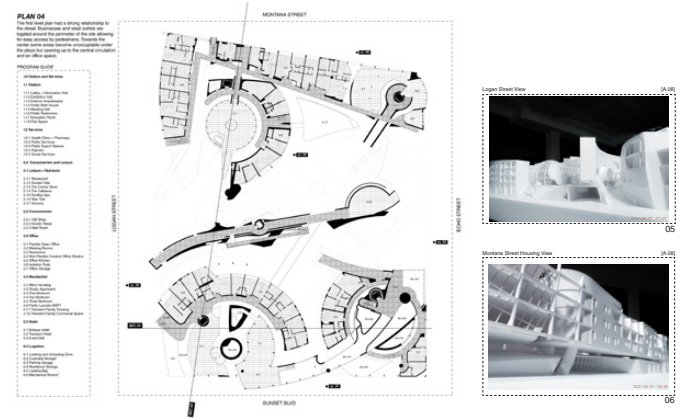
FRAGMENTED NESTING PLAN 01 - SUPPORT MATERIALS PROJECT LOCATION: 1625 SUNSET BLVD, LOS ANGELES, CA DRAWING BY: ELLIOT ROBINSON DATE: 2021.06.06 A.05



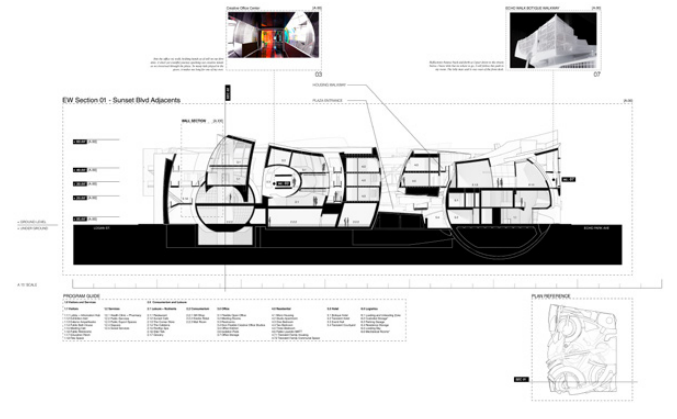
FRAGMENTED NESTING PLAN 02 - SUPPORT MATERIALS PROJECT LOCATION: 1625 SUNSET BLVD, LOS ANGELES, CA DRAWING BY: ELLIOT ROBINSON DATE: 2021.06.06 A.06



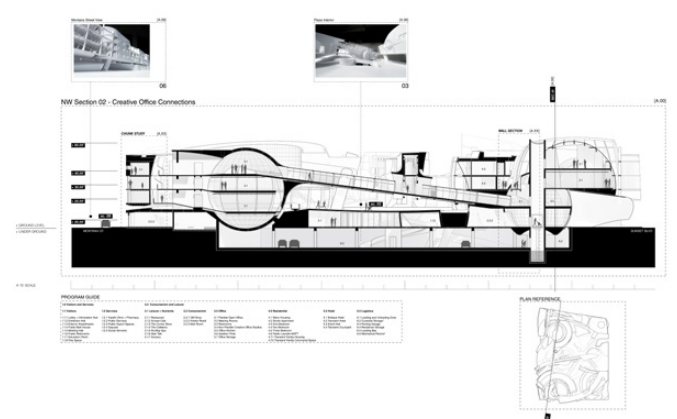
FRAGMENTED NESTING PLAN 03 - SUPPORT MATERIALS PROJECT LOCATION: 1625 SUNSET BLVD, LOS ANGELES, CA DRAWING BY: ELLIOT ROBINSON DATE: 2021.06.06 A.07



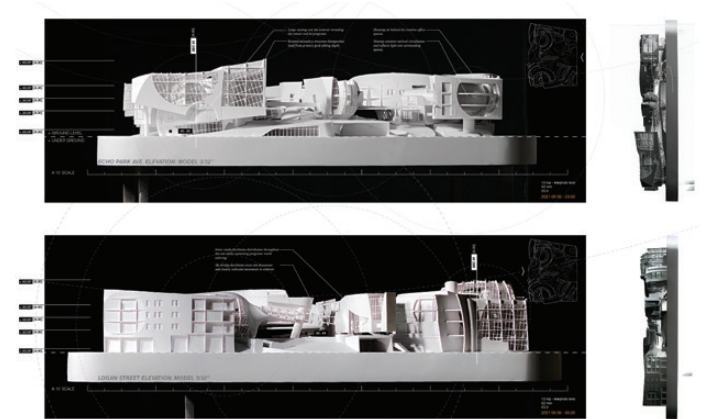
FRAGMENTED NESTING PLAN 04 - SUPPORT MATERIALS PROJECT LOCATION: 1625 SUNSET BLVD, LOS ANGELES, CA DRAWING BY: ELLIOT ROBINSON DATE: 2021.06.06 A.08



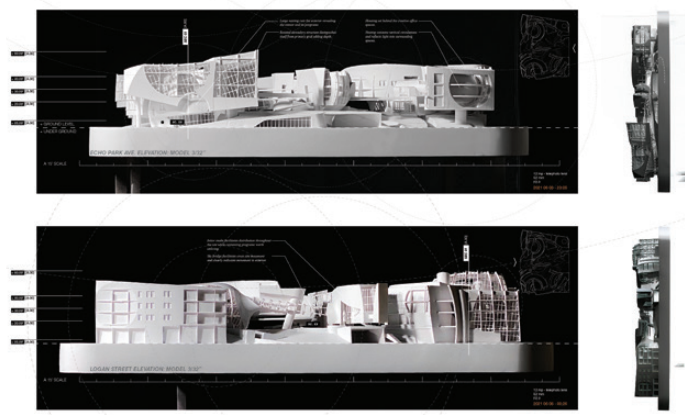
FRAGMENTED NESTING EW SECTION 01 - SUNSET BLVD ADJACENTS PROJECT LOCATION: 1625 SUNSET BLVD, LOS ANGELES, CA DRAWING BY: ELLIOT ROBINSON DATE: 2021.06.06 A.09



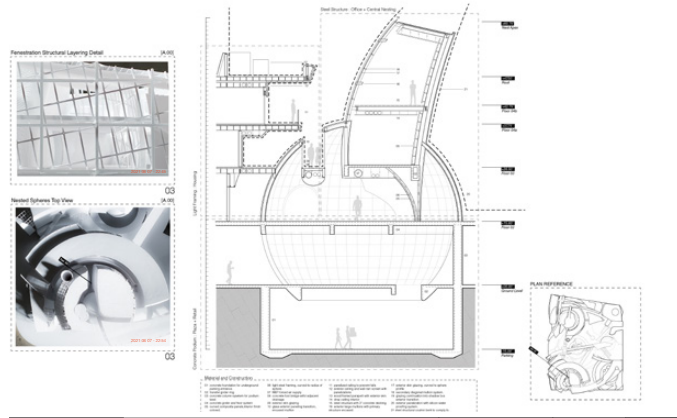
FRAGMENTED NESTING NW SECTION 02 - CREATIVE OFFICE CONNECTORS PROJECT LOCATION: 1625 SUNSET BLVD, LOS ANGELES, CA DRAWING BY: ELLIOT ROBINSON DATE: 2021.06.06 A.10



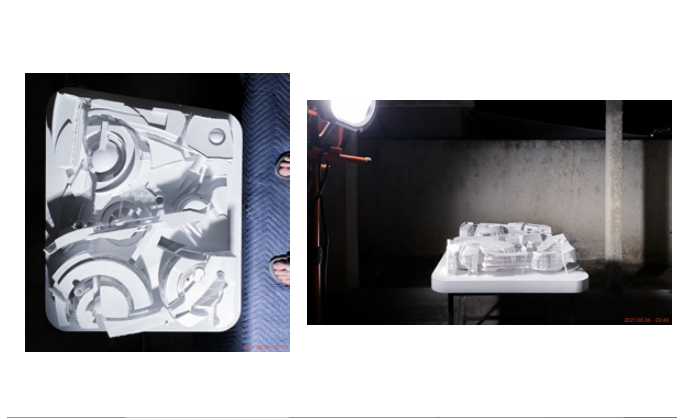
FRAGMENTED NESTING ECHO PARK AVE - LOGAN ST ELEVATIONS PROJECT LOCATION: 1625 SUNSET BLVD, LOS ANGELES, CA DRAWING BY: ELLIOT ROBINSON DATE: 2021.06.06 A.12



FRAGMENTED NESTING ECHO PARK AVE - LOGAN ST ELEVATIONS PROJECT LOCATION: 1625 SUNSET BLVD, LOS ANGELES, CA DRAWING BY: ELLIOT ROBINSON DATE: 2021.06.06 A.12



FRAGMENTED NESTING WALL SECTION - DETAILS PROJECT LOCATION: 1625 SUNSET BLVD, LOS ANGELES, CA DRAWING BY: ELLIOT ROBINSON DATE: 2021.06.06 A.13



FRAGMENTED NESTING MODEL PHOTO ROOF PROJECT LOCATION: 1625 SUNSET BLVD, LOS ANGELES, CA DRAWING BY: ELLIOT ROBINSON DATE: 2021.06.06 A.14



FRAGMENTED NESTING PROJECT TYPE: RESIDENTIAL, COMMERCIAL, OFFICE, FUL, MAX MIXED USE PROJECT LOCATION: 1625 SUNSET BLVD, LOS ANGELES, CA DRAWING BY: ELLIOT ROBINSON DATE: 2021.06.06 A.15